

# roost<sup>TM</sup>


inspired design | alluring | finely crafted | natural



JEWELRY Spring 2016







*We continue to be inspired* by the nuances and transformable aspects of metals and the rich colors and natural intricacies of gems and minerals. In the hands of our skilled artisans and designers, a world of detailed and finely crafted jewelry is created.

While our affinity for brass endures, we are excited to be introducing several new collections in polished bronze, a harder metal with a lovely and radiant rose-gold color. Our Katrina collection pairs bronze and soft, brown leather with astrophyllite, a rare stone graced with metallic flashes, from the Ural Mountains of Russia. The Mila collection marries rosy bronze with sparkling, iridescent quartz drusy, while the Kyanos collection combines bronze and deep-blue kyanite.

With a nod to the holiday season, our new Mystic collection features metal-fused sapphires with a luster and sparkle like none we have seen before. In the Svelte Pavé collection, brilliant, tiny diamonds in simple, modern settings invite everyday wear. Rare imperial topaz crystals harmonize with naturally salmon-colored quartz drusy from Uruguay in our unusual and beautiful Anastasia collection.

Our Anda and Tamalpais collections showcase our love of contrast and texture in jewelry — geometric shapes in brass and wood paired with leather straps and brass fittings create modern variations of tribal necklaces, earrings and hoops. The Talisman pieces augment our popular collections crafted from naturally shed antlers and horsetail tassels. Contemporary, gold-plated monogram tags and geometric post earrings arrive on attractive wood cards, making them ideal for display and gift-giving.

We hope you will find many things you love among the offerings in these pages.

Our best wishes for a fantastic season,

*Your friends at Roost*





## Arta Brass Collection

Red brass, also known as jeweler's brass, is handcut and hammered on both sides to create beautiful, unique texturing in our Arta pieces. A necklace and bracelet have j-hook closures; earrings have gold-plated ear wires. The case pack of stacking rings includes three sets, one set in each size 6, 7 and 8.

Arta Brass		
A	Narrow Cuff	2½" dia x ⅛" w
	J1984	(min 3)
B	Cuff	2½" dia x ⅜" w
	J1983	(min 2)
C	Bracelet	7⅜" l x ½" w
	J1982	(min 2)
D	Choker	16" l
	J1981	(min 2)
E	Stacking Rings S/2	⅛"-¼" w
	J1986	(min 6)
F	Long Earrings	3" l x ¼" w
	J1985	(min 3)

## Sabara Tourmaline Gold-Filled Jewelry

Tourmaline is a semi-precious stone with a complex composition that reveals itself in amazing array of colors. Pink tourmalines are the rarest of colors in the tourmaline family. Deep pink tourmaline crystal beads are accented with slender hand-hammered "tassels" in a pair of 14k gold-filled dangling earrings and long chain necklace. The earrings have gold-filled ear wires; necklace has a lobster clasp closure.

Sabara Tourmaline Gold-Filled Jewelry		
G	Earrings	approx 3⅜" l
	J1987	(min 1)
H	Necklace	pendant: approx 2⅝" l; chain: adjustable 30"-32" l
	J1988	(min 1)









### Silver Shapes Post Earrings

Petite matte sterling silver post earrings in round, rectangle, square and bar shapes are sold as a mixed case pack of the four different styles.

A	Silver Shapes Post Earrings	J2060	(min 4)
	1/8"-1/2" l x 1/8"-3/8" w		



### Mini Hoops in Gold Fill & Sterling Silver

Sweet little shaped hoops come in shiny 14k gold-fill or polished sterling silver. Case pack includes two each of three styles.

	Mini Hoops		
B	Gold-Filled	5/8"-1" l x 3/8"-1/2" w	J2061 (min 6)
C	Sterling Silver	1/2"-3/4" l x 3/8"-1/2" w	J2062 (min 6)

### Veldi Cube Collection

Simple square and cube post earrings are made from sterling silver and embedded with tiny brilliant zircon stones. A sterling cube ring with a single zircon has a matte brass band. Earrings are packed in a mixed case pack of two pairs each of the tiny post styles.

	Veldi Sterling Silver		
D	Post Earrings	1/4" sq, 3/8" sq	J2063 (min 4)
E	Cube Ring	1/4" sq	J2064-6/7/8 (min 1)



contact your local sales representative or fax your order  
to 415 339 9400. visit us online at [roostco.com](http://roostco.com)





### Cast Stacking Collection

We compiled an extensive collection of jewelry pieces that induces an intense craving to wear them in profusion. Our uniquely shaped necklaces, rings and earrings are hand-cast in brass using an ancient lost wax technique and then plated with silver and gold. Three distinct groupings of mixed metal necklaces, some with a smattering of embedded zircons, beg to be layered. A trio of tiny gold or silver-plated zircon necklaces hang from matching chains. All five groupings of necklaces are priced individually and sold in mixed case packs of three different styles.





- A Omega Necklace J2025 pendant:  $\frac{1}{8}$ "– $1\frac{1}{8}$ " w; chain: 16"–28" l (min 3)
- B Alpha Necklace J2026 pendant:  $\frac{1}{8}$ "– $1\frac{3}{4}$ " w; chain: 16"–24" l (min 3)
- C Delta Necklace J2027 pendant:  $\frac{1}{8}$ "– $\frac{7}{8}$ " w; chain: 16"–30" l (min 3)
- Tiny Zircon Necklace
- D Silver J2033 pendant:  $\frac{1}{8}$ "– $\frac{1}{4}$ " w; chain: 16"–18" l (min 6)
- Gold (not shown) J2032 pendant:  $\frac{1}{8}$ "– $\frac{1}{4}$ " w; chain: 16"–18" l (min 6)

#### Stacking Shapes Rings & Tiny Zircon Post Earrings

An assortment of rings was designed in cool shapes and patterns, some with zircon embellishments, to be stacked in multiples. Sold in silver or gold-plated brass, each case pack includes ten different stacking styles; indicate size 6, 7 or 8. Zircon-encrusted silver or gold-plated post earrings are perfect as a pair or worn in unison in multiple piercings.

##### Stacking Shapes Rings

- E Silver  $\frac{1}{8}$ "– $\frac{1}{2}$ " w J2031-6/7/8 (min 10)
- F Gold  $\frac{1}{8}$ "– $\frac{1}{2}$ " w J2030-6/7/8 (min 10)

##### Tiny Zircon Post Earrings

- G Silver  $\frac{1}{4}$ "– $\frac{5}{8}$ " l x  $\frac{1}{8}$ "– $\frac{1}{4}$ " w J2029 (min 6)
- H Gold  $\frac{1}{4}$ "– $\frac{5}{8}$ " l x  $\frac{1}{8}$ "– $\frac{1}{4}$ " w J2028 (min 6)





## Anatolia Collection

Our Anatolia Collection features Faden quartz, which we selected for its unusual crystal structure and distinctive organic shape. Faden is a German word meaning thread, and this mineral derives its name from the white, thread-like inclusions that permeate the clear crystals through a complex process that takes place as each crystal grows. Our warm brass vine-like claw and open-back bezel settings harness the beauty of each uniquely shaped quartz crystal in a statement-making choker and ring. Stone shapes and sizes on these pieces will naturally vary somewhat and each will be unique.

### Anatolia

- A Choker  
pendant: approx 1" l x 1½" w; choker: 5" dia  
J1645 (min 1)
- B Ring  
approx ¾" l x ⅝" w  
J1642-6/7/8 (min 1)

## Mikayla Collection

We love the contrasts in a collection designed with mixed metals and silhouettes. The Mikayla pieces combine sculptural dagger and circlet shapes rendered in warm brass and cool rhodium. A hammered brass dagger pendant is embellished with nine tiny brilliant zircons and hangs from a rhodium-plated brass chain; an unadorned, hammered dagger and loop finish the ends of a rhodium-plated chain lariat. A svelte brass cuff is meant to be worn with the opening in front—the ends are sprinkled with the tiny light-catching zircons. Hammered, unembellished earrings are slender, slightly curved brass daggers on sterling posts. For those who prefer dangling earrings, we offer two styles: rhodium-plated brass hoops with a cascade of swinging chains, and brass daggers embedded with petite zircon stones suspended from brass hoops. A graceful, hammered coil ring is also enhanced with the sparkle of zircons.

### Mikayla Collection

- C Dagger Pendant Necklace  
pendant: 2⅞" l x ⅛" w; chain: 32" l  
J2020 (min 2)
- D Dagger & Loop Lariat  
32" l  
J2019 (min 2)
- E Cuff  
2⅜" dia x ⅛" w  
J2018 (min 2)
- F Dagger Post Earrings  
2⅜" l x ⅛" w  
J2021 (min 2)
- G Loop & Chain Earrings  
2⅞" l x ⅝" w  
J2022 (min 2)
- H Loop & Dagger Earrings  
3" l x ⅞" w  
J2023 (min 2)
- I Coil Ring  
¼" w  
J2017-6/7/8 (min 1)





### Katarina Kyanite Collection

Blissfully blue kyanite from Brazil is cut into graceful rectangular faceted stones and then carefully polished to bring out its brilliant beauty. Open back gold-filled bezels with simple prong settings cradle the stones in earrings, a ring and a pendant necklace with gold-filled chain. A series of faceted, rectangular kyanite beads hang from a 14k gold-filled chain necklace that is ideal for layering with shorter necklaces.

- |   |  |                                   |
|---|--|-----------------------------------|
|   | Katarina Kyanite   |                                   |
| A | Dangle Earrings<br>J2067   | approx 2¼" l x ¼" w<br>(min 1)    |
| B | Post Earrings<br>J2068   | approx ¾" l x ⅛" w<br>(min 2)     |
| C | Pendant Necklace<br>pendant: approx ⅝" l x ¼" w; chain: 18" l<br>J2066 | (min 1)                           |
| D | Chain Necklace<br>J2065  | adjustable up to 18" l<br>(min 1) |
| E | Ring<br>J2069-6/7/8  | approx ¾" sq<br>(min 1)           |

### Barra Post Earrings

Two pairs of sleek post earrings — a long, slender, flat bar and a shorter, wider one — are made of 14k gold-fill. The duo is particularly striking when worn together.

- |   |                     |                        |
|---|---------------------|------------------------|
|   | Barra Post Earrings |                        |
| F | Long<br>J2070       | ⅞" l x ⅛" w<br>(min 1) |
| G | Wide<br>J2071       | 2" l x ⅛" w<br>(min 1) |

### Arta Brass Cuff

A simple, textured brass cuff is ideal for pairing with other bracelets.

- |   |                          |                           |
|---|--------------------------|---------------------------|
| H | Arta Brass Cuff<br>J1983 | 2½" dia x ⅜" w<br>(min 2) |
|---|--------------------------|---------------------------|





NE P  
De Lamont

PHYSIQUE

Nuages





A

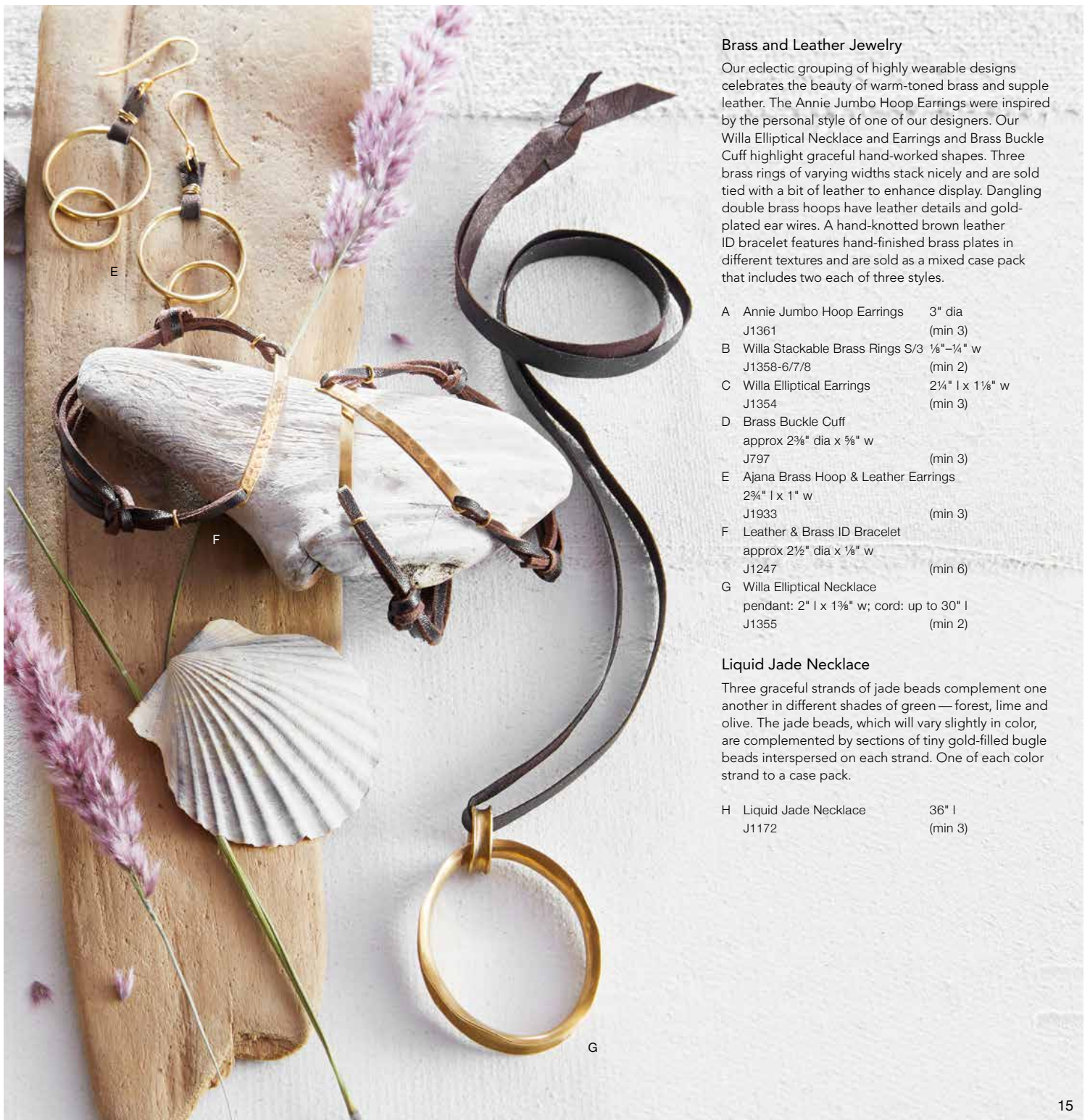
B

C

D

H





## Brass and Leather Jewelry

Our eclectic grouping of highly wearable designs celebrates the beauty of warm-toned brass and supple leather. The Annie Jumbo Hoop Earrings were inspired by the personal style of one of our designers. Our Willa Elliptical Necklace and Earrings and Brass Buckle Cuff highlight graceful hand-worked shapes. Three brass rings of varying widths stack nicely and are sold tied with a bit of leather to enhance display. Dangling double brass hoops have leather details and gold-plated ear wires. A hand-knotted brown leather ID bracelet features hand-finished brass plates in different textures and are sold as a mixed case pack that includes two each of three styles.

- A Annie Jumbo Hoop Earrings     3" dia  
J1361                                     (min 3)
- B Willa Stackable Brass Rings S/3   1/8"-3/4" w  
J1358-6/7/8                             (min 2)
- C Willa Elliptical Earrings         2 1/4" l x 1 1/8" w  
J1354                                     (min 3)
- D Brass Buckle Cuff  
approx 2 3/8" dia x 5/8" w  
J797                                         (min 3)
- E Ajana Brass Hoop & Leather Earrings  
2 3/4" l x 1" w  
J1933                                         (min 3)
- F Leather & Brass ID Bracelet  
approx 2 1/2" dia x 1/8" w  
J1247                                         (min 6)
- G Willa Elliptical Necklace  
pendant: 2" l x 1 3/8" w; cord: up to 30" l  
J1355                                         (min 2)

## Liquid Jade Necklace

Three graceful strands of jade beads complement one another in different shades of green—forest, lime and olive. The jade beads, which will vary slightly in color, are complemented by sections of tiny gold-filled bugle beads interspersed on each strand. One of each color strand to a case pack.

- H Liquid Jade Necklace             36" l  
J1172                                         (min 3)





H

B

C

A





## Anora Collection

Our lovely Anora Collection combines an array of soft-hued stones with subtle 14k gold-filled metal accents. Tiny multi-colored sapphire beads are strung on silk thread with gold-filled faceted beads and slender dangling "feathers" and then interspersed with lengths of gold-filled chain on a long necklace and a matching beaded bracelet. Rare pink tourmaline crystals have color gradations that are highlighted with a gold-filled band set onto a post earring. Carefully hand-selected pink kunzite crystals range from soft pink to slightly violet-toned. The unpolished, organically-shaped stones are set into gold-filled claw bezel settings on a ring, a pair of drop earrings and two necklaces. One necklace features a vertical stone hanging from a long gold-filled chain, the other features a long horizontal stone suspended from a delicate short chain; both with lobster clasp closures. Please indicate ring size 6, 7 or 8.

### Anora Collection

- |   |                             |  |
|---|-----------------------------|--|
| A | Tiny Sapphire Necklace      | 32" l                                      |
|   | J2011                       | (min 1)                                    |
| B | Tiny Sapphire Bracelet      | adjustable 6½"-7½" l                       |
|   | J2010                       | (min 1)                                    |
| C | Tourmaline Crystal Earrings |  |
|   |                             | approx ¾" l x ¼" w                         |
|   | J2009                       | (min 1)                                    |
| D | Kunzite Ring                | approx ¾"-1" l x ⅝"-⅞" w                   |
|   | J2005-6/7/8                 | (min 1)                                    |
| E | Kunzite Pendant Necklace    |  |
|   |                             | pendant: approx 1½" l x ⅞" w; chain: 30" l |
|   | J2006                       | (min 1)                                    |
| F | Kunzite Bar Necklace        |  |
|   |                             | pendant: approx ⅝" l x 1⅞" w; chain: 17" l |
|   | J2007                       | (min 1)                                    |
| G | Kunzite Earrings            | approx 1¼" l x ¼" w                        |
|   | J2008                       | (min 1)                                    |

## Braided Brass Bangle & Ring

A partially braided brass bangle and ring are pretty accompaniments to the other pieces in the collection. Ring case pack includes two each of sizes 6, 7 and 8.

### Braided Brass

- |   |        |                |
|---|--------|----------------|
| H | Bangle | 2½" dia x ⅛" w |
|   | J2003  | (min 3)        |
| I | Ring   | ⅛" w           |
|   | J2004  | (min 6)        |



### Aurora Crystal Collection

Our shimmering collection of slender quartz crystal jewelry is reminiscent of the aurora borealis, a magical, colorful display of light in the northern sky. The aurora borealis is caused by the reaction of charged particles with the atmosphere. Similarly, our distinctive naturally formed quartz crystals are charged in the presence of precious metal molecules to produce lovely iridescent colored stones. Quartz fused with indium yields beautiful prismatic lavender-blue stones; white stones are fused with gold and silver for a beautiful milky shimmer. The fused finishes are durable and should not wear or fade over time with normal use. These special crystals are joined with gleaming brass with hand-crafted details. A pair of earrings and a pendant necklace marry a luminous ladder of crystals with dangling half-moon-shaped polished brass pieces. A single iridescent stone is the focal point of a flat-banded ring with an unusual latch-like setting. Ear wires on earrings are gold-plated brass.

#### Aurora Crystal

A	Earrings Lavender	approx 2 $\frac{1}{8}$ " l x $\frac{7}{8}$ " w	J1621	(min 1)
	Earrings White (not shown)		J1619	(min 1)
		approx 2 $\frac{1}{8}$ " l x $\frac{7}{8}$ " w		
B	Necklace White		J1622	(min 1)
	pendant: approx 1 $\frac{7}{8}$ " l x 1 $\frac{1}{8}$ " w; chain: adjustable 30"-32" l			
	Necklace Lavender (not shown)		J1624	(min 1)
	pendant: approx 1 $\frac{7}{8}$ " l x 1 $\frac{1}{8}$ " w; chain: adjustable 30"-32" l			
	Rings (please indicate size 6, 7 or 8)			
C	Lavender	approx $\frac{3}{4}$ "- $\frac{7}{8}$ " w	J1617-6/7/8	(min 1)
D	White	approx $\frac{3}{4}$ "- $\frac{7}{8}$ " w	J1615-6/7/8	(min 1)

### Luna Long Chain Necklace & Double Earrings

Our Luna collection is handmade from polished brass discs artfully folded to resemble shining half-moons. A 40" long chain intersperses half-moons of different sizes with lengths of delicate brass chain. A pair of half-moons swings freely on earrings with gold-plated brass ear wires.

#### Luna

E	Long Chain Necklace 40" l		J1625	(min 2)
F	Double Earrings	1 $\frac{7}{8}$ " l x 1 $\frac{1}{8}$ " w	J1627	(min 3)





### Theia Crystal Cuff

Dazzling solar quartz, which can resemble a sun or starburst, is a type of agatized quartz that is sliced from stalactites — ringed columns of minerals that form over thousands of years. A large stalactite slice in a claw setting makes a brilliant centerpiece for a shiny front latch brass cuff.

G Theia Crystal Cuff     J1612     (min 1)  
approx 2¾" dia x 1½" w

F

G

E



## Figur Earrings in Gold Fill & Sterling Silver

Our Figur collection of "hoop" style earrings is fashioned by hand into cool, figural shapes from hammered wire. Each pair is eye-catching, lightweight and fun to wear. 14k gold-filled wire is bent into twist, loop and swirl shapes. Mixed metal earrings have gold-fill wire bent into unusual geometric oval, angle and round shapes with carefully soldered sterling silver centers and ear wires. Diamond, hexagon and "Big G" shape hoops are formed from sterling silver wire.

Figur	
A Twist Hoops J2054	3" l x 3/4" w (min 2)
B Loop Hoops Large J2052	2 5/8" l x 1 1/2" w (min 2)
C Loop Hoops Small J2051	2 1/8" l x 7/8" w (min 2)
D Swirl Hoops J2053	2 1/2" l x 1 3/4" l (min 2)
E Gold & Silver Oval Earrings J2050	2 3/4" l x 1 1/4" w (min 2)
F Gold & Silver Angle Earrings J2057	2 5/8" l x 1" w (min 2)
G Gold & Silver Round Earrings J2058	2 3/8" l x 2" w (min 2)
H Big G Hoops J2055	2" dia (min 3)
I Hex Hoops J2059	2" dia (min 3)
J Diamond Hoops J2056	2 1/4" x 1 5/8" w (min 3)







H



F



G







A

B

C

D



## Estrella Turquoise Collection

The Estrella Turquoise Collection features polished pieces of natural Arizona turquoise in a range of shades from cyan to blue-green set into hand-worked brass wire claw settings. Single stones grace a latch bracelet, ring, pendant necklace and post earrings. Dangling earrings have double stones, while the droplet necklace has a waterfall of seven stones. Distinctive brass hoops in two sizes carry multiple oval turquoise beads. Necklaces have brass chains and lobster clasp closures. Post earrings have sterling silver posts; dangle earrings have gold-plated brass ear wires. A complementary long necklace combines polished turquoise nuggets and lengths of brass chain with a lobster clasp closure. Please indicate ring size 6, 7 or 8.

### Estrella Turquoise

A Latch Bracelet J1994	2½" dia x ¾" w (min 2)
B Ring J1997-6/7/8	approx. ¾" l x ½" w (min 2)
C Dangle Earrings J1998	approx 1¾" l x ½" w (min 2)
D Post Earrings J1999	approx ½" l x ¾" w (min 3)
E Pendant Necklace pendant: approx ¾" x ¾" w chain: adjustable 16"-18" l J1993	(min 2)
F Droplet Necklace J2000	adjustable 16"-18" l (min 1)
G Hoops Large J2002	1¾" dia x 2¼" l (min 2)
H Hoops Small J2001	1½" dia x 1¾" l (min 2)
I Bead Chain Necklace J1992	36" l (min 2)

## Star Pendant Necklace & Earrings

A primitive star shape is hand-worked in brass on a brass chain pendant necklace with lobster clasp closure. Matching earrings feature petite turquoise stones set above a half star shape dangling from gold-plated brass ear wires.

### Star

J Pendant Necklace pendant: 1" l x ¾" w; chain: adjustable 18"-20" l J1996	(min 3)
K Turquoise Earrings J1995	approx 1¾" l x ¾" w (min 3)

contact your local sales representative  
or fax your order to 415 339 9400.  
visit us online at [roostco.com](http://roostco.com)







## Albion Collection

Our architectural Albion collection will add panache to an outfit and is a must for a resort vacation wardrobe. The marble-like mineral Howlite was first discovered in Nova Scotia and is named after the mineralogist explorer who discovered it. Subtle grey veining intersects the creamy white surface of these stones. Faceted Howlite beads and a brass feather detail adorn a brass chain on a brass loop lariat. Smooth cabochon stones are set in polished brass on a front-opening cuff and pendant necklace with lobster clasp.

- Albion
- A Lariat 32" l  
J2072 (min 2)
- B Necklace  
pendant:  $\frac{7}{8}$ " l x  $2\frac{3}{4}$ " w; chain: adjustable up to 20" l  
J1956 (min 2)
- C Cuff approx  $2\frac{3}{8}$ " dia x  $1\frac{1}{4}$ " w  
J1955 (min 2)

## Brass Quill Earrings

Porcupine quills are reimagined in sleek, polished brass. Brass Quill earrings have gold-plated brass ear wires.

- D Brass Quill Earrings  $3\frac{1}{2}$ " l x  $\frac{1}{8}$ " w  
J2024 (min 3)

## Herkimer & Brass Collection

Naturally brilliant and smooth Herkimer "diamonds" are natural quartz crystals that are named after the location in upstate New York where they were first found. These stunning crystals have beautiful clarity and two naturally "faceted" ends — a rare crystal form known as double-termination. Tiny Herkimers nestled in hammered brass wire settings are reminiscent of peapods and are offered in a necklace with brass chain and dangling earrings. A chain necklace features tiny natural Herkimer crystals strung on delicate flat brass cable chain with a lobster clasp.

- Herkimer Peapod
- E Necklace  
pendant: approx  $1\frac{7}{8}$ " l x  $\frac{1}{4}$ " w; chain: 24" l  
J1419 (min 3)
- F Earrings approx  $2\frac{1}{2}$ " l x  $\frac{1}{4}$ " w  
J1417 (min 2)
- G Herkimer Chain Necklace  
36" l  
J1572 (min 1)

## Birdcage Necklace

Our captivating Birdcage Necklace has a latched brass cage that carries a sparkling, loose apophyllite crystal specimen suspended on a long, delicate brass chain.

- H Birdcage Necklace  
pendant: approx  $1\frac{3}{8}$ " l x  $\frac{7}{8}$ " dia; chain: 28" l  
J1432 (min 2)







A

E

B

C

H

I

J





## Mila Blue Drusy Collection

Brilliant blue quartz drusies owe their intense color and iridescence to a durable titanium finish that is fused to the stones. The round-cut stones are set into bronze bezels in two sizes of pendant necklaces with bronze chains and a pair of post earrings with sterling silver posts. Stacked rings of polished bronze are decoratively banded into a single ring with an offset drusy; please indicate ring size 6, 7 or 8.

### Mila Blue Drusy

- |   |                        |   |
|---|------------------------|---|
| A | Pendant Necklace Large | pendant: $\frac{3}{4}$ " dia; chain: adjustable up to 18" l |
|   | J1919                  | (min 2)   |
| B | Pendant Necklace Small | pendant: $\frac{3}{8}$ " dia; chain: adjustable 16"-18" l   |
|   | J2036                  | (min 2)   |
| C | Post Earrings          | $\frac{3}{8}$ " dia   |
|   | J1920                  | (min 3)   |
| D | Ring                   | $\frac{3}{8}$ " w   |
|   | J1921-6/7/8            | (min 2)   |

## Sigri Bronze Cuff & Ring

Authentic bronze is an amalgam of copper and tin that resembles the appealing coloration of rose gold. A slim yet shapely hammered cuff is lovely on the wrist. A bronze stacked ring has five connected rounded bands; please indicate ring size 6, 7 or 8.

### Sigri Bronze

- |   |             |                              |
|---|-------------|------------------------------|
| E | Cuff        | 2 $\frac{3}{8}$ " dia x 2" w |
|   | J1889       | (min 1)                      |
| F | Ring        | $\frac{3}{8}$ " w            |
|   | J1884-6/7/8 | (min 3)                      |

## Hammered Bronze Collection

Subtle hammering lends extra appeal to the designs of our polished raw bronze pieces. Textured latch bangles are pretty as a trio or one at a time. A case pack of six bangles includes two each of three styles. Pair elegant hammered post earrings or the striking Rectangle and Angle earrings with any of our bronze jewelry pieces for serious panache. Post earrings have sterling silver posts; four styles of earrings are packed one of each to a case pack.

### Hammered Bronze

- |   |                    |  |
|---|--------------------|--|
| G | Latch Bangles      | 2 $\frac{1}{2}$ " dia x $\frac{1}{8}$ " w              |
|   | J2034              | (min 6)  |
| H | Post Earrings      | $\frac{3}{8}$ " l x $\frac{1}{8}$ "- $\frac{3}{8}$ " w |
|   | J2035              | (min 4)  |
| I | Angle Earrings     | 2 $\frac{1}{2}$ " l x 1 $\frac{1}{8}$ " w              |
|   | J1927              | (min 2)  |
| J | Rectangle Earrings | 2" l x 1 $\frac{1}{8}$ " w                             |
|   | J1926              | (min 2)  |



## Juna Bracelets & Necklace

Created by a clothing designer, this collection combines soft ivory cotton and brass-toned metal elements in a highly wearable collection of necklaces and bracelets. Bracelets in three widths provide perfect opportunities for layering; a necklace can be worn extra long and layered or easily doubled up.

### Juna Bracelets

A	Wide	7½" l
	J1894	(min 3)
B	Medium	adjustable 7"-7½" l
	J1893	(min 3)
C	Thin	adjustable 7"-7½" l
	J1892	(min 3)
D	Juna Necklace	57" l
	J1890	(min 3)

## Brass Crescent Earrings & Sottile Brass Cuff

Lovely crescent-shaped brass sheet discs are satin-finished and hand-stamped on both sides with subtle dotted rays. A slender and graceful brass cuff is organically shaped and satin-finished.

E	Brass Crescent Earrings	1½" l x 1½" w
	J1895	(min 3)
F	Sottile Brass Cuff	approx 2½" dia x ¼" w
	J1246	(min 3)

## Knotted and Brass Disc Necklaces

An array of necklaces in different lengths all layer ideally with other pieces. Brass discs with an ancient coin pattern dangle as a bib on knotted blue cotton and tiny faceted brass beads. Longer hand-sculpted gold plated copper bead necklaces are knotted with blue or gray cotton thread and finished with lobster clasps for doubling the strands. An extra long ivory knotted necklace is strung with delicately textured brass beads. A long brass chain necklace is interspersed with unembellished brass discs for a modern look.

### Knotted Necklaces

G	Coin Bib	18" l
	J1899	(min 2)
H	Blue Cord Beaded	32" l
	J1897	(min 2)
I	Gray Cord Beaded	32" l
	J1898	(min 2)
J	Textured Bead	82" l
	J1891	(min 2)
K	Brass Disc Chain Necklace	37" l
	J1896	(min 3)





D

C

B

I

J

K



### Karana Etched Brass Cuff & Gold Dholki Earrings

Each gently curved golden brass cuff is carefully etched by hand with a special hammering technique that yields a modern tribal pattern. The exterior of the cuff has a matte finish, while the inside is polished to a high shine. Traditional diamond-shaped dholki beads are molded in wax, cast in sterling silver and then plated with 22k gold in a pair of dangling earrings with gold-plated ear wires.

A	Karana Etched Brass Cuff J1989	2½" dia x 1¼" w (min 1)
B	Gold Dholki Earrings J1990	1½" l x ½" w (min 2)

### Tulum Turquoise Collection

Beautiful blue-green turquoise is accented by a "spider web" of natural black matrix. A bracelet features varied sizes of oval turquoise cabochons that are bezel-set in brass and connected by lovely bead-detailed brass connectors; adjustable with a lobster clasp. A ring with an oval stone has a deep brass bezel and patterned band. Complementary drop earrings have turquoise ovals set into tiny beaded hoops and gold-plated ear wires.

	Tulum Turquoise	
C	Ring J1790-6/7/8	½" l x ¾" w (min 1)
D	Bracelet adjustable 7"-8" l x 1" w J1789	(min 1)
E	Earrings J1791	1½" l x ½" w (min 3)

### Tulum Ring

A stylish, long brass ring is engraved with a Mayan sun motif for a modern ethnic vibe. Adjustable.

F	Tulum Ring Brass J1547	1¾" l x ¾" w (min 6)
---	---------------------------	-------------------------



### Turquoise Bead Collection

Tiny turquoise beads alternate with brass links on a delicate necklace that carries a flower-stamped medallion. Strands of Afghan turquoise beads are beaded in over-the-head necklaces, sold in a mixed case pack of these styles. Handcut turquoise cushion beads are interspersed with rice-shaped brass beads on a long bead strand necklace. Colors of turquoise beads will vary.

- G Afghan Turquoise Bead Strand 30" l  
J1096 (min 3)
- H Turquoise Bead & Brass Pendant Necklace  
pendant: 1" l x ¾" w; chain: 20" l  
J1095 (min 1)
- I Turquoise & Brass Bead Necklace  
42" l  
J1717 (min 1)





### Marguerite Baroque Pearl Collection

Baroque pearls take up to six years to form inside an oyster, with a pearl developing more of its coveted luster over time. The highly wearable Marguerite Baroque Pearl Collection is made with creamy white cultured baroque pearls that are carefully selected for their unusual, irregular shape and radiant sheen. We combine the pearls with warm-toned, high-copper brass. A lissome lariat necklace flaunts a large lustrous pearl. Single pearls are suspended from small brass hoops in unique post earrings. Dangle earrings feature a pearl suspended from tiny intertwined links with gold-plated brass ear wires.

#### Marguerite Baroque Pearl

A Lariat	32" l	J1306	(min 1)
B Froth Earrings	approx 1½" l x ¾" w	J1298	(min 2)
C Post Earrings	approx 1" l x ¾" w	J1299	(min 2)

### Brass Circles Post Earrings

Simple handmade circles in polished brass make sweet earrings with sterling silver posts. A mixed case pack includes two pairs each of three styles.

D Brass Circles Post Earrings		J2013	(min 6)
	¼"–¾" dia		

### Freshwater Pearl Collection

Beautiful pearls are endlessly beguiling and occasion an eclectic collection of forms. A ring and cuff fashioned from a pair of freshwater pearls on polished brass wire easily adjust to fit. A strand of delicate tiny pearls is hand-knotted on brown silk cord with a button closure and can be worn single or doubled. A matching tassel-tipped bracelet of rice pearls adjusts to fit most wrists. A leather bolo with simple brass beads and a pearl on each end is perfect for layering with shorter necklaces.

#### Freshwater Double Pearl

E Ring	¼" w; adjustable	J2015	(min 3)
F Cuff	¾" w	J2014	(min 2)

#### Knotted Tiny Pearl

G Necklace	32" l	J1105	(min 2)
H Bracelet	adjustable: 6"–8" l	J1100	(min 4)
I Freshwater Pearl Bolo	adjustable up to 34" l	J2016	(min 2)



## Baroque Pearl Drop Necklace

A solitary baroque pearl hangs from a thin brown leather cord with simple brass bead details.

J Baroque Pearl Drop Necklace      J2012      (min 2)  
pendant: approx ¾" l x ½" w; cord: up to 32" l







## Indra Collection

A bib necklace with four layers of dangling silver-finished beads and brown cotton strap has a distinctly tribal feel. Beautiful ladder-style cast-iron beads with silver or dark nickel finishes are strung on elastic to create striking stretch bracelets.

	Indra	
A	Bib Necklace Silver J1775	adjustable 17"-20" l (min 4)
	Bracelet	
B	Dark Nickel J1777	2 1/8" dia x 1/2" w (min 8)
	Silver (not shown) J1776	2 1/8" dia x 1/2" w (min 8)

## Aurora Knotted Bead Necklace

A bevy of beads made of silver-plated metal and glass is delicately knotted by hand to create this striking necklace. Can be worn singly or doubled.

C	Aurora Knotted Bead Necklace Antique Silver J599	36" l (min 3)
---	---	------------------

## Hammered Silver Earrings

Flat disks of brass are shaped into rounds and petals, hammered and dipped in silver, creating wafer-light earrings suspended from delicate silver wires.

	Hammered Silver Earrings	
D	Leaf J851	2 1/4" l x 1" w (min 4)
E	Round J850	1 1/4" dia x 1 7/8" l (min 4)

## Isha & Maya Bracelets & Cuffs

	Isha Wide Bracelets	
F	Silver J595	2 1/8" dia x 1 1/2" w (min 4)
G	Dark Nickel J596	2 1/8" dia x 1 1/2" w (min 4)
	Isha Narrow Bracelets	
H	Silver J1864	2 1/4" dia x 3/4" w (min 6)
I	Dark Nickel J1863	2 1/4" dia x 3/4" w (min 6)
	Maya Large Bead Bracelets	
J	Silver J1866	2 1/8" dia x 3/8" w (min 6)
K	Dark Nickel J1865	2 1/8" dia x 3/8" w (min 6)
	Maya Mini Square Bead Cuffs	
L	Silver J589	2 3/4" dia x 1 3/4" w (min 4)
M	Dark Nickel J590	2 3/4" dia x 1 3/4" w (min 4)







F

B

K

M

G

I

J

H

L

### Isha & Maya Bracelets & Cuffs

Our close-fitting and comfortable Isha Bracelets are fashioned by hand from metal strung on elastic. Two widths of bracelets, with polished or dark nickel finishes, fit all wrists. Our Maya Collection features cuffs handmade from tiny metal beads strung on wire, and larger metal bead bracelets strung on elastic cord; both styles in silver and dark nickel finishes.





## Geometric Silver Collection

Cotton and cool silver metal combine to create two remarkable necklaces. Silver-plated disks folded over ivory cording form our three-strand Half Moon Necklace. Irregular silver-plated metal beads strung on multiple ivory threads flow together for a liquid look in our Multi-Strand Bead Necklace. A beautiful strand of interlocking silver-plated brass rings has a light-catching hammered finish that brings complexity to the clean design of a chain necklace and bracelet. Silver Squares Bracelets feature hollowed squares of silver-plated metal nestled together with an elastic band; case pack includes two each of three styles. Silver-plated brass earrings in irregular rectangle or detailed bar shapes slide seamlessly into the collection.

- A Half Moon Necklace Silver  
28" l  
J719 (min 2)
- B Multi-Strand Bead Necklace Silver  
adjustable 19"-22" l  
J801 (min 3)
- C Hammered Silver Chain Necklace  
54" l  
J414 (min 2)
- D Hammered Silver Chain Bracelet  
7½" l  
J413 (min 4)
- E Squares Bracelet Silver  
2½" dia x ¼" w, 2½" dia x ⅜" w  
J717 (min 6)
- F Geometric Silver Rectangle Earrings  
3¼" l x ⅜" w  
J1014 (min 2)
- G Bar Earrings Silver 3¼" l  
J732 (min 6)

## Olympia Gray Pearl Necklace & Earrings

Silvery gray pearls are a perfect complement to bright silver-plated brass in our Olympia Gray Pearl Necklace and Earrings. Hand-hammered hoops of varying sizes are interspersed with baroque gray pearls to create a long link chain necklace. The earrings have single pearls suspended from hoops on silver-plated brass ear wires.

- Olympia Gray Pearl  
H Necklace 41" l  
J1481 (min 2)
- I Earrings approx 1⅞" l x ⅜" w  
J1479 (min 3)







## Talisman Collection

Our handsome, adjustable Talisman Antler Necklace is made from the tip of a naturally shed antler set in brass. The necklace, with layered chains, may be worn long or doubled with the over-sized j-hook closure on the front. Inspired by our popular Challie jewelry, we created a grouping of necklaces and earrings made with horsetail tassels and brass findings. The horse hair is culled from horse tails that require frequent clipping, washed and paired with brass ring and coil details in two colors of pendant necklaces and matching earrings. Detailed feathers carved from bone are set in a pendant necklace and earrings. Ear wires on horsetail and bone feather earrings are gold-plated brass.

### B Talisman Antler Necklace

pendant: 4" l x  $\frac{7}{8}$ " w; chain: 36" l  
J1976 (min 1)

### Horsetail Earrings

C White approx 2 $\frac{3}{8}$ " l x  $\frac{1}{2}$ " w  
J1973 (min 3)

D Black approx 2 $\frac{3}{8}$ " l x  $\frac{1}{2}$ " w  
J1972 (min 3)

### Horsetail Pendant Necklaces

E White  
pendant: approx 4 $\frac{1}{2}$ " l x  $\frac{7}{8}$ " w  
chain: adjustable up to 32" l  
J1975 (min 2)

F Black  
pendant: approx 4 $\frac{1}{2}$ " l x  $\frac{7}{8}$ " w  
chain: adjustable up to 32" l  
J1974 (min 2)

G Feather Earrings 2 $\frac{7}{8}$ " l x  $\frac{3}{8}$ " w  
J1970 (min 3)

H Feather Necklace  
pendant: approx 2 $\frac{1}{4}$ " l x  $\frac{3}{8}$ " w  
chain: adjustable 24"-26" l  
J1971 (min 3)

## Golden Rutile Knotted Necklaces

Lengths of knotted chocolate brown silk cord are strung with golden rutile quartz rondelles and have button closures.

Golden Rutile Knotted Necklaces  
34" l

I Small J1430 (min 1)

J Large J1431 (min 1)

## Burnished Brass Pivot Earrings

Sculptural brass feathers hang from hinged hoop earrings.

K Burnished Brass Pivot Earrings 2" l x  $\frac{7}{8}$ " w  
J887 (min 4)





## Antler Necklace

Deer antlers have a long history of use in decorative arts, and their popularity and abundance benefit from deer naturally shedding their antlers each year. Our Antler Necklace encircles a small antler tip, handcut and shaped by a master craftsman from gathered naturally shed antlers, with a brass ring setting on a brass chain.

A Antler Necklace  
pendant: approx 2½" l x ½" w  
chain: 34" l  
J1578 (min 2)





## Challie Collection

We expanded the Challie Collection and added equine accents such as leather and horse hair to create a stable of bracelets, earrings, necklace and a keychain. Miniature brass horse bits form links in our popular bracelet. A matching necklace suspends a run of brass bits from a long black leather strap; brass shaped to resemble graceful horseshoes dangles from bits on earrings with gold-plated brass ear wires. Round figure eight links with the tiniest medallion detail on both sides are joined with smooth brass rings in a bracelet with j-hook closure; a third bracelet has elongated rectangular links. Horse hair is culled from horse tails that require frequent clipping, washed and fashioned into a miniature horse tail with brass ring and secure clip.

### Challie

B	Horseshoe Earrings	2½" l x 1¾" w
	J1594	(min 3)
C	Necklace	36" l
	J1596	(min 2)
D	Equestrian Bracelet	
	adjustable 6¾"-7½" l	
	J1543	(min 3)
E	Round Link Bracelet	adjustable up to 7¾" l
	J1595	(min 3)
F	Horsetail Key Ring	6" l x 1" w
	J1597	(min 2)
G	Rectangular Link Bracelet	
	adjustable 6½"-7½" l	
	J1544	(min 3)

## Quill Collection & Onyx Ring

Porcupine quills are one of nature's fascinating oddities. Their beautiful colorations and hard surface coating make the quills ideal for use in jewelry. Quills that are naturally shed by porcupines are washed and cut, then combined with brass fittings. Our long necklace has quills that are interspersed with lengths of brass chain; pairs of earrings with short or long quills have brass caps and gold-plated brass ear wires. A polished crescent of shiny black onyx is flush set into a smooth brass band on a complementary ring. Please indicate ring size.

### Quill

H	Short Earrings	2" l x 1⅝" w
	J1680	(min 3)
I	Long Earrings	3½" l x 1⅝" w
	J1681	(min 3)
J	Necklace	44" l
	J1682	(min 2)
K	Black Onyx & Brass Ring	¾" w
	J1579-6/7/8	(min 1)



## Caillie Collection

Echoing the shapes of waves, undulations and ripples in moving water, our Caillie Collection is hand-formed from brass with an antique finish. The Caillie Circles Bracelet features conjoined circles offset with three randomly placed chalcedony stones; matching hoops have dangling chalcedony stones. A petite chalcedony in a brass bezel is offset so that it rests on a brass chain necklace. Concentric ripples are crafted from brass in a pair of stylish earrings. Two widths of cuffs mimic waveforms.

### Caillie

A	Necklace J1831	22" l (min 2)
B	Wave Cuff Small J1822	2½" dia x ½" w (min 2)
C	Wave Cuff Large J1824	2½" dia x 1¾" w (min 2)
D	Ripple Earrings J1819	approx 2¾" l x 1½" w (min 2)

### Caillie Circles

E	Bracelet J1814	7½" l x 1½" w (min 2)
F	Hoop J1815	1¾" dia x 2½" l (min 2)

## Bolinas Agate Ring

A moody, dark agate is set in an antique brass on our Bolinas Agate Ring. See pages 78–79 for other pieces from this collection. The natural agates in each ring will vary in color from black to brown to cream tones.

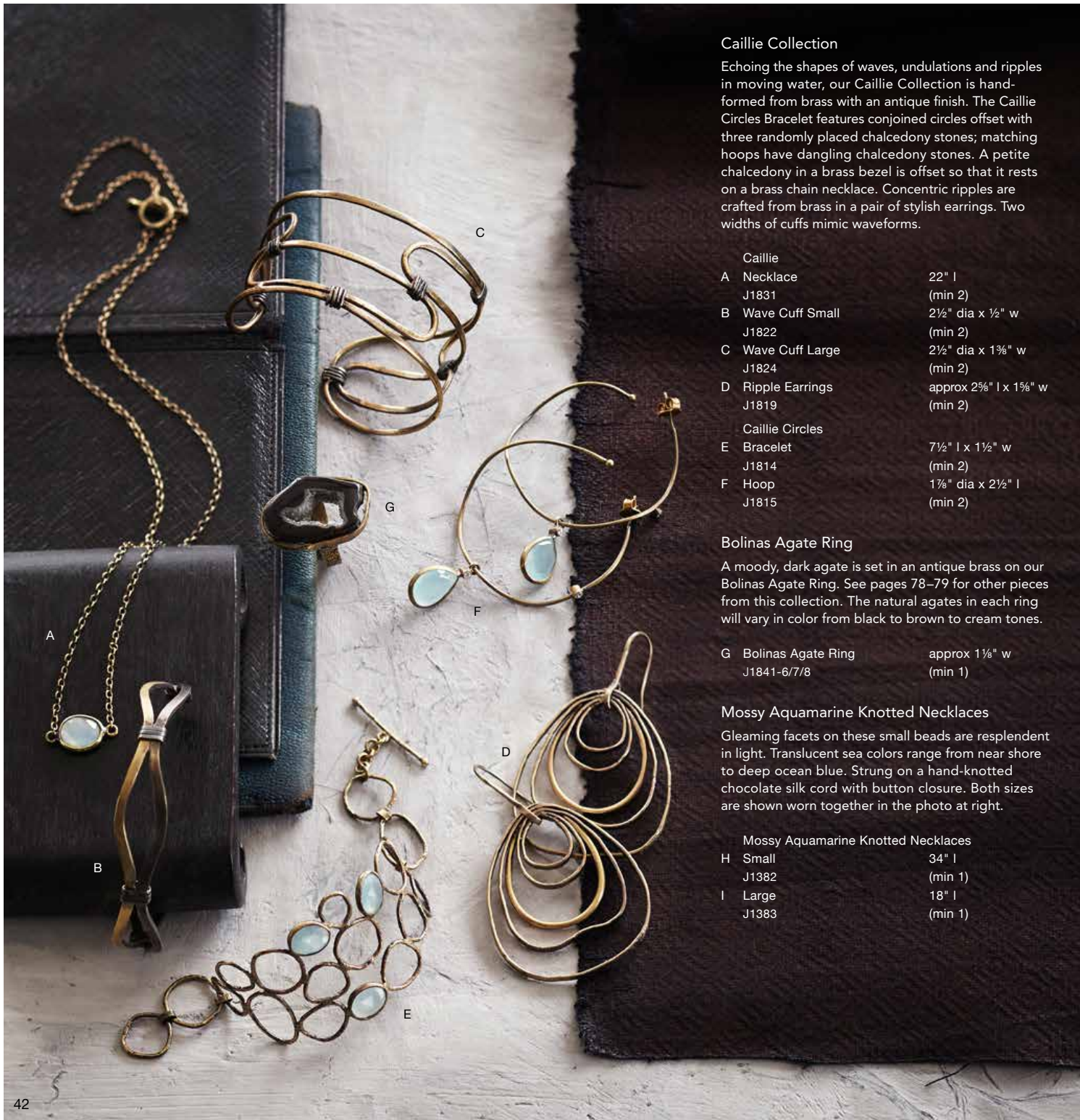
G	Bolinas Agate Ring J1841-6/7/8	approx 1½" w (min 1)
---	-----------------------------------	-------------------------

## Mossy Aquamarine Knotted Necklaces

Gleaming facets on these small beads are resplendent in light. Translucent sea colors range from near shore to deep ocean blue. Strung on a hand-knotted chocolate silk cord with button closure. Both sizes are shown worn together in the photo at right.

### Mossy Aquamarine Knotted Necklaces

H	Small J1382	34" l (min 1)
I	Large J1383	18" l (min 1)







G

I

H







### Herkimer Crystal Collection

Sparkling quartz crystals, also known as Herkimer Diamonds, have naturally beautiful facets and exceptional clarity. Our eclectic Herkimer Crystal Collection shows off these magical stones in a variety of unusual ways. A single brilliant stone is the centerpiece of a delicate bangle. Myriad sizes of Herkimer stones are knotted on gray silk cord with a button closure on a long necklace. A diminutive glass vial is filled with tiny Herkimer Diamonds and adorned with a hand-ground amethyst crystal bottle stopper and a brass chain. A pair of lariats mixes Herkimers with crystal points — one loops the lariat through a small geode slice while the other loops through a brass clip.

#### Herkimer Crystal

C Bangle	approx 2 $\frac{3}{8}$ " dia x $\frac{3}{8}$ " w	J1853	(min 4)
D Knotted Necklace	36" l	J1858	(min 1)
E Vial Necklace		J1484	(min 2)
	pendant: approx 1 $\frac{1}{8}$ " l x $\frac{1}{2}$ " w; chain: 25" l		
F Tiny Geode Slice Lariat		J1856	(min 2)
	approx 30"–31" l		
G Clip Lariat	approx 34" l	J1857	(min 2)

### Herkimer & Drusy Collection

Solitary Herkimers in simple brass claw settings are offset by lovely Uruguayan amethyst drusies in an open-front, adjustable brass cuff and ring.

#### Herkimer & Drusy

H Cuff	approx 2 $\frac{1}{2}$ " dia x 1 $\frac{1}{4}$ " w	J1854	(min 1)
I Ring	approx $\frac{1}{2}$ " w; adjustable	J1855	(min 2)





## Marcella Collection

### Marcella

A	Post Earrings	approx 1 $\frac{1}{8}$ " l x $\frac{1}{4}$ " w	J1795	(min 3)
B	Cluster Pendant Necklace	pendant: approx 2" l x $\frac{3}{4}$ " w; chain: 30" l	J1796	(min 2)
C	Ring	approx 1 $\frac{1}{2}$ " l x $\frac{1}{4}$ " w	J1794-6/7/8	(min 1)
D	Small Cuff	approx 2 $\frac{3}{8}$ " dia x 1 $\frac{3}{8}$ " w	J1793	(min 2)
E	Cluster Cuff	approx 2 $\frac{1}{2}$ " dia x 1 $\frac{1}{8}$ " w	J1792	(min 1)

## Tiny Pearl Necklace

Petite freshwater rice pearls are strung with tiny brass loops in this delicate long necklace.

F	Tiny Pearl Necklace	36" l	J1797	(min 2)
---	---------------------	-------	-------	---------

## Heirloom Brass Collection

One of our jewelry designers was born to a family of jewelers, and the designs for these chunky link chains are family heirlooms. Handmade from brass with two-directional hammering, an oval chain link bracelet has a sculptural j-hook closure. The collection of chains is augmented with shaped stacking rings and bangles, as well as additional pieces sold on pages 94–95. A case pack of nine rings includes three styles in three sizes.

### Heirloom Brass

G	Ring	$\frac{1}{8}$ " w	J1686	(min 9)
H	Oval Link Bracelet	8" l	J1687	(min 3)
I	Bangle	2 $\frac{1}{2}$ " dia x $\frac{1}{4}$ " w	J1688	(min 3)





### Marcella Collection

Inspired by jewelry from Brutalist sculpture of the 1950s, our Marcella Collection pairs slender Biwa pearls and polished brass in engaging architectural designs. An offset cluster of pearls set in brass on a brass chain forms an unusual pendant necklace. Post earrings and a ring with a comfortable rounded band feature single pearls set in unique brass bezel "sleeves". An adjustable cuff opens in front with two bezel-set Biwa pearls of different lengths, while a run of connected, bezel-set pearls forms a statement-piece cuff.



## Gold Vermeil & Gem Collection

The marriage of sparkling semi-precious gems and gold vermeil yields a tempting variety of treasures. Vermeil is sterling silver that has been plated with gold to give it a warm finish resembling pure gold. The innate beauty of a bevy of stones is highlighted with precise faceting. Aqua chalcedony is a lovely member of the quartz family; labradorite has a brilliant, subtly shifting blue and green fire; moonstone is characterized by a mysterious shimmer that mimics the luminescence of its namesake; semi-precious prehnite is a cool, aqueous green.

A Chalcedony & Prehnite Drop Earrings J2037 (min 1)  
2½" l x ¾" w

Square Facet Rings (please indicate size 6, 7 or 8)

B Prehnite gem: ½" sq J418-6/7/8 (min 1)

C Moonstone gem: ½" sq J1748-6/7/8 (min 1)

D Aqua Chalcedony gem: ½" sq J381-6/7/8 (min 1)

E Labradorite gem: ½" sq J382-6/7/8 (min 1)

Square Facet Earrings

F Prehnite gem: ½" sq J411 (min 2)

G Moonstone gem: ½" sq J1749 (min 2)

H Aqua Chalcedony gem: ½" sq J277 (min 2)

I Labradorite gem: ½" sq J278 (min 2)

Long Loop Teardrop Facet Earrings

J Moonstone 1¾" l x ¾" w J1745 (min 2)

K Aqua Chalcedony 1¾" l x ¾" w J1744 (min 2)

L Labradorite 1¾" l x ¾" w J1747 (min 2)

Oval Necklace

M Moonstone J1750 (min 1)

pendant: 1¼" l x ¾" w; chain: adjustable 16"-18" l

N Aqua Chalcedony J1771 (min 1)

pendant: 1¼" l x ¾" w; chain: adjustable 16"-18" l

O Labradorite J768 (min 1)

pendant: 1¼" l x ¾" w; chain: adjustable 16"-18" l

Tiny Square Facet Earrings

P Moonstone gem: ⅜" sq J1741 (min 2)

Q Aqua Chalcedony gem: ⅜" sq J1740 (min 2)

R Labradorite gem: ⅜" sq J695 (min 2)

contact your local sales representative or fax your order  
to 415 339 9400. visit us online at [roostco.com](http://roostco.com)







### Brass Earrings & Necklace

Symmetrical swoops of shining brass form a decorative design in our large but airy Nouveau Earrings. Hammered Round Earrings are crafted from flat disks of brass with a faint hammered pattern and subtle antiquing. A light hammering adds a twist to simple ear wires. Brass Oval Hoop Earrings and Bead Necklace dangle and drape beautifully.

A	Brass Tiny Bead Necklace J1252	adjustable: 21"–23" l (min 4)
B	Brass Oval Earrings J1128	3¾" l x 1½" w (min 4)
	Brass Earrings	
C	Hammered Round J722	1¼" dia (min 6)
D	Nouveau J720	2½" l x 1½" w (min 4)

### Moss Agate Knotted Necklace

Varying sizes and shades of mossy green agate beads and natural zircons are strung on sturdy silk thread with a brass button loop closure. The 36-inch length is perfect for a double wrap.

E	Moss Agate Knotted Necklace J1176	36" l (min 1)
---	--------------------------------------	------------------

### Green Kyanite Jumble Necklace & Earrings

Geometric brass circles tangle with organic gem blades in our delightful Green Kyanite Jumble offerings. The juxtaposition of smooth with rough and man-made with natural create an interesting aesthetic tension.

	Green Kyanite Jumble	
F	Necklace J632	18" l (min 2)
G	Earrings J631	2½" l x 1" w (min 2)

### Brass Petal Earrings

Featherweight, hammered brass petals move and catch light on teardrop earrings with loopy ear wires.

H	Brass Petal Earrings J1287	2½" l x ¾" w (min 3)
---	-------------------------------	-------------------------





## Napali Blue Kyanite Collection

Blades of rare blue kyanite from Brazil dangle from handmade graduating sizes of interlocking brass wire circles in a stunning blue necklace and earrings. A large slice of rough kyanite is edged in gold foil and hangs from a long brass chain.

### Napali Blue Kyanite

- A Earrings approx 3" l x 1" w  
J1395 (min 2)
- B Necklace 19" l  
J1396 (min 2)
- C Pendant Necklace  
pendant: 2¾" l x ½" w; chain: 30" l  
J1929 (min 2)







### Baby Ball Bracelet

A feminine bracelet is made of tiny baby ball chain woven around textured brass beads with a unique pinwheel pattern. This adjustable bracelet gracefully drapes around the wrist and closes with a lobster clasp.

D Baby Ball Bracelet J1928 (min 4)  
adjustable 7½"–8½" l x 1¼" w

### Brass Earrings

Three hammered brass squares or diamonds swing freely on a single round link, dangling from a hook ear wire.

Brass Earrings  
E Angle 3½" l x 1¼" w J1129 (min 4)  
F Squares 3" l x 1¾" w J1065 (min 4)

### Shibori Indigo Scarves

Soft fine wool is dip-dyed indigo blue to create these warm and wearable everyday scarves. Available in two patterns, each is a unique work of art combining varying shades of blues and natural. Their feather-light weight and ample size make them ideal for draping.

Shibori Indigo Scarves  
G Ombre 78" l x 18" w TX250 (min 2)  
H Stitch 78" l x 18" w TX249 (min 2)





### African Trade Bead & Brass Necklace

In Africa, beads were historically used to barter for goods and services. This created a high demand for trade beads in Africa and increased their value. Our glass and clay trade beads hail from Mali. We've mixed them with hand-formed brass beads from India for a zestful combination. The colorations of glass and clay beads in each strand range from shades of blue and green to cream and gray tones.

A African Trade Bead & Brass Necklace  
J1678 42" l (min 1)

B

D

C

E

F

A





### Izmir Collection

This unique collection melds metal with textiles for a wearable form of jewelry that beautifully complements clothing. Cotton threads in subtle shades of indigo and cream are woven with brass-plated metal beads in three styles of bracelets that layer nicely yet have plenty of impact on their own. A sizable tear drop of brass-plated beads accents a long snake-chain necklace; a smaller bead cluster on a snake chain is accented with cotton tassels.

Izmir			
B	Bead & Tassel Bracelet	7½" l	J1679 (min 3)
C	Ladder Bracelet	7½" l	J1675 (min 3)
D	Jumbo Teardrop Bead Necklace	pendant: 1¾" l x 1½" w; chain: 31" l	J1677 (min 2)
E	Bead & Tassel Necklace	pendant: 3" l x 1" w; chain: 32" l	J1676 (min 3)
F	Serpent's Tooth Bracelet	7½" l	J1610 (min 3)

### Kyan Collection

The strikingly colored mineral, kyanite, is aptly named for a Greek word that means deep blue. The columnar natural shape of the crystals lends itself especially well to rectangular forms. We've used a graduating series of crystals to create polished brass-bezeled ladder designs on a pendant necklace, bracelet and earrings. A matching pair of kyanite rectangles is set into polished brass bezels with sterling silver posts.

Kyan			
G	Post Earrings	approx ¾" l x ⅛" w	J1601 (min 3)
H	Ladder Necklace	pendant: approx 2¼" l x ⅝" w; chain: adjustable 30"-32" l	J1604 (min 2)
I	Ladder Bracelet	adjustable 7"-8½" l x 1¼" w	J1603 (min 2)
J	Ladder Earrings	2¾" l x ¾" w	J1602 (min 3)



## Peapod Earrings & Necklaces

Tiny faceted beads are set like seeds in golden pods to create pretty earrings and necklaces. Our pyrite peapod pieces are set with the sparkly dark pyrite stones known as Fool's Gold; a second version features faceted labradorite beads with their magical blue light-catching iridescence. A third style is set with silverite — a term for pastel sapphire gems fused with a shimmering metal oxide creating a diamond-like luster. Necklace settings and chains are brass; ear wires on earrings are gold-plated brass.

### Peapod Earrings

A	Pyrite J1901	2½" l x ¼" w (min 2)
B	White Silverite J1903	2½" l x ¼" w (min 2)
	Labradorite (not shown) J1905	2½" l x ¼" w (min 2)

### Peapod Necklaces

C	Pyrite pendant: 1¾" l x ¼" w; chain: 24" l J1900	(min 2)
D	White Silverite pendant: 1¾" l x ¼" w; chain: 24" l J1902	(min 2)
E	Labradorite pendant: 1¾" l x ¼" w; chain: 24" l J1904	(min 2)



## Rondelle Earrings

Multi-faceted rondelle-shaped pyrite, labradorite and silverite stone beads are gracefully wired onto a thin brass stick to create three unique pairs of earrings. An ear wire with a long end keeps the earrings firmly in place.

### Rondelle Earrings

F	Pyrite J1906	1½" l x ¼" w (min 2)
G	White Silverite J1907	1½" l x ¼" w (min 2)
H	Labradorite J1908	1½" l x ¼" w (min 2)

## Mystic Stone Collection

### Mystic Stone

I	Long Dangle Bead Earrings J1913	3½" l x ¾" w (min 2)
J	Silverite Briolette Earrings J1912	2½" l x ½" w (min 1)
K	Long Chain & Bead Necklace J1909	50" l (min 1)
L	Silverite Choker Dove Gray J1910	adjustable 16"-18" l (min 1)
M	Silverite Briolette Pendant Necklace pendant: approx 1½" l x ¾" w; chain: 18" l J1911	(min 1)





### Mystic Stone Collection

Lovely gemstones with an ethereal iridescence are the result of stones that are charged in the presence of rare metals, creating a durable lustrous finish. Our Mystic Stone Collection highlights silverite, a gem created from pastel sapphires that, when specially treated, resemble champagne diamonds. Dangling earrings feature a faceted golden rutile coin surrounded by tiny faceted white and gray silverite beads. A long, shapely, faceted briolette silverite stone with a grouping of teensy brass faceted beads is the centerpiece of a pair of earrings and pendant necklace. A faceted dove gray silverite choker draws the eye and begs to be layered with other pieces. Another layering piece, a long brass chain necklace with a lobster clasp for doubling, is strung with gray silverite and a medley of lustrous little mystic gems.







## Voyager & Keepsake Collections

A bevy of brass necklaces invites questions of origin and memories, and beckons new adventures. Carry photos of loved ones in our oversized oval and round lockets. A real British penny bearing the visage of Queen Elizabeth makes a fine charm. Working brass whistles replicate whistles of yore. Our magnifying lenses will help you read the fine print anytime, anywhere. A miniature hourglass tracks only the tiniest bit of time. Our compass ensures you'll always be headed in the right direction. A trusty telescope helps you see what lies ahead. A three-strand bracelet of rectangular links is a perfect casual accoutrement.

### Voyager Necklaces

- A Oval Locket  
pendant: 1¾" l x 1½" w; chain: 21" l  
J727 (min 2)
- B Long Whistle  
pendant: 3¾" l x ¼" w; chain: adjustable 30"–32" l  
J1801 (min 3)
- C Magnifying Lens  
pendant: 1½" dia; tab: ½" l; chain: 28" l  
J619 (min 2)
- D Short Whistle  
pendant: 1½" l x ¾" w; chain: 20" l  
J1802 (min 3)
- E Compass  
pendant: 1¾" dia x ¾" d; chain: 30" l  
J551 (min 2)
- F Round Locket  
pendant: 1½" dia; chain: 32" l  
J1803 (min 2)
- G Voyager Three-Strand Bracelet  
8" l  
J728 (min 4)

### Keepsake Necklaces

- H Lucky Penny  
pendant: 1¾" l x 1½" w; chain: 27" l  
J1800 (min 3)
- I Tiny Hourglass  
pendant: approx ¾" l x ¼" w; chain: 18" l  
J1236 (min 4)
- J Magnifier  
pendant: approx 2¼" l x 1½" w; chain: 30" l  
J1251 (min 4)
- K Telescope  
pendant: collapsible 1½"–3½" l x ¾" w  
chain: 30" l  
J1238 (min 3)



## Feather Necklaces & Earrings

Tiny bird feathers encased in a variety of vessels tickle the fancy. Petite glass bell jars with brass fittings and long chains permanently display sweet little feathers. Brass rectangles and ovals with fine corner details frame wisps of feathers between glass on airy brass chains. Diminutive cast brass feathers on gold-plated brass ear wires complete the collection.

A Feather Bell Jar Necklaces		
Small	J1767	(min 2)
pendant: 1¼" l x ⅝" dia; chain: adjustable 28"-30" l		
Large	J1768	(min 2)
pendant: 1½" l x ⅝" dia; chain: adjustable 28"-30" l		
B Brass Feather Earrings	J1766	(min 3)
1½" l x ⅜" w		
Feather Frame Necklaces		
C Rectangular	J1770	(min 2)
pendant: 1" l x 1½" w; chain: adjustable: 18"-20" l		
D Oval	J1769	(min 2)
pendant: ⅞" l x 1⅜" w; chain: adjustable: 18"-20" l		

## Pyrite Cage Ring

Small chunks of natural pyrite are captivated in a curved brass cage ring.

E Pyrite Cage Ring	1" l x ¾" w	J1524-6/7/8	(min 1)
--------------------	-------------	-------------	---------

## Keepsakes & Charms

Long layering necklaces in brass feature a miniature magnifying glass on a ball chain, a working hourglass on a stylized tubular bead chain and a small compass on a multi-gauge chain watch fob with a toggle closure. A charming and versatile locket was inspired by our love of collecting tiny treasures found in nature — the brass-edged glass locket opens to be filled with a memento of a hike in the woods or walk on the beach. A curve-edged rectangular brass plaque is stamped with a lovely bird design on a chain necklace that is the perfect length for layering with longer-chained jewelry.

F Brass Keepsake Locket Necklace	J1764	(min 3)
pendant: approx 1½" l x 1" w; chain: 24" l		
G Bird Charm Necklace	J1765	(min 3)
pendant: 1" l x 1½" w; chain: 20" l		
H Hourglass Necklace	J957	(min 3)
pendant: 2¼" l; chain: 32" l		
I Compass on Watch Fob Chain	J956	(min 3)
compass: ¾" dia; drop: 3" l; chain: 32" l		
J Mini Magnifying Glass Charm Necklace	J1237	(min 3)
pendant: approx 1½" l x ¾" w; chain: 18" l		

contact your local sales representative or fax your order  
to 415 339 9400. visit us online at [roostco.com](http://roostco.com)







C

D

B

A





### Milky Way Brass Cuffs & Ring

Brass with white zircon stones twinkle and glint like stars in the night sky. The collection features constellation shaped brass cuffs in three widths, and an equally stellar convex ovoid ring.

#### Milky Way Brass Cuffs

A Small	approx 2 $\frac{3}{8}$ " dia x $\frac{1}{8}$ " w	J1279	(min 2)
B Medium	2 $\frac{3}{8}$ " dia x $\frac{7}{8}$ " w	J1385	(min 1)
C Large	2 $\frac{3}{8}$ " dia x 1 $\frac{1}{4}$ " w	J1386	(min 1)
D Milky Way Ring	approx 1" l x $\frac{3}{4}$ " w	J1384-6/7/8	(min 1)

### Constellation Collection

A delicate necklace and pair of earrings capture the storied shapes of the Ursa Major and Minor constellations in brass set with mysterious sparkling black spinels. The necklace features a slender ball chain; earrings have sterling silver posts.

#### Constellation

E Post Earrings Ursa Minor		J1721	(min 2)
	$\frac{7}{8}$ " l x $\frac{1}{4}$ " w		
F Necklace Ursa Major		J1724	(min 2)
	pendant: 1 $\frac{1}{2}$ " l x 1 $\frac{1}{8}$ " w; chain: 18" l		

### Constellation Brass Necklaces

Brilliant natural white zircon stars sparkle on brass disks in textured rounds that hang on brass chain necklaces in two sizes. Three constellations represented are Cassiopeia, Andromeda and Pleiades with one of each style in the case pack.

#### Constellation Brass Necklaces

G Small		J1387	(min 3)
	pendant: $\frac{5}{8}$ " dia; chain: adjustable 16"-18" l		
H Large		J1280	(min 3)
	pendant: approx 1 $\frac{1}{8}$ " dia; chain: 24" l		





### Tamalpais Collection

Supple dark brown sheep leather and brass combine in a collection with simple, winsome details. A lariat has an etched brass bead slide and a polished brass loop detail. A leather necklace is fitted with a pair of spurs. One style of earrings has leather ties knotted on a brass tab; short leather tassels are joined with a polished brass bead on the other. Ear wires on earrings are gold-plated brass.

#### Tamalpais

- |   |  |                         |
|---|--|-------------------------|
| A | Leather & Brass Tab Earrings           | 3½" l x ½" w<br>(min 3) |
| B | Leather Spur Necklace                  |                         |
|   | pendant: 1½" l x ¾" w; necklace: 34" l |                         |
|   | J1979                                  | (min 3)                 |
| C | Leather Tassel Earrings                | 3¼" l x ¼" w<br>(min 4) |
|   | J1980                                  |                         |
| D | Leather Lariat                         | 30" l<br>(min 2)        |
|   | J1978                                  |                         |

### Anda Collection

Geometric and brass wood shapes are a modern take on tribal art in this collection of jewelry. For a nice play of contrasts, wood and brushed brass triangles dangle from an antiqued brass chain on a bib necklace with matching earrings with gold-plated brass ear wires. A long necklace has two groupings of brass triangles on antiqued brass chain. A pair of hoops with a dangling brushed brass tab detail is scaled up in two larger sizes.

#### Anda Brass & Wood

- |   |                          |                            |
|---|--------------------------|----------------------------|
| E | Earrings                 | 2¼" l x ¾" w<br>(min 3)    |
|   | J1943                    |                            |
| F | Necklace                 | 17½" l<br>(min 1)          |
|   | J1944                    |                            |
| G | Anda Brass Long Necklace | 33" l<br>(min 2)           |
|   | J1948                    |                            |
|   | Anda Brass Tab Hoops     |                            |
| H | Small                    | 1½" dia x 1¾" l<br>(min 3) |
|   | J1945                    |                            |
| I | Medium                   | 1¾" dia x 2½" l<br>(min 3) |
|   | J1946                    |                            |
| J | Large                    | 2½" dia x 3½" l<br>(min 3) |
|   | J1947                    |                            |







### Cipher Necklaces

A typewriter font initial cut from gold-plated brass on a baby ball chain has casual flair. Each Cipher Necklace is finished with a lobster clasp. Choose individual letters or a starter set; the set includes one each of the most popular letters: A, C, D, E, H, J, K, L, M, P, R and S.

- |   |   |           |         |
|---|---|-----------|---------|
| A | Cipher Necklace<br>(please indicate letter choice when ordering)<br>pendant: ½" l x ¾"-½" w; chain: 18" l | J2042     | (min 1) |
|   | Cipher Necklaces S/12<br>pendant: ½" l x ¾"-½" w; chain: 18" l  | J2042-SET | (min 1) |

### Chrysoprase Cube Collection

Chrysoprase is a gemstone variety of chalcedony with an appealing green color. The cubist cut of the stones is highlighted by our sculptural, modern, polished brass settings. The pendant necklace has a brass chain with lobster clasp closure; post earrings have sterling silver posts.

- |   |  |             |         |
|---|--|-------------|---------|
|   | Chrysoprase Cube                                 |             |         |
| B | Ring ¾" sq                                       | J2040-6/7/8 | (min 1) |
| C | Pendant Necklace<br>pendant: ¾" sq; chain: 18" l | J2038       | (min 2) |
| D | Post Earrings ¾" sq                              | J2039       | (min 2) |

contact your local sales representative or fax your order  
to 415 339 9400. visit us online at [roostco.com](http://roostco.com)



## Signet Necklaces

Our Signet Necklaces feature cool typewriter font initials cut out of modern gold-plated tags. A gold-plated baby ball chain with lobster clasp holds each tag. Choose individual letters or a starter set; the set includes one each of the most popular letters: A, C, D, E, H, J, K, L, M, P, R and S.

### E Signet Necklace

(please indicate letter choice when ordering)

pendant:  $\frac{3}{4}$ " l x  $\frac{3}{8}$ " w; chain: 18" l

J1960 (min 1)

### Signet Necklaces S/12

pendant:  $\frac{3}{4}$ " l x  $\frac{3}{8}$ " w; chain: 18" l

J1960-SET (min 1)

## Gold Bar Studs & Rings

Gold "bars" are the basis for this contemporary collection of gold-plated studs with a matte satin finish. Two bars adorn front opening adjustable rings: one with parallel bars and one with the bars offset; sold in a mixed case pack of three each of two styles. Another ring features a simple matte rectangle. Four styles of post earrings with square or rectangular bar designs are sold as a mixed case pack of two pairs each.

### Gold Bar

#### F Adjustable Ring

J1959

$\frac{1}{2}$ " w,  $\frac{5}{8}$ " w  
(min 6)

#### G Post Earrings

J1958

$\frac{1}{4}$ " -  $\frac{3}{8}$ " l x  $\frac{1}{8}$ " -  $\frac{1}{4}$ " w  
(min 8)

#### H Rectangle Ring

J1957-6/7/8

$\frac{3}{4}$ " l x  $\frac{3}{8}$ " w  
(min 2)





A

C



## Diamond Slice Necklace

Irregularly-shaped diamond slices are imperfect yet perfectly beautiful. Set in gold vermeil for subtle glitz. Forty petite diamond slices, totaling approximately six carats, link together in this necklace. Necklace has spring ring closure.

A Forty Diamond Slice Necklace 18" l  
J1560 (min 1)

## Svelte Pavé Collection

A diamond pavé collection with a decidedly modern twist marries tiny clusters of diamonds with sterling silver and gold-fill. An open-front cuff has differing diamond clusters set in sterling silver on the ends of a delicate, curved gold-filled wire. Three styles of rings have single or double rows of diamonds set into sterling silver on a gold-filled band; the vertical ring has brass accents on the diamond bar. A pavé pendant on a gold-fill chain also has brass accents offsetting the diamonds. Post earrings have square or bar-style clusters of pavé.

### Svelte Pavé

B Cuff 2 $\frac{3}{8}$ " dia x  $\frac{1}{2}$ " w  
J1963 (min 1)

C Necklace  
pendant: 1 $\frac{7}{8}$ " l x  $\frac{1}{8}$ " w; chain: 20" l  
J1964 (min 1)

### Svelte Pavé Post Earrings

D Bar  $\frac{3}{8}$ " l x  $\frac{1}{8}$ " w  
J1966 (min 1)

E Square  $\frac{1}{8}$ " sq  
J1965 (min 1)

### Svelte Pavé Rings

F Five Stone Vertical  $\frac{1}{2}$ " w  
J1969-6/7/8 (min 1)

G Five Stone Band  $\frac{1}{8}$ " w  
J1968-6/7/8 (min 1)

H Ten Stone Band  $\frac{1}{8}$ " w  
J1967-6/7/8 (min 1)





## Biwa Pearl Collection

These long, slender pearls are named after Lake Biwa in Japan where they were originally cultivated and grown in fresh water mussels rather than oysters. For this collection, we chose long Biwa pearls that range from one inch to slightly longer and suspended them within hand-cut and shaped brass settings. Ear wires on the earrings are made from gold-plated brass.

- Biwa Pearl
- A Bracelet  
adjustable 6½"–7¾" l x 1¼" w  
J1422 (min 1)
  - B Necklace  
pendant: approx 1½" l x 1¼" w  
chain: adjustable 26"–28" l  
J1423 (min 2)
  - C Earrings approx 2" l x ¼" w  
J1421 (min 2)

## Cyra Rice Pearl & Brass Collection

Tiny, delicate freshwater pearls are commonly known as rice pearls. Our Cyra Rice Pearl collection interplays scale and shape by suspending rows of rice pearls within larger handcut, hinged brass plaques. The collection includes a bracelet with j-hook closure, a brass chain pendant, and earrings that are finished with gold-plated brass ear wires. Gently burnished brass is handcut into curvy shapes to create our half-moon-shaped pendant, elliptical earrings and ring. The pendant hangs from a delicate brass chain; the earrings have brass chain details and gold-plated brass ear wires. The hand-hammered ring features a comfortable rounded band. Ring case pack includes two each of sizes 6, 7, 8.

- Cyra Rice Pearl
- D Bracelet adjustable 7"–7¾" l x 1" w  
J1347 (min 2)
  - E Pendant  
pendant: 2¾" l x 1¾" w; chain: 32" l  
J1348 (min 3)
  - F Earrings approx 2½" l x ¾" w  
J1346 (min 3)
- Cyra Brass
- G Pendant Necklace  
pendant: ¾" l x 2¼" w; chain: 18" l  
J1425 (min 2)
  - H Earrings approx 3" l x 1¼" w  
J1424 (min 4)
  - I Ring approx ¾" l x ½" w  
J1420 (min 6)





D

E

G

I

F

H

I



## Tabasco Geode Collection

Rare Tabasco geodes, found exclusively in this Mexican state on the Caribbean Coast, are the smallest geodes on earth. We hand-select each of these glittering little gems with an eye for the most sparkling of crystal pockets. No two are alike, and colors will range from light to pastel to dark. Shiny, slender, gold-plated brass is hand-formed into delicate hammered cuffs — one with geodes on each end of the front opening, another adorned with a single geode — perfect for stacking in multiples. Delicate gold-plated brass chains suspend single geodes in two sizes and are perfect for layering. Earring options abound with single or double geodes on drop earrings or single geode post earrings. Tiny geode rings stack sweetly; a large geode ring can pair with the simple hammered bands.

### Tabasco Geode

- A Large Pendant Necklace  
pendant: approx 7/8" l x 5/8" w; chain: 20" l  
J1659 (min 1)
- B Tiny Pendant Necklace  
pendant: approx 3/8" l x 1/4" w; chain: 18" l  
J1658 (min 1)
- C Double Cuff  
2 1/2" dia x 1/2" w  
J1657 (min 1)
- D Single Cuff  
2 1/2" dia x 1/2" w  
J1656 (min 1)
- E Double Drop Earrings  
approx 1 1/2" l x 1/2" w  
J1655 (min 1)
- F Single Drop Earrings  
approx 1 1/8" l x 1/2" w  
J1654 (min 2)
- G Post Earrings  
3/8"-1/2" dia  
J1653 (min 2)
- H Tiny Stacking Ring  
1/4"-3/8" w  
J1651-6/7/8 (min 1)
- I Large Ring  
1/2"-5/8" w  
J1652-6/7/8 (min 1)
- J Hammered Gold-Plated Stacking Ring  
(case pack includes 3 each of sizes 6, 7 and 8)  
1/8" w  
J1598 (min 9)









A

B

C

D

E



### Wire-Wrap Aqua Chalcedony Collection

Bright chalcedony chunks are polished to enhance their lustrous appeal. Brass wire encircles each stone. The bracelet closes with a sturdy brass-plated toggle.

#### Wire-Wrap Aqua Chalcedony

- |            |              |
|------------|--------------|
| A Earrings | 2" l x ¾" w  |
| J832       | (min 4)      |
| B Bracelet | 8½" l x 1" w |
| J831       | (min 3)      |

### Brass Buckle Cuff

The natural patina of high-copper brass gleams on our hand-tooled Brass Buckle Cuff.

- |                     |                       |
|---------------------|-----------------------|
| C Brass Buckle Cuff | approx 2¾" dia x ¾" w |
| J797                | (min 3)               |

### Helena Necklace

Metal rectangles are brass-plated and embossed to create an eye-catching necklace.

- |                         |         |
|-------------------------|---------|
| D Helena Necklace Linen | 20" l   |
| J828                    | (min 4) |

### Burnished Brass Hoops

Hammered brass holds a timeless appeal. Hammered hoop earrings have an easy hinged latch closure.

- |                         |         |
|-------------------------|---------|
| E Burnished Brass Hoops | 1¼" dia |
| J1297                   | (min 3) |

### Antiqued Brass Collection

An antiqued finish gives these brass earrings and necklaces a timeworn quality. Each petal in our Carapace Necklace is individually attached, giving the piece a unique three-dimensional quality. Simple bar and link pieces complete the collection.

- |                     |                                    |
|---------------------|------------------------------------|
| F Trio Earrings     | 2½" l x ½" w                       |
| J713                | (min 6)                            |
| G Bar Earrings      | ¾" l                               |
| J715                | (min 6)                            |
| H Carapace Necklace | pendant: 2" l x 1" w; chain: 36" l |
| J716                | (min 4)                            |
| I Trio Necklace     | pendant: 4" l x ¾" w; chain 18" l  |
| J714                | (min 4)                            |







A

F

G

H

B



## Brass Feather Collection

Delicate hand-hewn feathers of warm-toned brass form a collection that moves from subtle to dramatic. Three or seven feathers float on ear wires; a delicate pair of hoops dangles thirteen graduating lengths of feathers; all have gold-plated brass ear wires. A seven-feather necklace with brass chain teases the neck with a turquoise bead dangle at the s-hook closure. A profusion of brass feathers skim the neckline from a chocolate brown cotton cord with j-hook closure.

### Brass Necklaces

- A Feather & Cord 17" l  
J899 (min 3)
- B Seven Feather pendant: 2" l; chain: 18"-22" l  
J905 (min 4)

### Brass Earrings

- C Three Feather 2½" l  
J902 (min 4)
- D Feather Hoop 1½" dia x 3½" l  
J900 (min 3)
- E Seven Feather 2¾" l  
J903 (min 4)



## Royston Turquoise & Brass Collection

These statement pieces are handcrafted using highly desirable, fine-grade blue-green toned turquoise with a richly veined matrix. These unique stones are from one of the oldest turquoise deposits in the U.S. Each freeform cabochon is enclosed in a handmade full bezel setting of polished high-copper brass. The ring and cuff bracelet have a gently hammered band; petite and larger size pendants hang from delicately patterned chains.

### Royston Turquoise & Brass

- F Cuff approx 2¾" dia x 1¾" w  
J908 (min 1)
- G Ring approx 7/8" w  
J906-6/7/8 (min 1)
- H Necklace pendant: approx 2" l x 1½" w; chain: 18" l  
J909 (min 1)
- I Petite Pendant Necklace pendant: ¾" l x 5/8" w; chain: 16" l  
J898 (min 2)

## Turquoise & Brass Hoops

Brass hoop earrings in two sizes combine feathers with dangles of tiny turquoise beads. The small size pivots at mid-hoop while the larger size is a continuous circle.

### Turquoise & Brass Hoops

- J Small 1¼" dia x 2" l  
J907 (min 3)
- K Large 1¾" dia x 2¾" l  
J897 (min 2)









### Bolinas Brass Collection

We love to layer bracelets, and we designed our grouping of bead bracelets and cuff to be worn in multiples. Handmade brass beads in three varying shapes are strung on dark brown waxed cotton cord with button closure bracelets. A case pack of six bracelets includes two each of three styles. A companion cuff is woven on a metal frame from strips of brass with an antique brass finish. A brass ridged tube bead necklace is strung on cotton cord with a toggle closure. A necklace with a natural polished agate hangs from a handmade brass chain with a chunky front toggle closure. Three pair of hammered brass earrings are crafted in pod, leaf and tiny saucer shapes with long ear wires. See pages 6–7 for the Bolinas agate ring.

### Bolinas

A	Knotted Bracelet	7¼" l	J1827	(min 6)
B	Brass Cuff	2½" dia x 1" w	J1821	(min 2)
C	Brass Pod Earrings	2½" l x 1" w	J1818	(min 2)
D	Brass & Cord Necklace	25" l	J1840	(min 2)
E	Agate Toggle Necklace	pendant: approx 2" l x 1¼" w; chain: 25" l	J1828	(min 1)
F	Brass Saucer Earrings	2¾" l x ¾" w	J1838	(min 2)
G	Brass Leaf Earrings	2½" l x 1¼" w	J1820	(min 2)

### Crystal Honeycomb Collection

With their unique natural pyramid-like crystal structure, rare apophyllite points are highly prized. This collection sets uncut, sparkling apophyllite crystals into shiny brass honeycomb-shaped bezels. The unusual openwork honeycomb designs act as striking counterpoints to the beautiful natural crystals. A softly angled choker has a hook closure. Earrings have gold-plated brass ear wires. A cluster necklace features a lobster-clasp closure.

#### Crystal Honeycomb

A	Earrings	approx 2" l x ¾" w	J1631	(min 2)
B	Choker		J1632	(min 1)
		pendant: approx 2½" l x 1¾" w; choker: 5" dia		
C	Necklace		J1633	(min 1)
		pendant: approx 1¾" l x 2¼" w; necklace: up to 19" l		







### Brass Honeycomb Collection

Rendered in brass, this collection mimics the angular perfection of the hexagonal honeycomb pattern, one of nature's many astounding design feats. Each piece is hand-made and polished to a high shine. An extra-long interlocking chain pairs nicely with dangling cluster earrings with loopy gold-plated brass ear wires. A necklace features a single honeycomb charm on a delicate chain and closes with a lobster clasp. Hexagonal-shaped stacking bangles and rings and angled hoops in classic or jumbo size are stylishly modern. Bangles and rings are sold as sets of three; rings are packed one set each of sizes 6, 7 and 8 in a case pack.

#### Brass Honeycomb

D	Stacking Rings S/3	1/8" w	J1634	(min 3)
E	Bangles S/3	2 3/8" dia	J1638	(min 3)
F	Cluster Earrings	2 3/4" l x 3/4" w	J1637	(min 2)
G	Long Necklace	40" l	J1640	(min 2)
H	Hex Hoops Small	1 1/2" dia	J1635	(min 2)
I	Hex Hoops Large	2 3/8" dia	J1636	(min 2)
J	Charm Necklace	pendant: 3/4" dia; chain: adjustable 28"-29" l	J1639	(min 3)







A



C



D



E



F



B

## Peapod Earrings

Delicate brass "peapod" frames cradle gleaming gold-plated pyrite beads in a pair of earrings; another pair is set with striking, slightly iridescent midnight blue spinels. Ear wires are gold-plated brass.

### Peapod Earrings

- |   |                               |                         |
|---|-------------------------------|-------------------------|
| A | Gold-Plated Pyrite<br>J1672   | 2¼" l x ¼" w<br>(min 2) |
| B | Midnight Blue Spinel<br>J1673 | 2¼" l x ¼" w<br>(min 2) |

## Gold Drusy Collection

Sparkling natural crystal drusies are plated with gold metallic finishes to create this dramatic collection. Contrasting bezels and chains of oxidized silver-plated brass provide an unexpected modern element on the necklaces.

### Gold Drusy

- |   |                                  |   |
|---|----------------------------------|---|
| C | Round Earrings<br>J1194          | approx 1¼" l x ½" dia<br>(min 2)                                      |
| D | Long Rectangle Earrings<br>J1195 | approx 1½" l x ¼" w<br>(min 2)  |
| E | Round Necklace<br>J1196          | pendant: approx ¾" dia; chain: adjustable 16"-18" l<br>(min 2)        |
| F | Rectangle Necklace<br>J1197      | pendant: approx ¾" l x ½" w<br>chain: adjustable 16"-18" l<br>(min 2) |

## Crystal Point Collection

### Crystal Point

- |   |   |  |
|---|---|--|
| G | Post Earrings<br>J1674                        | ¼" l x ½" w<br>(min 3)   |
| H | Multi Necklace<br>J1330                       | adjustable 18"-20" l<br>(min 1)  |
| I | Single Earrings<br>J1327                      | 1½" l x ¼" w<br>(min 4)  |
| J | Drop Earrings<br>J1328                        | 2¾" l x ¼" w<br>(min 2)  |
| K | Drop Necklace<br>J1331                        | pendant: approx 1¾" l x ¼" w<br>chain: adjustable 18"-20" l<br>(min 2) |
| L | Large Drop & Pyrite Pendant Necklace<br>J1329 | pendant: approx 2½" l x ½" w; chain: 28" l<br>(min 1)                  |
| M | Crystal Point & Geode Lariat<br>J1671         | approx 30"-31½" l<br>(min 2)   |





### Crystal Point Collection

The name "quartz" is derived from a Greek word for ice, because it was thought that quartz was ice formed by the gods. Hexagonal prisms with pyramidal ends, these naturally-formed crystal points from Brazil provide a cool contrast to warm, high-copper brass metalwork. A dramatic row of quartz points is the centerpiece of a multi-gauge chain necklace. Single crystal earrings are looped and knotted on earwires, while small double-terminated crystals are delicately encircled in brass on sterling silver post earrings. A crystal drop necklace and earrings have a brass caliper setting. A single quartz "icicle" swings from a brass trapeze necklace with a pyrite nugget accent. A beautiful and unusual lariat loops a crystal point dangling from a pyrite bead accented chain through a polished occa geode slice.



## Etruscan Glass Bottles

Heavenly deep blue and foggy gray glass bottles evoke ancient Italian artifacts. Sold by color in sets of seven assorted shapes and sizes, these versatile vessels feature small bubbles within their walls for added allure.

### Etruscan Glass Bottles

2¾" dia x 2¾" h to 1½" sq x 4¾" h

- A Cerulean Blue S/7  
GL1030 (min 2)
- B Dusky Gray S/7  
GL1031 (min 2)

## Hammered Wire Hoops

A fresh approach to the classic hoop earring, hand-hammered wires are shaped and tapered to form a single, self-closing loop. Available in sterling silver and gold vermeil, the easy-to-wear rounds and teardrops come in four graduated sizes.

### Hammered Wire

- C Silver Hoops
  - Small 1" dia  
J993 (min 2)
  - Medium 1¼" dia  
J994 (min 2)
  - Large 1¾" dia  
J995 (min 2)
  - Extra Large 2¼" dia  
J996 (min 2)
- D Vermeil Hoops
  - Small 1" dia  
J989 (min 2)
  - Medium 1¼" dia  
J990 (min 2)
  - Large 1¾" dia  
J991 (min 2)
  - Extra Large 2¼" dia  
J992 (min 2)
- E Oval Silver Hoops
  - Small 1" l x ¾" w  
J985 (min 2)
  - Medium 1¾" l x ⅞" w  
J986 (min 2)
  - Large 2½" l x 1¾" w  
J987 (min 2)
  - Extra Large 3" l x 1½" w  
J988 (min 2)
- F Oval Vermeil Hoops
  - Small 1" l x ¾" w  
J981 (min 2)
  - Medium 1¾" l x ⅞" w  
J982 (min 2)
  - Large 2½" l x 1¾" w  
J983 (min 2)
  - Extra Large 3" l x 1½" w  
J984 (min 2)







E

F



## Aqua Chalcedony Facet Collection

Aqua chalcedony surrounded by silver bezels compose our effortlessly stylish collection of earrings, pendants and rings. Faceted round stone earrings complement our square offerings. Square Facet Pendant hangs from sterling silver chain accented with silver beads.

### Aqua Chalcedony

- A Round Facet Earrings gem:  $\frac{3}{8}$ " dia  
J650 (min 2)
- B Square Facet Silver Necklace  
pendant:  $\frac{1}{2}$ " sq; chain: 18" l  
J488 (min 1)
- C Square Facet Silver Earrings  
gem:  $\frac{1}{2}$ " sq  
J489 (min 2)
- D Square Facet Silver Ring  
gem:  $\frac{1}{2}$ " sq  
J490-6/7/8 (min 1)

## Silver Filigree Leaf Earrings

Our handmade silver filigree earrings are crafted using traditional Indian jewelry techniques. Intricate copper wire design is silver-plated to enhance each tiny detail.

- E Silver Filigree Leaf Earrings  
2 $\frac{3}{4}$ " l x 1" w  
J237 (min 6)

## Constellation Necklaces & Milky Way Cuffs

The Cassiopeia, Andromeda and Pleiades constellations shine forth in natural white zircon in our silver-plated brass versions of the Constellation Necklaces. Small or large disk necklaces are packed with one of each style in a case pack. Milky Way cuffs in silver-plated brass feature the radiant white zircon stones imbedded in three widths of shaped cuffs.

### Milky Way Silver-Plated Cuffs

- F Small approx 2 $\frac{3}{8}$ " dia x  $\frac{1}{8}$ " w  
J1394 (min 2)
- G Medium 2 $\frac{3}{8}$ " dia x  $\frac{7}{8}$ " w  
J1861 (min 1)
- H Large 2 $\frac{3}{8}$ " dia x 1 $\frac{3}{4}$ " w  
J1862 (min 1)

### Constellation Silver-Plated Necklaces

- I Small  
pendant:  $\frac{5}{8}$ " dia; chain: adjustable 16"-18" l  
J1859 (min 3)
- J Large  
pendant: approx 1 $\frac{1}{8}$ " dia; chain: 24" l  
J1393 (min 3)





H

G

I



## Hammered Silver-Plated Teardrop Collection

Enchanting lightly hammered teardrops made from silver-plated brass in varying sizes swing from a silver-plated chain, and a duo of teardrops is joined on a dangle earring.

### Hammered Silver-Plated Teardrop

A	Necklace	20" l
	J1461	(min 3)
B	Duo Earrings	2¾" l x ¾" w
	J1460	(min 4)

## Silver-Plated Cuffs & Bangles

Satiny silver-plated brass is hand-crafted into a wave-shaped cuff with a subtle brushed appearance, a cuff with charming buckle closure and a set of two bangles with a latch detail that are especially appealing when stacked.

### Silver-Plated

C	Buckle Cuff	2½" dia x ½" w
	J1467	(min 3)
D	Brushed Wave Cuff	2½" dia x 1½" w
	J1462	(min 2)
E	Latch Bangles S/2	2½" dia x ½" w
	J1468	(min 2)

## Silver-Plated Feather Collection

Slender feathers of silver-plated brass sway with movement as they dangle in multiples from earrings or delicate chain necklaces.

### Silver-Plated Earrings

F	Three Feather	2½" l
	J1463	(min 4)
G	Seven Feather	2¾" l
	J1464	(min 4)

### Silver-Plated Necklaces

H	Three Feather	pendant: 2" l; chain: adjustable 19"-22" l
	J1465	(min 3)
I	Seven Feather	pendant: 2" l; chain: adjustable 19"-22" l
	J1466	(min 3)

## Stone & Sapphire Knotted Necklace

Perfect for layering with silver jewelry and dressing up a denim ensemble, our hand-knotted necklace is made with deep blue dumortierite beads. Named for a French paleontologist, and also known as the "blue denim stone", the stone contrasts nicely with faceted sterling silver beads and tiny faceted sapphire beads on a gray silk cord with button closure.

J	Stone & Sapphire Knotted Necklace	36" l
	J1736	(min 1)





D

F

H

E

I

G

J



### Samarra Silver Scythe Collection

Sterling silver is hand-hammered in a scythe shape with hinged latch closures in earrings and a silver bracelet. The pearl bracelet features five baroque freshwater pearls.

#### Samarra Silver Scythe

- |                  |   |
|------------------|---|
| A Pearl Bracelet | approx 2% <sup>1</sup> dia<br>(min 1)                   |
| B Earrings       | approx 1% <sup>1</sup> l x 1% <sup>1</sup> w<br>(min 2) |
| C Bracelet       | approx 2% <sup>1</sup> dia<br>(min 1)                   |





## Baroque Pearl Collection

A collection inspired by classic materials and settings, reinterpreted in a contemporary way. Baroque pearls are individually selected for their unique irregular shape, ample size and glowing white color. Oxidized sterling silver is shaped in an updated prong setting for a single pearl. The pendant setting is scribed with a sea-coral branch texture and hangs from a delicate antiqued chain.

Baroque Pearl			
D Ring	approx ¼" l x ⅜" w	J1151-6/7/8	(min 1)
E Pendant Necklace		J1154	(min 1)
	pendant: approx ¼"-½" dia; chain: 18" l		
F Post Earrings	approx ⅜" dia	J1152	(min 2)

## Herkimer Diamond Collection

With unusual clarity, rare double-termination and eighteen natural facets so smooth and brilliant they don't need polishing, these naturally-occurring quartz crystals from Herkimer County, New York, were discovered in the late 18th century and thought at first to be diamonds. Our artisan jewelers set these sparklers in sterling silver prong settings that reference the past with an antiqued finish. Earrings, pendant and solitaire ring feature artisan shaped prong settings. The Bib Necklace drapes small Herkimer diamonds captured in short lengths of antiqued silver chain.

Herkimer Diamond			
G Small Post Earrings	approx ⅛" l x ⅛" w	J1146	(min 2)
H Dangle Earrings	approx 1¼" l x ¼" w	J1148	(min 2)
I Large Post Earrings	approx ⅜" l x ¼" w	J1147	(min 2)
J Solitaire Ring	approx ⅜" l x ¼" w	J1145-6/7/8	(min 1)

## Lyanna Collection

Startlingly brilliant natural quartz crystals and white zircons stand out particularly well from dark rhodium-plated brass in our Lyanna Jewelry Collection. A slim, graceful open-front cuff, rhodium-plated brass cuff is finished with a single quartz crystal stone on one end, and layers nicely with a second cuff with a nail head detail. A pair of quartz crystal rings with flat ring bands feature double crystals or a long single crystal. A third ring is a clear white zircon set on a chunky flat band for an unusual take on a classic solitaire.

Lyanna			
K Quartz Crystal Cuff		J1780	(min 3)
	approx 2½" dia x ⅜" w		
L Nailhead Cuff	2½" dia x ⅛" w	J1779	(min 3)
M Two Crystal Ring		J1782-6/7/8	(min 1)
	approx ¼" w		
N Single Crystal Ring		J1781-6/7/8	(min 1)
	approx ¼" w		
O White Zircon Ring	⅛" dia	J1783-6/7/8	(min 1)

## Mini Crystal Geodes

A tiny crystal geode is expertly halved to reveal a shimmering white gem interior. These little wonders are a beautiful platform for displaying rings, bracelets and other small precious items.

P Crystal Geode Pair Mini		ST233	(min 12)
	approx 1¾"-2½" dia		





## Peapod Collection

We've expanded our very popular, wearable peapod collection to include faceted Arizona turquoise beads and tiny lustrous freshwater potato pearls. Set in brass. Necklace chains are brass; earrings have gold-plated earwires.

### Peapod Necklaces

- A Pearl  
pendant: 1¾" l x ¼" w; chain: 24" l  
J1785 (min 2)
- B Turquoise  
pendant: 1¾" l x ¼" w; chain: 24" l  
J1787 (min 2)

### Peapod Earrings

- C Pearl 2½" l x ¼" w  
J1784 (min 2)
- D Turquoise 2½" l x ¼" w  
J1786 (min 2)

## Leather & Bead Bolo

A single vintage turquoise-colored glass enamel bead sits between two ridged brass beads on a supple leather lariat. This is a great piece for layering with shorter necklaces.

- E Leather & Bead Bolo adjustable length  
J1788 (min 3)

## Rondo Brass Bracelet

A disk of hammered brass is attached to a thick gauge wire bracelet with a hinge latch closure.

- F Rondo Brass Bracelet 2½" dia x 1¾" w  
J1381 (min 3)

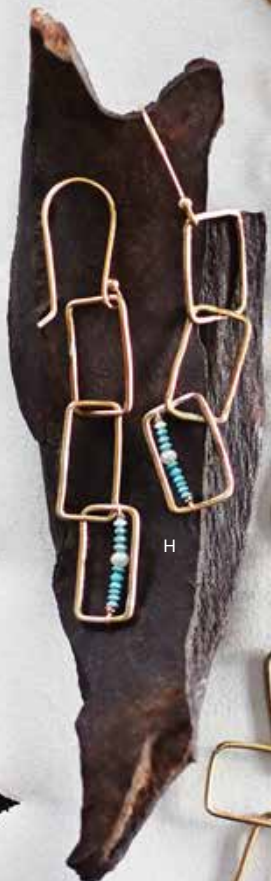
## Lia Brass Collection

Harmonious brass rectangles in different sizes are linked and subtly adorned with hand-wired tiny turquoise and pearl seed beads. The ring has a single, soft-edged rectangle and three rows of tiny beads. Please indicate ring size 6, 7 or 8.

### Lia Brass Chain Link

- G Bracelet 7½" l  
J1318 (min 3)
- H Earrings approx 2½" l x ¾" w  
J1316 (min 3)
- I Necklace 33" l  
J1319 (min 2)
- J Lia Brass Ring approx ¾" l x ½" w  
J1317-6/7/8 (min 2)









A

D

B

E





F

## Garden Quartz Necklaces & Crescent Chain Earrings

Lodalite quartz, also known as garden quartz, has unusual inclusions that add to the stone's visual interest. Rounded rectangular tube beads of garden quartz are combined with mod brass designs in a swinging pendant necklace and multi-bead lariat. Chain and crescent brass earrings on gold-plated brass earwires complement the stylishly off-beat necklaces.

Garden Quartz	
A Pendant Necklace	pendant: approx 3½" l x 2" w; chain: 30" l
J1689	(min 2)
B Lariat	27½" l
J1690	(min 1)
C Crescent Chain Earrings	1½" l x 7⁄8" w
J1692	(min 4)



G

C

## Heirloom Brass Collection

Heirloom chain designs from one of our favorite Roost jewelry designer's family portfolio begged to be expanded into a complete jewelry collection. Handmade from brass and hammered in two directions for added dimension, oval and rectangular link chains are 70s era gems. Stacking rings, stick earrings with sterling silver posts, double oval link earrings, and a sculptural cuff complete the extensive collection. Rings are sold in a case pack of nine — three styles each in three sizes.

Heirloom Brass	
D Rectangular Link Chain Necklace	36" l
J1696	(min 2)
E Ring	1⁄8" w
J1686	(min 9)
F Oval Link Chain Necklace	19½" l
J1695	(min 2)
G Stick Post Earrings	1¾" l x ¼" w
J1691	(min 4)
H Cuff	2½" dia x ¼" w
J1694	(min 3)
I Oval Link Earrings	2½" l x ½" w
J1693	(min 4)



H



I

contact your local sales representative  
or fax your order to 415 339 9400.  
visit us online at [roostco.com](http://roostco.com)









## Lapis Collection

Lapis lazuli is a gemstone that has been revered through the ages for its deep radiant blue color. Our Neela Lapis Pendant Necklace sets a smooth oval of striated lapis into a simple brass bezel, while the lapis and brass Liquid Bead Necklace drapes nicely in a long, languid strand. The lapis and brass Neela Faceted Plate Bracelet is designed with an unexpected offset stone. Tiny hand-cut beads of precious lapis lazuli are accented with golden rutilated quartz, turquoise and a variety of brass beads in our Sarisang Multi-Strand Necklace. Deep blue lapis heishi beads are accented with faceted brass beads in brass "peapod" earrings with gold-plated brass ear wires.

### Neela Lapis

A	Pendant Necklace	
	pendant: approx 1½" l x 1¼" w	
	chain: adjustable 18"-20" l	
	J1403	(min 1)
B	Liquid Bead Necklace	32" l
	J1402	(min 2)
C	Faceted Plate Bracelet	
	adjustable 7"-8" l x ⅞" w	
	J1401	(min 1)
D	Sarisang Lapis Long Multi-Strand Bead Necklace	
	36" l	
	J1449	(min 1)
E	Lapis Peapod Earrings	2½" l x ¼" w
	J1772	(min 2)

## Geometric Brass Collection

Burnished brass disks folded over tan cording create the three-strand Half Moon Necklace. Ivory cotton strings of irregular brass beads gather to form the Multi-Strand Bead Necklace. Our Helena Necklace is made of metal rectangles embossed and folded over dark brown cording. Hollow domes of brass-plated metal nestle together in light and fluid bracelets; case pack includes three each of two styles.

F	Domes Bracelet	2¾" dia
	J726	(min 6)
G	Half Moon Necklace Brass	28" l
	J718	(min 2)
H	Multi-Strand Bead Necklace Brass	
	adjustable 19"-22" l	
	J800	(min 3)
I	Helena Necklace Chocolate	20" l
	J827	(min 4)

## Brass Lace Earrings

Two pairs of earrings are cast in brass to resemble fine lace. One pair features single lace disks; the other pair has three tiny dangling disks. Earrings have gold-plated brass ear wires.

	Brass Lace	
J	Earrings	1½" l x 1" w
	J1404	(min 3)
K	Triple Earrings	2⅜" x ½" w
	J1991	(min 3)



### Indra Collection

Metal beads with an antique brass finish are hand-strung to create jewelry with an appealing tribal feel. A three-strand necklace with lobster clasp can be worn long or double-wrapped into a six-strand necklace. Four strands of dangling antique brass-finished beads with a brown cotton strap create a gorgeous bib necklace. Tribal-style hoop earrings are made from brass. A bracelet is strung on chocolate brown cotton cord with an adjustable closure; a second version is strung on stretchy elastic cord.





## Indra Collection

Indra	
A Three-Strand Necklace	37" l
J1847	(min 3)
B Bib Necklace Brass	adjustable 17"-20" l
J1848	(min 3)
C Brass Hoops Small	1½" dia x 2" l
J1852	(min 3)
D Brass Hoops Large	2½" dia x 3" l
J1851	(min 2)
E Bracelet Brass & Cord	¾" w; adjustable
J1849	(min 6)
F Bracelet Brass	2½" dia x ½" w
J1850	(min 8)

## Tara Chrysoprase Collection

Art Nouveau flair meets contemporary style in our Tara Chrysoprase Collection. Chrysoprase, a gemstone variety of chalcedony with an opaque cryptocrystalline structure, is favored for its striking green color with interesting brown inclusions. Our stones are cut into long, multi-faceted oval cabochons and paired with satin-finished brass. A single cabochon makes a simple pendant necklace. Smaller satin brass ovals contrast with Chrysoprase cabochons in a pair of post earrings, cuff and ring.

Tara Chrysoprase	
G Pendant Necklace	pendant: approx 2¾" l x ½" w; chain: 21" l
J1845	(min 1)
H Earrings	approx 2¾" l x ½" w
J1844	(min 1)
I Cuff	approx 2½" dia x 1½" w
J1846	(min 1)
J Ring	approx 1¾" w
J1843	(min 1)

## Maya Mini Square Bead Cuff

A lightweight cuff is crafted by hand from tiny brass-plated, antique gold-finished metal beads strung on wire.

K Maya Mini Square Bead Cuff Antique Gold	
2¾" dia x 1¾" w	
J584	(min 4)

## Aurora Knotted Bead Necklace

Antiqued gold-finished metal and glass beads are knotted by hand to create this five-strand necklace. Can be worn long or doubled.

L Aurora Knotted Bead Necklace Antique Gold	
36" l	
J598	(min 3)







## Pyrite Collection

Lustrous pyrite married with warm brass makes for a striking pairing in these earrings and necklaces. For our Pyrite Abacus Hoop Earrings and Necklace, strands of pyrite are strung in rows inside delicate brass hoops with gold-plated ear wires. Our long chain necklace features a gold foil-trimmed quartz drop dangling from an elaborate strand of pyrite beads. The captivating cuff is substantial yet subtle, comprised of seven strands of pyrite beads intricately woven and bound together with gold-filled wire and clasp.

- Pyrite Abacus Hoop
- A Earrings 1½" l x 1" dia  
J1550 (min 1)
- B Pendant Necklace  
pendant: 1¾" dia; chain: adjustable 30"–32" l  
J1551 (min 1)
- C Pyrite Long Chain with Quartz Drop  
pendant: approx 1¼" l x ¾" w; chain: 32" l  
J363 (min 1)
- D Crocheted Pyrite Bracelet 2½" dia x 1" w  
J561 (min 1)

## Hammered Brass Collection

Rings of hammered brass link to form an intriguing yet simple, long necklace. Branching earring shapes are created by brazing small pieces of brass together at a high temperature, imbuing them with colors from gold to copper.

- Hammered Brass
- E Chain Necklace 54" l  
J242 (min 2)
- F Nori Earrings 3" l x 1½" w  
J233 (min 4)
- G Chain Bracelet 7½" l  
J412 (min 4)

## Liquid Bronze Cuff

Cast from high-quality brass, this dramatic bracelet has a molten appearance.

- H Liquid Bronze Cuff 2½" dia x 2" w  
J210 (min 2)

## Squares Bracelet

Open on one side, hollow squares of brass-plated metal nestle together to create this light and fluid bracelet with a warm, burnished patina. The squares are strung on elastic to fit most wrists. Case pack includes three each of two sizes.

- I Squares Bracelet Brass  
2¾" dia x ¼" w, 2¾" dia x ⅜" w  
J701 (min 6)





E

H

F

G





## Bella Bead Collection

An intricate network of flat metal beads is meticulously hand-stitched to silk and suede to create these detailed bracelets and coin purses. Bracelets are finished with a bell-shaped bead-and-toggle closure. Coin purse features a metal zipper and black silk lining.

### Bella Bead Coin Purses

A	Rectangle J611	5¼" l x 3¾" w x ½" h (min 2)
B	Parasol J609	5¼" l x 3¾" w x ½" h (min 2)
C	Oval J610	5¼" l x 3¾" w x ½" h (min 2)

### Bella Bead Bracelets

D	Rectangle J606	approx 7" l x 7⁄8" w (min 4)
E	Parasol Thin Antique Brass J602	approx 7" l x 5⁄8" w (min 4)
F	Parasol Wide Antique Brass J604	approx 7" l x 1½" w (min 4)
G	Circles J605	approx 7" l x 1¾" w (min 4)
H	Vertical Lines J608	approx 7" l x 1½" w (min 4)
I	Parasol Thin Silver J601	approx 7" l x 5⁄8" w (min 4)
J	Parasol Wide Silver J603	approx 7" l x 1½" w (min 4)
K	Concentric Circle J607	approx 7" l x 1¾" w (min 4)



## Horn Filigree Earrings

A Fair Trade organization in Vietnam partnered with a French designer who designed these delicate Filigree Horn Earrings. Sterling silver ear wires.

L	Filigree Fan Earrings White Horn J759 Black Horn J760	1¾" l x 2" w (min 3) (min 3)
M	Filigree Flower Earrings White Horn J761 Black Horn J762	2" l x 1¾" w (min 3) (min 3)
N	Filigree Clover Earrings White Horn J763 Black Horn J764	1¾" l x 1¾" w (min 3) (min 3)

## Brazilian Black Agate Rings

Dramatic rings are crafted from a single piece of Brazilian agate, and carefully cut to frame the drusy crystals. Please indicate size 6, 7 or 8.

### Brazilian Black Agate Rings

O	Drusy Wide J216-6/7/8	1" w (min 1)
P	Chunky Polished J217-6/7/8	1½" w (min 1)
Q	Drusy Narrow J215-6/7/8	¾" w (min 1)





F

G

H

K

J

O

P

I

Q

D

E



## Quartz Perfume Bottles

Who says beauty can't be functional? These dainty vessels are meticulously hand-cut from solid quartz crystal, then fitted with an airtight insert for storing perfume. Stoppers include a small glass wand.

### Quartz Perfume Bottles

- A Diamond 2" l x 1½" w x 2½" h  
ST261 (min 2)
- B Oval 1" l x ¾" w x 2¼" h  
ST262 (min 2)
- C Flask 1¾" l x 1" w x 2¼" h  
ST263 (min 2)

## Horn Ring Stand

Show off rings in a naturally stylish way with these striking horn pieces made from the tips of unpolished horn. Sold as a mixed case pack of six, with two pieces of each size.

- D Horn Ring Stand  
approx 1¼"-1½" dia x 3¼"-5¼" h  
HB134 (min 6)

## Ventana Jewelry Boxes

Gray-washed kiri wood boxes carefully display and store small treasures underneath hinged, glass-windowed lids. Bottom is padded and covered with natural flax linen. Tiny magnets embedded in the lid assure a snug closure. Available in three box sizes with compartments of varying dimensions.

- E Ventana Jewelry Boxes
  - Small 9¼" l x 6¼" w x 2¾" h  
W655 (min 4)
  - Medium 11¾" l x 7¾" w x 2¾" h  
W656 (min 3)
  - Large 15¾" l x 9¾" w x 2¾" h  
W657 (min 2)





### Gray River Pearl Collection

This unique collection of silver-gray freshwater pearls is hand-strung on waxed cotton cord by a fair trade cooperative in the Philippines. The pearls are carefully selected for their unique, irregular shapes, ample size and exquisite color. Elegant designs range from a single pearl suspended at the center of a necklace to intricately woven strands. The three wrap bracelet can also be worn as a necklace.

	Gray River Pearl	
F	Multi-Strand Necklace J346	23"-25" l (min 2)
G	Single Pearl Necklace J348	16" l (min 4)
H	Three Wrap Bracelet J347	22"-24" l (min 1)
I	Five Pearl Bracelet J350	7½" l (min 4)
J	Multi-Strand Bracelet J349	7½" l (min 2)
K	Double Pearl Earrings J344	1½" l (min 3)
L	Pearl Earrings J345	1" l (min 3)







A

E

J

D

K

B

F





## Artefact Beads & Amulets

This jewelry collection inspired by tribal jewelry from the Old World combines rustic silver-plated brass and soft brown leather. Hoops are silver-plated brass.

### Artefact Petal Bead

- |   |                          |  |
|---|--------------------------|--|
| A | Hoop Earrings            | approx 2 $\frac{3}{4}$ " l x 1 $\frac{1}{2}$ " dia<br>(min 2)                  |
| B | Leather Necklace         | adjustable 16"-18" l<br>(min 1)  |
| C | Artefact Amulet Necklace | pendant: 1 $\frac{1}{4}$ " l x $\frac{7}{8}$ " w; cord: up to 30" l<br>(min 1) |

## Mosaik Bracelets

Moorish tile inlays inspired these stylish and comfortable stretch bracelets. Woven from silver-plated beads and available in three different widths, the narrow and wide versions have an airy crocheted pattern, while the medium width has a tightly woven mosaik pattern.

### Silver Mosaik Bracelets

- |   |        |  |
|---|--------|--|
| D | Small  | 2 $\frac{1}{8}$ " dia x 1" w<br>(min 6)                |
| E | Medium | 2 $\frac{1}{8}$ " dia x 1 $\frac{1}{2}$ " w<br>(min 6) |
| F | Large  | 2 $\frac{1}{8}$ " dia x 2 $\frac{3}{8}$ " w<br>(min 6) |

### Antique Silver Mosaik Bracelets

- |   |        |  |
|---|--------|--|
| G | Small  | 2 $\frac{1}{8}$ " dia x 1" w<br>(min 6)                |
| H | Medium | 2 $\frac{1}{8}$ " dia x 1 $\frac{1}{2}$ " w<br>(min 6) |
| I | Large  | 2 $\frac{1}{8}$ " dia x 2 $\frac{3}{8}$ " w<br>(min 6) |

## Tulum Ring

A stylish, long silver-plated brass ring is engraved with a Mayan sun motif for a modern ethnic vibe. Adjustable.

- |   |                   |  |
|---|-------------------|--|
| J | Tulum Ring Silver | 1 $\frac{1}{2}$ " l x $\frac{7}{8}$ " w<br>(min 6) |
|---|-------------------|--|

## Pallas Necklace

Silver-plated metal and glass beads are knotted by hand to form a multi-strand layered necklace.

- |   |                 |                  |
|---|-----------------|------------------|
| K | Pallas Necklace | 38" l<br>(min 3) |
|---|-----------------|------------------|

## Bella Beaded Wide Cuff

An intricate network of metal beads hand-stitched to a suede cuff creates a statement bracelet.

- |   |                        |  |
|---|------------------------|--|
| L | Bella Beaded Wide Cuff | 7 $\frac{1}{2}$ " l x 1 $\frac{1}{8}$ " w<br>(min 4) |
|---|------------------------|--|



## Mosaic Brass Beads

Faceted brass tribal beads are hand-strung in a striking mosaic row pattern on dark-brown cotton cord with a decorative ball and loop closure. The long necklace alternates single and double beads, while the bracelet features double and triple rows.

### Mosaic Brass

A	Necklace	24" l
	J1097	(min 2)
B	Bracelet	8" l
	J1098	(min 4)

## Mosaik Bracelets

Moorish tile inlays inspired these stylish and comfortable stretch bracelets. Woven from brass-plated beads and available in three different widths, the narrow and wide versions have an airy crocheted pattern, while the medium width has a tightly woven mosaic pattern. See previous page for silver versions.

### Mosaik Brass Bracelets

C	Small	2½" dia x 1" w
	J1697	(min 6)
D	Medium	2½" dia x 1½" w
	J1698	(min 6)
E	Large	2½" dia x 2¾" w
	J1699	(min 6)

## Kalani Collection

Beautifully irregular faceted brass beads are looped, laced and knotted on cord to form a collection of tribal-inspired necklaces, a bracelet, and dangle earrings. A brass medallion engraved with a lovely scrolled bird and flower design hangs from a long brass chain.

### Kalani

F	Twist Bead Bracelet	8" l
	J1212	(min 4)
G	Dangle Earrings	approx 3½" l
	J1211	(min 4)
H	Medallion Pendant Necklace	pendant: 1½" dia; chain: adjustable up to 34" l
	J1700	(min 3)
I	Tassel Wrap Necklace	48" l
	J1217	(min 3)

## Amazonite Knotted Necklace

Amazonite, a rare mineral, has a unique crystal structure with a luminous reflective quality. Faceted, variegated Amazonite beads are hand-knotted on a long 42-inch chocolate brown silk cord finished with a brass button closure. Wear as a single or wrap around as a double strand.

J	Amazonite Knotted Necklace	42" l
	J1178	(min 1)





G

H

J

I



## Polished Horn Jewelry

Variagated horn elevates the profile of simple hoop earrings and bangles. Shiny horn links with wood and leather for our safari chain necklace.

A	Horn Bangles Skinny S/7	2¾" dia	J355	(min 4)
B	Safari Chain Necklace	41" l	J121	(min 4)
C	Post Hoops Large	1½" dia x ¼" w	J142	(min 4)
D	Post Hoops Extra Large	2" dia x ¼" w	J211	(min 4)







### Artemis Geode Necklace & Earrings

Slices of silver-edged geodes hang from oxidized silver-plated brass chains. Predominantly light geodes are paired with a small oval chain while darker geode slices are paired with a large oval chain. Earrings with oxidized sterling silver ear wires complete the collection.

Artemis Geode			
E	Earrings Light	J1267	(min 3)
	approx 2"-2½" l x ¾"-1" w		
F	Earrings Dark	J1269	(min 3)
	approx 2"-2½" l x ¾"-1" w		
G	Necklace Light with Small Oval Chain	J1268	(min 3)
	pendant: approx 1½"-2" l x 1"-1½" w; chain: 30" l		
H	Necklace Dark with Large Oval Chain	J1270	(min 3)
	pendant: approx 1½"-2" l x 1"-1½" w; chain: 30" l		

### Crystal Boxes

Oxidized brass boxes showcase semi-precious quartz crystal drusies. These sparkling treasure boxes include a rectangular jewelry box and two ring boxes, one square and one round. Stone colors may vary and metal finishes as shown are specific to each box shape.

Crystal Boxes			
I	Jewelry	ST187	(min 1)
	approx 4½" l x 2½" w x 2½" h		
J	Square Ring	ST189	(min 1)
	approx 2" sq x 2¾" h		
K	Round Ring	ST188	(min 1)
	approx 2" dia x 2½" h		



### Sculptural Chile Wood Boxes

Three truly stunning boxes hand-carved from camachile wood comprise our Sculptural Chile Wood Box collection. Undulating curves and smooth finishes echo the irregular beauty of mouth-blown glass vases. Each box is unique by nature. Case pack includes one each of three shapes.

A Sculptural Chile Wood Box                      W470      (min 3)  
 2½" dia x 3½" h, 3¾" l x 3¼" w x 3" h, 3¼" l x 3" w x 4¾" h

### Pebble Tape Measures

Pebble-shaped tape measures are crafted from solid ebony, sycamore or laurel. Metal tape extends to 72 inches and shows both inches and centimeters. Each case pack contains two pieces of each wood type.

B Pebble Tape Measure      2½" dia x ½" h      W407      (min 6)





### Polished Horn Jewelry

Made of horn, these alluring items have an understated beauty and soft appeal. Crafted of light-colored or black horn, this casual trio of thin and delicate bangles will enhance any wrist with naturally pretty flair. The oval-cut pieces of our Oval Chain Necklace are interlaced and informally play up the natural material's unique quality and color scheme.

### Polished Horn

C	Thin Bangles S/3	2¾" dia x ⅛" w	J352	(min 4)
D	Oval Chain Necklace	34" l	J351	(min 1)
E	Teardrop Earrings	1¾" l x 1" w	J141	(min 4)
F	Long Drop Earrings	2¼" l x ¼" w	J140	(min 4)
G	Thin Bangles Black S/3	2¾" dia x ⅛" w	J133	(min 4)

## Petite Dress Forms

Unique dark brown "spalting" characterizes the grain of these milkwood pine Petite Dress Forms. Perfect for displaying jewelry, these mini dress forms come in three sizes and rest on handsome turned-wood bases.

### A Petite Dress Forms

Small W467	3¾" l x 3¼" w x 11¾" h (min 2)
Medium W468	5" l x 4¾" w x 15½" h (min 1)
Large W469	6" l x 5¾" w x 19¾" h (min 1)







B



F

### Piccolo Glass Domes

Tiny dome displays await little treasures. Low and tall wood bases support each hand-blown glass dome.

Piccolo Glass Domes

B	Short with Tall Base	4" dia x 8¾" h	GL879	(min 2)
C	Tall with Low Base	4" dia x 12½" h	GL877	(min 2)

### Antiqued Brass Display Pillars & Disks

Handsome and versatile metallic platforms add elevation and warmth to displays. Wood rounds covered with antiqued brass foil create pillars and disks in a variety of dimensions. Combine with varied materials for unexpected textural contrasts.

D	Antiqued Brass Display Pillars S/3		ME620	(min 2)
		2" dia x 2" h, 2" dia x 4" h, 2" dia x 6" h		
E	Antiqued Brass Display Disks			
	Extra Small	4" dia x 2" h	ME616	(min 2)
	Small	6" dia x 2" h	ME617	(min 2)
	Medium	8" dia x 2" h	ME618	(min 1)
	Large	10" dia x 2" h	ME619	(min 1)

### Petite Metal Jewelry Signs

Chalk memo boards are informative and playful additions to jewelry displays. Our charming metal signs ship in sets of four — two that hang, two that stand. Chalk not included.

F	Petite Metal Jewelry Signs S/4		ME430	(min 4)
		4" l x 3" h to 8" l x 6" h		



B

C

### Petite Cloches

Glass display cloches that fit securely on wooden bases inspire creative vignettes for precious specimens. Available in three sizes.

#### A Petite Cloches

Small	4" dia x 5½" h
GL1012	(min 4)
Medium	4¾" dia x 9" h
GL1013	(min 4)
Large	4¾" dia x 11¼" h
GL1014	(min 4)

A





### Washed Linen Accessory Collection

Supple linen accessories stylishly simplify everything from heading out on errands to packing for a weekend away. A three-pocket tote bag, clutch bag and jewelry roll are crafted from thick, natural woven linen that is enzyme-washed for extra softness. The tote bag features an adjustable leather shoulder strap with brass buckle, three snap-closure outer pockets, and a contrasting striped cotton lining with an interior zip pocket and a magnetic closure. A clutch bag with leather wrist loop has a brass zipper closure and an exterior zippered pocket. A jewelry roll with leather wrap closure and contrasting lining keeps jewelry organized with a zipper compartment, a leather strap for bracelets or hoops, and a second strap with separator pockets to keep necklaces from tangling.

#### Washed Linen Three-Pocket Totes

B	Indigo	18" l x 6½" w x 14½" h	TX296	(min 2)
C	Greige	18" l x 6½" w x 14½" h	TX297	(min 2)

#### Washed Linen Clutch Bags

D	Indigo	9" l x 6" w	TX298	(min 4)
E	Greige	9" l x 6" w	TX299	(min 4)

#### Washed Linen Jewelry Rolls

F	Indigo	10½" sq	TX300	(min 4)
G	Greige	10½" sq	TX301	(min 4)

### Burnished Brass Rings

Trim rings are fashioned from burnished brass wire — a wrapped knot version, and rings of twined wires in threes or fives. Rings come in case packs that include two each of sizes 6, 7 and 8.

#### Burnished Brass

H	Knot Ring	¼" w	J1521	(min 6)
I	Three Ring	¼" w	J885	(min 6)
J	Five Ring	¾" w	J886	(min 6)





## Tannar Leather Tote Bags

Sturdy and durable leather tote bags are made from buffalo leather in a warm caramel color that highlights the interesting texture of the leather. The top edge of the bag and straps are unfinished, the straps are attached with brass rivets, and the interior is unlined for a handmade artisanal look. Both bags have a zippered interior pocket.

### Tannar Leather Tote Bags

A	Small	11" l x 1½" w x 10" h
	A154	(min 1)
B	Medium	15" l x 1½" w x 12" h
	A184	(min 1)

## Brass Clothespins & Display Cable

Solid brass clothespins have a plethora of uses: they clasp signs, tags or photos on our Display Cable, the larger ones are fun paperweights on a desk, and the mini is sized to hang from our Linear Display Stands. The clothespins are made from solid brass with steel springs. Our 4-foot long braided stainless steel Display Cable has brass clamps that can be adjusted to shorten the cable; includes six mini clothespins.

### Brass Clothespins

C	Mini	¾" l x ¼" w
	ME797	(min 18)
D	Small	1¾" l x ¾" w
	ME798	(min 6)
E	Large	2½" l x ½" w
	ME799	(min 6)
F	Display Cable & Clothespins	
	cable: 4' l; clothespins ¾" l x ¼" w	
	ME203	(min 2)

## Linear Display Stands

Our Linear Display Stands have a minimalist design that puts the focus on the displays rather than the stands. Thin iron display wires are anchored in beautifully grained Indian rosewood bases that have hidden iron weights to keep the stands firmly in place.

### Linear Display Stands

G	Small	5" l x 1½" w x 7" h
	ME261	(min 2)
H	Medium	6" l x 1½" w x 10" h
	ME262	(min 2)
I	Large	15¾" l x 1¼" w x 13" h
	ME738	(min 2)
J	Wide Low	15¾" l x 1¼" w x 7" h
	ME737	(min 2)



## Ibiza Earring Collection & Brass Latch Bangles

Playful brass earrings are perfect for a night out dancing. Earrings have gold-plated brass ear wires. Brass latch bangles can be worn individually but are even nicer when stacked.

### Ibiza

#### Earrings

K	Dangling Spheres	3¼" l x ¼" w	J2073	(min 3)
L	Dangling Fish	3" l x ⅞" l	J2074	(min 3)
M	Mesh Diamond	3¾" l x 1" w	J2075	(min 3)
N	Dangling Loops	3¾" l x ⅝" w	J2076	(min 3)
O	Dangling Coin	2 ¼" l x 1" w	J2077	(min 2)
P	Brass Latch Bangles S/3	2½" dia	J1245	(min 2)







A



B



D

C

## Brass Display Pyramids, Boxes & Trays

Our Pyramid Display Boxes offer an unusual and striking option for presenting jewelry and other precious items. Smaller pyramids are sold in a set of three; the three larger sizes are sold individually. A set of five square nesting trays and three sizes of rectangular trays provide myriad display possibilities. A delightful set of mini boxes rounds out the collection. All items feature delicate brass edges; the pyramids have a clear glass base while the trays and boxes have mirrored bases.

A	Square Nesting Trays Brass S/5 4¼", 6¼", 8¼", 10¼", 12¼" sq x 1¼" h	ME807	(min 1)
B	Rectangle Trays Brass S/3 9¼", 12¼", 15¼" l x 3¼" w x 1¼" h	ME808	(min 2)
C	Mirror Boxes Brass Mini S/3 2½" l x 1¼" w x 1¾" h, 3¼" l x 2¾" w x 1¾" h, 4" l x 3½" w x 2¼" h	ME809	(min 4)
Pyramid Display Boxes Brass			
D	Small S/3 3" sq x 4" h, 4¾" sq x 6" h, 6" sq x 8" h	ME803	(min 2)
E	Medium 7½" sq x 10" h	ME804	(min 2)
F	Large 9" sq x 12" h	ME805	(min 1)
G	Jumbo* 12½" sq x 16" h	ME806	(min 1)

\* Extra shipping charges may be incurred due to the weight or size of this item.



A





G

F

E

B



A

A

B





### Mirror Boxes & Trays

These elegant vitrines are ideal for displaying jewelry. They have delicate antiqued iron edges, clear glass sides and mirrored bases that reflect light beautifully. Nine boxes and three trays allow for maximum versatility.

<b>A Mirror Boxes Antique Iron</b>			
Extra Small	3¼" cu	ME707	(min 6)
Small	4¼" cu	ME708	(min 4)
Medium	4¾" cu	ME709	(min 4)
Large	7⅞" cu	ME710	(min 2)
Extra Large	9½" cu	ME711	(min 2)
Jumbo	12" cu	ME712	(min 1)
<b>B Rectangle Trays Antique Iron S/3</b>			
	9½"-15¼" l x 3⅞" w 1⅞" h	ME996	(min 2)
<b>C Mirror Boxes Antique Iron Mini S/3</b>			
	2½"-4⅞" l x 1¾"-3⅞" w x 1¼"-2⅞" h	ME997	(min 4)

### Constellation Necklaces & Milky Way Cuff

Brilliant natural white zircon stars sparkle on cast brass discs in textured organic shapes that hang on brass chain necklaces. Three constellations represented are Cassiopeia, Andromeda and Pleiades with one of each style in the case pack. The Milky Way Cuff is equally stellar. See index for more of the Constellation Collection.

D Constellation Necklace Brass Large	J1280	(min 3)
pendant: approx 1⅞" dia; chain: 24" l		
E Milky Way Cuff Small	J1279	(min 2)
approx 2¾" dia x ⅞" w		

### Forged Iron Jewelry Stands

These well-designed display stands are made by hand of forged iron. Each piece is artfully hammered for a rustic finish and has been engineered to the perfect height for visual impact.

F Forged Iron Jewelry Stands S/4	ME604	(min 1)
9" w x 2" d x 6", 8½", 11", 13½" h		

## Brass Rod Jewelry Stands & Steel Ring Block

Our Brass Rod Jewelry Stands and Steel Ring Block celebrate an artisanal industrial aesthetic. Jewelry stands are built from precisely milled solid brass rods anchored by a milled steel base. Cutting marks on the edges of the base are left intact for visual interest but polished for smooth clean lines. Four heights of T-stands hold necklaces, bracelets and earrings; see following page for additional styles. Our sleek steel cube is a visual counterpoint to the stands; an ideal way to display and elevate a special ring.

### A Brass Rod Jewelry Stand T-Bars

Small	3¼" w x 2" d x 3" h	ME869	(min 4)
Medium	3¼" w x 2" d x 5" h	ME870	(min 4)
Large	6½" w x 2" d x 8" h	ME871	(min 2)
Extra Large	6½" w x 2" d x 10" h	ME872	(min 2)

### B Steel Ring Block 2" cu

ME873 (min 3)

## Angled Display Cases

Versatile angled brass-edged cases are the perfect showplace for jewelry or other precious items. Glass panels are framed in brass-plated iron on each case; a hinged door has a slide latch. Two sizes of cases may be oriented vertically, for use with jewelry stands, or horizontally for myriad items.

### Angled Display Cases

C Small	10½" l x 9" w x 4" h	ME998	(min 2)
D Large	14" l x 10½" w x 4" h	ME999	(min 1)

D

C







A

B

D



### Stella Suede Clutch Wallet

A splendid wallet in supple yet sturdy suede doubles as a smallish clutch. Black or tobacco suede is crafted with stylish, angled topstitched sides and a curved flap with round brass screw-in rivet closure. The interior boasts two compartments, three card slots on each side, and a brass-zippered coin purse divider.

#### A Stella Suede Clutch Wallets

Black	9" l x 4" w x ¾" d
A790	(min 2)
Tobacco	9" l x 4" w x ¾" d
A791	(min 2)





## Wall Mount Jewelry Displays & Brass Rod Jewelry Stands

Artful jewelry displays are effortless with our unique collection of industrial chic stands and wall mount displays. Polished brass rods in interesting configurations are mounted to solid precision milled steel bases on our Double T and Double Bar stands. Wall mount display pieces are highly functional with either a bar or seven pegs. Both come with brass mounting screws. Our steel ring cone and ring block are ideal for showing off beautiful rings or earrings. See previous page for additional pieces in the collection.

### Brass Rod Wall Mount Jewelry Displays

B Bar 16" w x 2" d x 1½" h  
ME874 (min 2)

C Pegs 16" w x 2" d x 1½" h  
ME875 (min 2)

### D Brass Rod Jewelry Stands Double T

Small 13" w x 2" d x 6¼" h  
ME876 (min 2)

Medium 13" w x 2" d x 10" h  
ME877 (min 2)

Large 13" w x 2" d x 14" h  
ME878 (min 2)

### E Brass Rod Jewelry Stand Double Bar Extra Large

13" w x 2" d x 17" h  
ME879 (min 2)

F Steel Ring Cone 1½" dia x 4" h  
ME964 (min 3)

G Steel Ring Block 2" cu  
ME873 (min 3)

## Drusy Post Earrings

Aqua-hued drusies in rectangle and round shapes adorn brass-set earrings with sterling silver posts in a mixed case pack of one pair each of two shapes.

H Drusy Post Earrings ¼" dia, ⅜" l x ¼" w  
J1626 (min 2)

## Angelie Earrings & Rings

These modern architectural pieces are formed by hand into asymmetrical shapes that achieve perfect aesthetic balance and wearability. Round-banded rings, triangular post earrings, and dangle earrings with angled gold-plated brass ear wires are made from delicate square brass rods. Two ring designs, one of each style in sizes 6, 7, and 8 to a case pack.

Angelie  
I Ring ⅝" w, 1" w  
J1491 (min 6)

J Post Earrings approx ⅞" l x ⅜" w  
J1492 (min 2)

K Dangle Earrings approx 2½" l x 1" w  
J1493 (min 2)





## Gear Earrings

Graphic modern hoops were inspired by vintage watch gears. Crafted from satin-finished brass; available in three styles and two wearable sizes to complement a wide variety of toggery.

Gear Earrings	
A Square Tooth Small J1759	1¾" dia (min 3)
B Square Tooth Large J1760	2¾" dia (min 3)
C Smooth Arc Small J1757	1¾" dia (min 3)
D Smooth Arc Large J1758	2¾" dia (min 3)
E Spur Small J1761	1¾" dia (min 3)
F Spur Large J1762	2¾" dia (min 3)

## Forged Brass Jewelry Stands

Handmade of solid brass, these jewelry stands in four useful heights beautifully showcase jewelry collections large or small. Rustic hand-worked hammering on each piece adds to the appeal of the grouping.

G Forged Brass Jewelry Stands S/4	9" w x 2" d x 6", 8½", 11", 13½" h
ME570	(min 1)

## Florin Mirrors

The sinuous curves of these burnished brass mirrors offer a nod to the Art Deco era. Three sizes of wall mirrors hang from fixed brass chains while a triple panel mirror can hang or stand. Round vanity mirrors in two sizes sit on hinged, curved brass bases. The five larger mirrors have linen backs; the smallest is backed in brass.

Florin Mirrors	
H Horizontal Medium FM282	15½" w x ½" d x 11¼" h (min 1)
I Horizontal Large FM283	22¼" w x ½" d x 15¾" h (min 1)
J Vertical Small FM281	7¾" w x ½" d x 11¼" h (min 2)
K Triple Panel FM284	33½" w x ½" d x 15½" h (min 1)
L Round Vanity Small FM285	3¾" dia x 2¼" d x 4" h (min 4)
M Round Vanity Large FM286	8¼" dia x 4½" d x 9¼" h (min 2)





## Gold Vermeil & Gem Collection

We set two of our most popular semi-precious stones, aqua chalcedony and prehnite, in gold vermeil in this enticing collection of earrings, rings and a necklace. Vermeil is sterling silver that has been plated with high-micron 22k gold to give it a warm finish resembling pure gold. The loveliness of the rectangular and square stones is heightened by precise faceting and simple bezels with claw settings.

### Tiny Square Facet Post Earrings

- A Prehnite gem:  $\frac{3}{8}$ " sq  
J2047 (min 2)
- B Aqua Chalcedony gem:  $\frac{3}{8}$ " sq  
J2046 (min 2)

### Rectangular Facet Dangle Earrings

- C Prehnite  $1\frac{1}{2}$ " l x  $\frac{3}{8}$ " w  
J2045 (min 2)
- D Aqua Chalcedony  $1\frac{1}{2}$ " l x  $\frac{3}{8}$ " w  
J2044 (min 2)

### Rectangular Facet Rings

(please indicate size 6, 7 or 8)

- E Prehnite  $\frac{3}{4}$ " l x  $\frac{3}{8}$ " w  
J2049-6/7/8 (min 1)
- F Aqua Chalcedony  $\frac{3}{4}$ " l x  $\frac{3}{8}$ " w  
J2048-6/7/8 (min 1)

### G Rectangular Facet Prehnite &

Aqua Chalcedony Necklace  
pendant:  $1\frac{1}{8}$ " l x  $\frac{3}{8}$ " w;  
chain adjustable 18"-20" l  
J2043 (min 1)





## Index By Item Number

Item	Product Name	Min	Page	Item	Product Name	Min	Page
A154	Tannar Leather Tote Bag Small	1	118	J381-6	Square Facet Aqua Chalcedony Ring 6	1	48
A184	Tannar Leather Tote Bag Medium	1	118	J381-7	Square Facet Aqua Chalcedony Ring 7	1	48
A790	Stella Suede Clutch Wallet Black	2	126	J381-8	Square Facet Aqua Chalcedony Ring 8	1	48
A791	Stella Suede Clutch Wallet Tobacco	2	126	J382-6	Square Facet Labradorite Ring 6	1	48
FM281	Florin Mirror Vertical Small	2	129	J382-7	Square Facet Labradorite Ring 7	1	48
FM282	Florin Mirror Horizontal Medium	1	129	J382-8	Square Facet Labradorite Ring 8	1	48
FM283	Florin Mirror Horizontal Large	1	129	J411	Square Facet Prehnite Earrings	2	48
FM284	Florin Mirror Triple Panel	1	129	J412	Hammered Brass Chain Bracelet	4	101
FM285	Florin Round Vanity Mirror Small	4	129	J413	Hammered Silver Chain Bracelet	4	37
FM286	Florin Round Vanity Mirror Large	2	129	J414	Hammered Silver Chain Necklace	2	36
GL877	Piccolo Glass Dome Tall with Low Base	2	114	J418-6	Square Facet Prehnite Ring 6	1	48
GL879	Piccolo Glass Dome Short with Tall Base	2	115	J418-7	Square Facet Prehnite Ring 7	1	48
GL1012	Petite Cloche Small	4	116	J418-8	Square Facet Prehnite Ring 8	1	48
GL1013	Petite Cloche Medium	4	116	J488	Square Facet Silver Necklace Aqua Chalcedony	1	86
GL1014	Petite Cloche Large	4	116	J489	Square Facet Silver Earrings Aqua Chalcedony	2	86
GL1030	Etruscan Glass Bottles Cerulean Blue S/7	2	84	J490-6	Square Facet Silver Ring Aqua Chalcedony 6	1	86
GL1031	Etruscan Glass Bottles Dusky Gray S/7	2	84	J490-7	Square Facet Silver Ring Aqua Chalcedony 7	1	86
HB134	Horn Ring Stand	6	104	J490-8	Square Facet Silver Ring Aqua Chalcedony 8	1	86
J121	Safari Chain Necklace	4	110	J551	Voyager Compass Necklace	2	59
J133	Polished Horn Thin Bangles Black S/3	4	113	J561	Crocheted Pyrite Bracelet	1	100
J140	Polished Horn Long Drop Earrings	4	113	J584	Maya Mini Square Bead Cuff Antique Gold	4	99
J141	Polished Horn Teardrop Earrings	4	113	J589	Maya Mini Square Bead Cuff Silver	4	35
J142	Polished Horn Post Hoops Large	4	110	J590	Maya Mini Square Bead Cuff Dark Nickel	4	35
J210	Liquid Bronze Cuff	2	101	J595	Isha Wide Silver Bracelet	4	35
J211	Polished Horn Post Hoops Extra Large	4	110	J596	Isha Wide Dark Nickel Bracelet	4	35
J215-6	Brazilian Black Agate Drusy Narrow Ring 6	1	103	J598	Aurora Knotted Bead Necklace Antique Gold	3	99
J215-7	Brazilian Black Agate Drusy Narrow Ring 7	1	103	J599	Aurora Knotted Bead Necklace Antique Silver	3	34
J215-8	Brazilian Black Agate Drusy Narrow Ring 8	1	103	J601	Bella Parasol Bead Bracelet Thin Silver	4	102
J216-6	Brazilian Black Agate Drusy Wide Ring 6	1	103	J602	Bella Parasol Bead Bracelet Thin Antique Brass	4	102
J216-7	Brazilian Black Agate Drusy Wide Ring 7	1	103	J603	Bella Parasol Bead Bracelet Wide Silver	4	102
J216-8	Brazilian Black Agate Drusy Wide Ring 8	1	103	J604	Bella Parasol Bead Bracelet Wide Antique Brass	4	102
J217-6	Brazilian Black Agate Chunky Polished Ring 6	1	103	J605	Bella Circles Bead Bracelet	4	102
J217-7	Brazilian Black Agate Chunky Polished Ring 7	1	103	J606	Bella Rectangle Bead Bracelet	4	102
J217-8	Brazilian Black Agate Chunky Polished Ring 8	1	103	J607	Bella Concentric Circle Bead Bracelet Wide	4	102
J233	Hammered Brass Nori Earrings	4	101	J608	Bella Vertical Lines Bead Bracelet	4	102
J237	Silver Filigree Leaf Earrings	6	86	J609	Bella Parasol Bead Coin Purse	2	102
J242	Hammered Brass Chain Necklace	2	101	J610	Bella Oval Bead Coin Purse	2	102
J277	Square Facet Aqua Chalcedony Earrings	2	48	J611	Bella Rectangle Bead Coin Purse	2	102
J278	Square Facet Labradorite Earrings	2	48	J619	Voyager Magnifying Lens Necklace	2	58
J320	Isha Wide Brass Bracelet	4	38	J631	Green Kyanite Jumble Earrings	2	51
J344	Gray River Double Pearl Earrings	3	105	J632	Green Kyanite Jumble Necklace	2	50
J345	Gray River Pearl Earrings	3	105	J650	Round Facet Earrings Aqua Chalcedony	2	86
J346	Gray River Pearl Multi-Strand Necklace	2	105	J695	Tiny Square Facet Earrings Labradorite	2	49
J347	Gray River Pearl Three Wrap Bracelet	1	105	J701	Brass Squares Bracelet	6	101
J348	Gray River Single Pearl Necklace	4	105	J710	Hammered Silver Varied Link Necklace	2	TS
J349	Gray River Pearl Multi-Strand Bracelet	2	105	J713	Trio Earrings	6	75
J350	Gray River Five Pearl Bracelet	4	105	J714	Trio Necklace	4	75
J351	Polished Horn Oval Chain Necklace	1	113	J715	Bar Earrings	6	75
J352	Polished Horn Thin Bangles S/3	4	112	J716	Carapace Necklace	4	75
J355	Horn Bangles Skinny S/7	4	110	J717	Squares Bracelet Silver	6	36
J363	Pyrite Long Chain with Quartz Drop	1	100	J718	Half Moon Necklace Brass	2	96
J366	Horn Link Necklace Large	1	TS	J719	Half Moon Necklace Silver	2	36

## Index By Item Number

Item	Product Name	Min	Page	Item	Product Name	Min	Page
J720	Nouveau Earrings Brass	4	51	J989	Hammered Vermeil Hoops Small	2	84
J722	Hammered Brass Round Earrings	6	51	J990	Hammered Vermeil Hoops Medium	2	84
J726	Domes Bracelet	6	96	J991	Hammered Vermeil Hoops Large	2	84
J727	Voyager Oval Locket Necklace	2	58	J992	Hammered Vermeil Hoops Extra Large	2	84
J728	Voyager Three-Strand Bracelet	4	58	J993	Hammered Silver Hoops Small	2	84
J732	Bar Earrings Silver	6	37	J994	Hammered Silver Hoops Medium	2	84
J759	White Horn Filigree Fan Earrings	3	102	J995	Hammered Silver Hoops Large	2	84
J760	Black Horn Filigree Fan Earrings	3	102	J996	Hammered Silver Hoops Extra Large	2	84
J761	White Horn Filigree Flower Earrings	3	102	J1014	Geometric Silver Rectangle Earrings	2	37
J762	Black Horn Filigree Flower Earrings	3	102	J1065	Brass Squares Earrings	4	53
J763	White Horn Filigree Clover Earrings	3	102	J1095	Turquoise Bead & Brass Pendant Necklace	1	31
J764	Black Horn Filigree Clover Earrings	3	102	J1096	Afghan Turquoise Bead Strand	3	31
J768	Labradorite Oval Necklace	1	49	J1097	Mosaic Brass Necklace	2	108
J797	Brass Buckle Cuff	3	14, 74	J1098	Mosaic Brass Bracelet	4	108
J800	Multi-Strand Bead Necklace Brass	3	96	J1100	Knotted Tiny Pearl Bracelet	4	33
J801	Multi-Strand Bead Necklace Silver	3	36	J1105	Knotted Tiny Pearl Necklace	2	33
J826	Artisan Brass Angle Bangle	6	TS	J1128	Brass Oval Earrings	4	51
J827	Helena Necklace Chocolate	4	97	J1129	Brass Angle Earrings	4	53
J828	Helena Necklace Linen	4	74	J1145-6	Herkimer Diamond Solitaire Ring 6	1	91
J830	Pallas Necklace	3	106	J1145-7	Herkimer Diamond Solitaire Ring 7	1	91
J831	Wire-Wrap Aqua Chalcedony Bracelet	3	74	J1145-8	Herkimer Diamond Solitaire Ring 8	1	91
J832	Wire-Wrap Aqua Chalcedony Earrings	4	74	J1146	Herkimer Diamond Post Earrings Small	2	91
J850	Hammered Silver Round Earrings	4	34	J1147	Herkimer Diamond Post Earrings Large	2	91
J851	Hammered Silver Leaf Earrings	4	34	J1148	Herkimer Diamond Dangle Earrings	2	91
J885	Burnished Brass Three Ring	6	117	J1151-6	Baroque Pearl Ring 6	1	90
J886	Burnished Brass Five Ring	6	117	J1151-7	Baroque Pearl Ring 7	1	90
J887	Burnished Brass Pivot Earrings	4	39	J1151-8	Baroque Pearl Ring 8	1	90
J897	Turquoise & Brass Hoops Large	2	77	J1152	Baroque Pearl Post Earrings	2	90
J898	Royston Petite Pendant Necklace	2	77	J1153	Samarra Silver Scythe Pearl Bracelet	1	90
J899	Brass Feather & Cord Necklace	3	76	J1154	Baroque Pearl Pendant Necklace	1	90
J900	Brass Feather Hoops	3	77	J1172	Liquid Jade Necklace	3	14
J902	Brass Three Feather Earrings	4	77	J1176	Moss Agate Knotted Necklace	1	50
J903	Brass Seven Feather Earrings	4	77	J1178	Amazonite Knotted Necklace	1	109
J905	Brass Seven Feather Necklace	4	76	J1194	Gold Drusy Round Earrings	2	82
J906-6	Royston Turquoise & Brass Ring 6	1	76	J1195	Gold Drusy Long Rectangle Earrings	2	82
J906-7	Royston Turquoise & Brass Ring 7	1	76	J1196	Gold Drusy Round Necklace	2	82
J906-8	Royston Turquoise & Brass Ring 8	1	76	J1197	Gold Drusy Rectangle Necklace	2	82
J907	Turquoise & Brass Hoops Small	3	77	J1211	Kalani Dangle Earrings	4	109
J908	Royston Turquoise & Brass Cuff	1	76	J1212	Kalani Twist Bead Bracelet	4	108
J909	Royston Turquoise & Brass Necklace	1	76	J1217	Kalani Tassel Wrap Necklace	3	109
J948	Bella Beaded Wide Cuff	4	107	J1236	Keepsake Tiny Hourglass Necklace	4	59
J956	Compass on Watch Fob Chain	3	61	J1237	Mini Magnifying Glass Charm Necklace	3	61
J957	Hourglass Necklace	3	61	J1238	Keepsake Telescope Necklace	3	58
J981	Hammered Oval Vermeil Hoops Small	2	85	J1239	Jaipur Cuff	1	TS
J982	Hammered Oval Vermeil Hoops Medium	2	85	J1243	Samarra Silver Scythe Earrings	2	90
J983	Hammered Oval Vermeil Hoops Large	2	85	J1244	Samarra Silver Scythe Bracelet	1	90
J984	Hammered Oval Vermeil Hoops Extra Large	2	85	J1245	Brass Latch Bangles S/3	2	119
J985	Hammered Oval Silver Hoops Small	2	85	J1246	Sottile Brass Cuff	3	28
J986	Hammered Oval Silver Hoops Medium	2	85	J1247	Leather & Brass ID Bracelet	6	15
J987	Hammered Oval Silver Hoops Large	2	85	J1251	Keepsake Magnifier Necklace	4	59
J988	Hammered Oval Silver Hoops Extra Large	2	85	J1252	Brass Tiny Bead Necklace	4	50



## Index By Item Number

Item	Product Name	Min	Page	Item	Product Name	Min	Page
J1267	Artemis Geode Earrings Light	3	111	J1419	Peapod Necklace Herkimer	3	25
J1268	Artemis Geode Necklace Light with Small Oval Chain	3	111	J1420	Cyra Brass Ring	6	71
J1269	Artemis Geode Earrings Dark	3	111	J1421	Biwa Pearl Earrings	2	70
J1270	Artemis Geode Necklace Dark with Large Oval Chain	3	111	J1422	Biwa Pearl Bracelet	1	70
J1279	Milky Way Cuff Brass Small	2	62, 123	J1423	Biwa Pearl Necklace	2	70
J1280	Constellation Necklace Brass Large	3	63, 123	J1424	Cyra Brass Earrings	4	71
J1287	Brass Petal Earrings	3	51	J1425	Cyra Brass Pendant Necklace	2	71
J1297	Burnished Brass Hoops	3	74	J1430	Golden Rutile Knotted Necklace Small	1	39
J1298	Marguerite Baroque Pearl Froth Earrings	2	32	J1431	Golden Rutile Knotted Necklace Large	1	39
J1299	Marguerite Baroque Pearl Post Earrings	2	32	J1432	Birdcage Necklace	2	25
J1306	Marguerite Baroque Pearl Lariat	1	32	J1440	Artefact Petal Bead Hoop Earrings	2	106
J1315	Liquid Turquoise & Brass Necklace	2	TS	J1442	Artefact Petal Bead & Leather Necklace	1	106
J1316	Lia Brass Chain Link Earrings	3	93	J1443	Artefact Amulet Necklace	1	107
J1317-6	Lia Brass Ring 6	2	93	J1449	Sarisang Lapis Long Multi-Strand Bead Necklace	1	97
J1317-7	Lia Brass Ring 7	2	93	J1460	Hammered Silver-Plated Teardrop Duo Earrings	4	88
J1317-8	Lia Brass Ring 8	2	93	J1461	Hammered Silver-Plated Teardrop Necklace	3	88
J1318	Lia Brass Chain Link Bracelet	3	93	J1462	Silver-Plated Brushed Wave Cuff	2	89
J1319	Lia Brass Chain Link Necklace	2	93	J1463	Silver-Plated Three Feather Earrings	4	89
J1327	Crystal Point Single Earrings	4	83	J1464	Silver-Plated Seven Feather Earrings	4	89
J1328	Crystal Point Drop Earrings	2	83	J1465	Silver-Plated Three Feather Necklace	3	89
J1329	Crystal Point Large Drop & Pyrite Pendant Necklace	1	83	J1466	Silver-Plated Seven Feather Necklace	3	89
J1330	Crystal Point Multi Necklace	1	83	J1467	Silver-Plated Buckle Cuff	3	88
J1331	Crystal Point Drop Necklace	2	83	J1468	Silver-Plated Latch Bangles S/2	2	89
J1346	Cyra Rice Pearl Earrings	3	71	J1472	Athena Geode Earrings	3	44
J1347	Cyra Rice Pearl Bracelet	2	71	J1473	Athena Geode Necklace	3	44
J1348	Cyra Rice Pearl Pendant	3	71	J1479	Olympia Gray Pearl Earrings	3	37
J1354	Willa Elliptical Earrings	3	14	J1481	Olympia Gray Pearl Necklace	2	37
J1355	Willa Elliptical Necklace	2	15	J1484	Herkimer Crystal Vial Necklace	2	45
J1358-6	Willa Stackable Brass Rings S/3 6	2	14	J1491	Angelic Ring	6	127
J1358-7	Willa Stackable Brass Rings S/3 7	2	14	J1492	Angelic Post Earrings	2	127
J1358-8	Willa Stackable Brass Rings S/3 8	2	14	J1493	Angelic Dangle Earrings	2	127
J1361	Annie Jumbo Hoop Earrings	3	15	J1521	Burnished Brass Knot Ring	6	117
J1381	Rondo Brass Bracelet	3	92	J1524-6	Pyrite Cage Ring 6	1	61
J1382	Mossy Aquamarine Knotted Necklace Small	1	43	J1524-7	Pyrite Cage Ring 7	1	61
J1383	Mossy Aquamarine Knotted Necklace Large	1	43	J1524-8	Pyrite Cage Ring 8	1	61
J1384-6	Milky Way Ring Brass 6	1	62	J1543	Challie Equestrian Bracelet	3	40
J1384-7	Milky Way Ring Brass 7	1	62	J1544	Challie Rectangular Link Bracelet	3	41
J1384-8	Milky Way Ring Brass 8	1	62	J1547	Tulum Ring Brass	6	30
J1385	Milky Way Cuff Brass Medium	1	62	J1550	Pyrite Abacus Hoop Earrings	1	100
J1386	Milky Way Cuff Brass Large	1	62	J1551	Pyrite Abacus Hoop Pendant Necklace	1	100
J1387	Constellation Necklace Brass Small	3	63	J1555	Diamond Pavé Bangle	1	TS
J1393	Constellation Necklace Silver-Plated Large	3	87	J1560	Forty Diamond Slice Necklace	1	68
J1394	Milky Way Cuff Silver-Plated Small	2	86	J1572	Herkimer Chain Necklace	1	25
J1395	Napali Blue Kyanite Earrings	2	52	J1578	Antler Necklace	2	40
J1396	Napali Blue Kyanite Necklace	2	52	J1579-6	Black Onyx & Brass Ring 6	1	41
J1401	Neela Lapis Faceted Plate Bracelet	1	96	J1579-7	Black Onyx & Brass Ring 7	1	41
J1402	Neela Lapis Liquid Bead Necklace	2	96	J1579-8	Black Onyx & Brass Ring 8	1	41
J1403	Neela Lapis Pendant Necklace	1	96	J1594	Challie Horseshoe Earrings	3	40
J1404	Brass Lace Earrings	3	97	J1595	Challie Round Link Bracelet	3	40
J1411	Tiny Dots Stick Earrings	4	TS	J1596	Challie Necklace	2	40
J1417	Peapod Earrings Herkimer	2	25	J1597	Challie Horsetail Key Ring	2	40

## Index By Item Number

Item	Product Name	Min	Page	Item	Product Name	Min	Page
J1598	Hammered Gold-Plated Stacking Ring	9	73	J1664	Mosaik Silver Bracelet Medium	6	106
J1601	Kyan Post Earrings	3	55	J1665	Mosaik Silver Bracelet Large	6	106
J1602	Kyan Ladder Earrings	3	55	J1666	Tulum Ring Silver	6	106
J1603	Kyan Ladder Bracelet	2	55	J1671	Crystal Point & Geode Lariat	2	83
J1604	Kyan Ladder Necklace	2	55	J1672	Peapod Earrings Gold-Plated Pyrite	2	82
J1610	Izmir Serpent's Tooth Bracelet	3	54	J1673	Peapod Earrings Midnight Blue Spinel	2	82
J1612	Theia Crystal Cuff	1	19	J1674	Crystal Point Post Earrings	3	83
J1615-6	Aurora Crystal Ring White 6	1	18	J1675	Izmir Ladder Bracelet	3	54
J1615-7	Aurora Crystal Ring White 7	1	18	J1676	Izmir Bead & Tassel Necklace	3	54
J1615-8	Aurora Crystal Ring White 8	1	18	J1677	Izmir Jumbo Teardrop Bead Necklace	2	54
J1617-6	Aurora Crystal Ring Lavender 6	1	18	J1678	African Trade Bead & Brass Necklace	1	54
J1617-7	Aurora Crystal Ring Lavender 7	1	18	J1679	Izmir Bead & Tassel Bracelet	3	54
J1617-8	Aurora Crystal Ring Lavender 8	1	18	J1680	Quill Short Earrings	3	41
J1619	Aurora Crystal Earrings White	1	18	J1681	Quill Long Earrings	3	41
J1621	Aurora Crystal Earrings Lavender	1	18	J1682	Quill Necklace	2	41
J1622	Aurora Crystal Necklace White	1	18	J1686	Heirloom Brass Ring	9	46, 95
J1624	Aurora Crystal Necklace Lavender	1	18	J1687	Heirloom Brass Oval Link Bracelet	3	47
J1625	Luna Brass Long Necklace	2	19	J1688	Heirloom Brass Bangle	3	47
J1626	Drusy Post Earrings	2	127	J1689	Garden Quartz Pendant Necklace	2	94
J1627	Luna Brass Double Earrings	3	19	J1690	Garden Quartz Lariat	1	94
J1631	Crystal Honeycomb Earrings	2	80	J1691	Heirloom Brass Stick Post Earrings	4	95
J1632	Crystal Honeycomb Choker	1	80	J1692	Crescent Chain Earrings	4	95
J1633	Crystal Honeycomb Necklace	1	81	J1693	Heirloom Brass Oval Link Earrings	4	95
J1634	Brass Honeycomb Stacking Rings S/3	3	80	J1694	Heirloom Brass Cuff	3	95
J1635	Brass Honeycomb Hex Hoops Small	2	81	J1695	Heirloom Brass Oval Link Chain Necklace	2	95
J1636	Brass Honeycomb Hex Hoops Large	2	81	J1696	Heirloom Brass Rectangular Link Chain Necklace	2	94
J1637	Brass Honeycomb Cluster Earrings	2	81	J1697	Mosaik Brass Bracelet Small	6	108
J1638	Brass Honeycomb Bangles S/3	3	80	J1698	Mosaik Brass Bracelet Medium	6	108
J1639	Brass Honeycomb Charm Necklace	3	81	J1699	Mosaik Brass Bracelet Large	6	108
J1640	Brass Honeycomb Long Necklace	2	81	J1700	Kalani Medallion Pendant Necklace	3	109
J1642-6	Anatolia Ring 6	1	10	J1717	Turquoise & Brass Bead Necklace	1	31
J1642-7	Anatolia Ring 7	1	10	J1721	Constellation Post Earrings Ursa Minor	2	63
J1642-8	Anatolia Ring 8	1	10	J1724	Constellation Necklace Ursa Major	2	63
J1645	Anatolia Choker	1	10	J1736	Stone & Sapphire Knotted Necklace	1	89
J1651-6	Tabasco Tiny Geode Stacking Ring 6	1	73	J1740	Tiny Square Facet Aqua Chalcedony Earrings	2	49
J1651-7	Tabasco Tiny Geode Stacking Ring 7	1	73	J1741	Tiny Square Facet Moonstone Earrings	2	49
J1651-8	Tabasco Tiny Geode Stacking Ring 8	1	73	J1744	Long Loop Teardrop Facet Aqua Chalcedony Earrings	2	49
J1652-6	Tabasco Large Geode Ring 6	1	73	J1745	Long Loop Teardrop Facet Moonstone Earrings	2	49
J1652-7	Tabasco Large Geode Ring 7	1	73	J1747	Long Loop Teardrop Facet Labradorite Earrings	2	49
J1652-8	Tabasco Large Geode Ring 8	1	73	J1748-6	Square Facet Moonstone Ring 6	1	48
J1653	Tabasco Geode Post Earrings	2	73	J1748-7	Square Facet Moonstone Ring 7	1	48
J1654	Tabasco Geode Single Drop Earrings	2	73	J1748-8	Square Facet Moonstone Ring 8	1	48
J1655	Tabasco Geode Double Drop Earrings	1	73	J1749	Square Facet Moonstone Earrings	2	48
J1656	Tabasco Single Geode Cuff	1	73	J1750	Oval Moonstone Necklace	1	49
J1657	Tabasco Double Geode Cuff	1	73	J1757	Gear Smooth Arc Earrings Small	3	128
J1658	Tabasco Tiny Geode Pendant Necklace	1	72	J1758	Gear Smooth Arc Earrings Large	3	128
J1659	Tabasco Large Geode Pendant Necklace	1	72	J1759	Gear Square Tooth Earrings Small	3	128
J1660	Mosaik Antique Silver Bracelet Small	6	107	J1760	Gear Square Tooth Earrings Large	3	128
J1661	Mosaik Antique Silver Bracelet Medium	6	107	J1761	Gear Spur Earrings Small	3	128
J1662	Mosaik Antique Silver Bracelet Large	6	107	J1762	Gear Spur Earrings Large	3	128
J1663	Mosaik Silver Bracelet Small	6	106	J1764	Brass Keepsake Locket Necklace	3	61



## Index By Item Number

Item	Product Name	Min	Page	Item	Product Name	Min	Page
J1765	Bird Charm Necklace	3	61	J1815	Caillie Circles Hoop	2	42
J1766	Brass Feather Earrings	3	60	J1818	Bolinas Brass Pod Earrings	2	79
J1767	Feather Bell Jar Necklace Small	2	60	J1819	Caillie Ripple Earrings	2	42
J1768	Feather Bell Jar Necklace Large	2	60	J1820	Bolinas Brass Leaf Earrings	2	79
J1769	Feather Oval Frame Necklace	2	60	J1821	Bolinas Brass Cuff	2	78
J1770	Feather Rectangular Frame Necklace	2	60	J1822	Caillie Wave Cuff Small	2	42
J1771	Oval Aqua Chalcedony Necklace	1	49	J1824	Caillie Wave Cuff Large	2	42
J1772	Peapod Earrings Lapis	2	97	J1827	Bolinas Knotted Bracelet	6	78
J1775	Indra Bib Necklace Silver	4	34	J1828	Bolinas Agate Toggle Necklace	1	79
J1776	Indra Bracelet Silver	8	35	J1831	Caillie Necklace	2	42
J1777	Indra Bracelet Dark Nickel	8	35	J1838	Bolinas Brass Saucer Earrings	2	79
J1779	Lyanna Nailhead Cuff	3	91	J1840	Bolinas Brass & Cord Necklace	2	79
J1780	Lyanna Quartz Crystal Cuff	3	91	J1841-6	Bolinas Agate Ring 6	1	42
J1781-6	Lyanna Single Crystal Ring 6	1	91	J1841-7	Bolinas Agate Ring 7	1	42
J1781-7	Lyanna Single Crystal Ring 7	1	91	J1841-8	Bolinas Agate Ring 8	1	42
J1781-8	Lyanna Single Crystal Ring 8	1	91	J1843	Tara Chrysoprase Ring	1	99
J1782-6	Lyanna Two Crystal Ring 6	1	91	J1844	Tara Chrysoprase Earrings	1	99
J1782-7	Lyanna Two Crystal Ring 7	1	91	J1845	Tara Chrysoprase Pendant Necklace	1	98
J1782-8	Lyanna Two Crystal Ring 8	1	91	J1846	Tara Chrysoprase Cuff	1	99
J1783-6	Lyanna White Zircon Ring 6	1	91	J1847	Indra Three-Strand Necklace	3	98
J1783-7	Lyanna White Zircon Ring 7	1	91	J1848	Indra Bib Necklace Brass	3	98
J1783-8	Lyanna White Zircon Ring 8	1	91	J1849	Indra Bracelet Brass & Cord	6	99
J1784	Peapod Earrings Pearl	2	92	J1850	Indra Brass Bracelet	8	99
J1785	Peapod Necklace Pearl	2	92	J1851	Indra Brass Hoops Large	2	98
J1786	Peapod Earrings Turquoise	2	92	J1852	Indra Brass Hoops Small	3	98
J1787	Peapod Necklace Turquoise	2	92	J1853	Herkimer Crystal Bangle	4	44
J1788	Leather & Bead Bolo	3	92	J1854	Herkimer & Drusy Cuff	1	45
J1789	Tulum Turquoise Bracelet	1	30	J1855	Herkimer & Drusy Ring	2	45
J1790-6	Tulum Turquoise Ring 6	1	30	J1856	Herkimer Crystal Tiny Geode Slice Lariat	2	45
J1790-7	Tulum Turquoise Ring 7	1	30	J1857	Herkimer Crystal Clip Lariat	2	45
J1790-8	Tulum Turquoise Ring 8	1	30	J1858	Herkimer Crystal Knotted Necklace	1	44
J1791	Tulum Turquoise Earrings	3	31	J1859	Constellation Necklace Silver-Plated Small	3	87
J1792	Marcella Cluster Cuff	1	47	J1861	Milky Way Cuff Silver-Plated Medium	1	87
J1793	Marcella Small Cuff	2	47	J1862	Milky Way Cuff Silver-Plated Large	1	87
J1794-6	Marcella Ring 6	1	47	J1863	Isha Narrow Dark Nickel Bracelet	6	35
J1794-7	Marcella Ring 7	1	47	J1864	Isha Narrow Silver Bracelet	6	35
J1794-8	Marcella Ring 8	1	47	J1865	Maya Large Bead Dark Nickel Bracelet	6	35
J1795	Marcella Post Earrings	3	46	J1866	Maya Large Bead Silver Bracelet	6	35
J1796	Marcella Cluster Pendant Necklace	2	46	J1884-6	Sigri Bronze Ring 6	3	27
J1797	Tiny Pearl Necklace	2	46	J1884-7	Sigri Bronze Ring 7	3	27
J1800	Keepsake Lucky Penny Necklace	3	58	J1884-8	Sigri Bronze Ring 8	3	27
J1801	Voyager Long Whistle Necklace	3	58	J1889	Sigri Bronze Cuff	1	26
J1802	Voyager Short Whistle Necklace	3	58	J1890	Juna Necklace	3	28
J1803	Voyager Round Locket Necklace	2	59	J1891	Knotted Textured Bead Necklace	2	29
J1807	Bahia Stud Earrings	2	TS	J1892	Juna Bracelet Thin	3	29
J1808	Bahia Necklace	1	TS	J1893	Juna Bracelet Medium	3	29
J1810	Bahia Double Drop Earrings	1	TS	J1894	Juna Bracelet Wide	3	28
J1811-6	Bahia Ring 6	1	TS	J1895	Brass Crescent Earrings	3	28
J1811-7	Bahia Ring 7	1	TS	J1896	Brass Disc Chain Necklace	3	29
J1811-8	Bahia Ring 8	1	TS	J1897	Knotted Blue Cord Beaded Necklace	2	28
J1814	Caillie Circles Bracelet	2	42	J1898	Knotted Gray Cord Beaded Necklace	2	29

## Index By Item Number

Item	Product Name	Min	Page	Item	Product Name	Min	Page
J1899	Knotted Coin Bib Necklace	2	28	J1960-M	Signet Necklace M	1	67
J1900	Peapod Necklace Pyrite	2	56	J1960-N	Signet Necklace N	1	67
J1901	Peapod Earrings Pyrite	2	56	J1960-O	Signet Necklace O	1	67
J1902	Peapod Necklace White Silverite	2	56	J1960-P	Signet Necklace P	1	67
J1903	Peapod Earrings White Silverite	2	56	J1960-Q	Signet Necklace Q	1	67
J1904	Peapod Necklace Labradorite	2	56	J1960-R	Signet Necklace R	1	67
J1905	Peapod Earrings Labradorite	2	56	J1960-S	Signet Necklace S	1	67
J1906	Rondelle Earrings Pyrite	2	56	J1960-SET	Signet Necklaces S/12	1	67
J1907	Rondelle Earrings White Silverite	2	56	J1960-T	Signet Necklace T	1	67
J1908	Rondelle Earrings Labradorite	2	56	J1960-U	Signet Necklace U	1	67
J1909	Mystic Stone Long Chain & Bead Necklace	1	57	J1960-V	Signet Necklace V	1	67
J1910	Silverite Choker Dove Gray	1	57	J1960-W	Signet Necklace W	1	67
J1911	Silverite Briolette Pendant Necklace	1	57	J1960-X	Signet Necklace X	1	67
J1912	Silverite Briolette Earrings	1	56	J1960-Y	Signet Necklace Y	1	67
J1913	Mystic Stone Long Dangle Bead Earrings	2	56	J1960-Z	Signet Necklace Z	1	67
J1919	Mila Blue Drusy Pendant Necklace Large	2	26	J1963	Svelte Pavé Cuff	1	69
J1920	Mila Blue Drusy Post Earrings	3	26	J1964	Svelte Pavé Necklace	1	69
J1921-6	Mila Blue Drusy Ring 6	2	27	J1965	Svelte Pavé Square Post Earrings	1	69
J1921-7	Mila Blue Drusy Ring 7	2	27	J1966	Svelte Pavé Bar Post Earrings	1	69
J1921-8	Mila Blue Drusy Ring 8	2	27	J1967-6	Svelte Pavé Ring Ten Stone Band 6	1	69
J1926	Hammered Bronze Rectangle Earrings	2	26	J1967-7	Svelte Pavé Ring Ten Stone Band 7	1	69
J1927	Hammered Bronze Angle Earrings	2	26	J1967-8	Svelte Pavé Ring Ten Stone Band 8	1	69
J1928	Baby Ball Bracelet	4	53	J1968-6	Svelte Pavé Ring Five Stone Band 6	1	69
J1929	Napali Blue Kyanite Pendant Necklace	2	52	J1968-7	Svelte Pavé Ring Five Stone Band 7	1	69
J1933	Ajana Brass Hoop & Leather Earrings	3	15	J1968-8	Svelte Pavé Ring Five Stone Band 8	1	69
J1934	Ajana Brass Hoop & Leather Necklace	2	TS	J1969-6	Svelte Pavé Ring Five Stone Vertical 6	1	69
J1943	Anda Brass & Wood Earrings	3	65	J1969-7	Svelte Pavé Ring Five Stone Vertical 7	1	69
J1944	Anda Brass & Wood Necklace	1	65	J1969-8	Svelte Pavé Ring Five Stone Vertical 8	1	69
J1945	Anda Brass Tab Hoops Small	3	65	J1970	Talisman Feather Earrings	3	39
J1946	Anda Brass Tab Hoops Medium	3	65	J1971	Talisman Feather Necklace	3	39
J1947	Anda Brass Tab Hoops Large	3	65	J1972	Talisman Horsetail Earrings Black	3	38
J1948	Anda Brass Long Necklace	2	65	J1973	Talisman Horsetail Earrings White	3	38
J1955	Albion Cuff	2	24	J1974	Talisman Horsetail Pendant Necklace Black	2	38
J1956	Albion Necklace	2	24	J1975	Talisman Horsetail Pendant Necklace White	2	38
J1957-6	Gold Bar Rectangle Ring 6	2	67	J1976	Talisman Antler Necklace	1	38
J1957-7	Gold Bar Rectangle Ring 7	2	67	J1977	Tamalpais Leather & Brass Tab Earrings	3	64
J1957-8	Gold Bar Rectangle Ring 8	2	67	J1978	Tamalpais Leather Lariat	2	64
J1958	Gold Bar Post Earrings	8	67	J1979	Tamalpais Leather Spur Necklace	3	64
J1959	Gold Bar Adjustable Ring	6	67	J1980	Tamalpais Leather Tassel Earrings	4	64
J1960-A	Signet Necklace A	1	67	J1981	Arta Brass Choker	2	4
J1960-B	Signet Necklace B	1	67	J1982	Arta Brass Bracelet	2	4
J1960-C	Signet Necklace C	1	67	J1983	Arta Brass Cuff	2	4, 12
J1960-D	Signet Necklace D	1	67	J1984	Arta Brass Narrow Cuff	3	4
J1960-E	Signet Necklace E	1	67	J1985	Arta Brass Long Earrings	3	4
J1960-F	Signet Necklace F	1	67	J1986	Arta Brass Stacking Rings S/2	6	4
J1960-G	Signet Necklace G	1	67	J1987	Sabara Tourmaline Gold-Filled Earrings	1	5
J1960-H	Signet Necklace H	1	67	J1988	Sabara Tourmaline Gold-Filled Necklace	1	5
J1960-I	Signet Necklace I	1	67	J1989	Karana Etched Brass Cuff	1	30
J1960-J	Signet Necklace J	1	67	J1990	Gold Dholki Earrings	2	30
J1960-K	Signet Necklace K	1	67	J1991	Brass Lace Triple Earrings	3	97
J1960-L	Signet Necklace L	1	67	J1992	Estrella Turquoise Bead Chain Necklace	2	22



## Index By Item Number

Item	Product Name	Min	Page	Item	Product Name	Min	Page
J1993	Estrella Turquoise Pendant Necklace	2	23	J2034	Hammered Bronze Latch Bangles	6	27
J1994	Estrella Turquoise Latch Bracelet	2	22	J2035	Hammered Bronze Post Earrings	4	26
J1995	Star Turquoise Earrings	3	23	J2036	Mila Blue Drusy Necklace Small	2	26
J1996	Star Pendant Necklace	3	23	J2037	Aqua Chalcedony & Prehnite Drop Earrings	1	48
J1997-6	Estrella Turquoise Ring 6	2	22	J2038	Chrysoprase Cube Pendant Necklace	2	66
J1997-7	Estrella Turquoise Ring 7	2	22	J2039	Chrysoprase Cube Post Earrings	2	66
J1997-8	Estrella Turquoise Ring 8	2	22	J2040-6	Chrysoprase Cube Ring 6	1	66
J1998	Estrella Turquoise Dangle Earrings	2	22	J2040-7	Chrysoprase Cube Ring 7	1	66
J1999	Estrella Turquoise Post Earrings	3	22	J2040-8	Chrysoprase Cube Ring 8	1	66
J2000	Estrella Turquoise Droplet Necklace	1	23	J2042-SET	Cipher Necklaces S/12	1	66
J2001	Estrella Turquoise Hoops Small	2	23	J2042-A	Cipher Necklace A	1	66
J2002	Estrella Turquoise Hoops Large	2	23	J2042-B	Cipher Necklace B	1	66
J2003	Braided Brass Bangle	3	16	J2042-C	Cipher Necklace C	1	66
J2004	Braided Brass Ring	6	16	J2042-D	Cipher Necklace D	1	66
J2005-6	Anora Kunzite Ring 6	1	17	J2042-E	Cipher Necklace E	1	66
J2005-7	Anora Kunzite Ring 7	1	17	J2042-F	Cipher Necklace F	1	66
J2005-8	Anora Kunzite Ring 8	1	17	J2042-G	Cipher Necklace G	1	66
J2006	Anora Kunzite Pendant Necklace	1	17	J2042-H	Cipher Necklace H	1	66
J2007	Anora Kunzite Bar Necklace	1	17	J2042-I	Cipher Necklace I	1	66
J2008	Anora Kunzite Earrings	1	17	J2042-J	Cipher Necklace J	1	66
J2009	Anora Tourmaline Crystal Earrings	1	17	J2042-K	Cipher Necklace K	1	66
J2010	Anora Tiny Sapphire Bracelet	1	16	J2042-L	Cipher Necklace L	1	66
J2011	Anora Tiny Sapphire Necklace	1	16	J2042-M	Cipher Necklace M	1	66
J2012	Baroque Pearl Drop Necklace	2	33	J2042-N	Cipher Necklace N	1	66
J2013	Brass Circles Post Earrings	6	32	J2042-O	Cipher Necklace O	1	66
J2014	Freshwater Double Pearl Cuff	2	33	J2042-P	Cipher Necklace P	1	66
J2015	Freshwater Double Pearl Ring	3	33	J2042-Q	Cipher Necklace Q	1	66
J2016	Freshwater Pearl Bolo	2	33	J2042-R	Cipher Necklace R	1	66
J2017-6	Mikayla Coil Ring 6	1	11	J2042-S	Cipher Necklace S	1	66
J2017-7	Mikayla Coil Ring 7	1	11	J2042-T	Cipher Necklace T	1	66
J2017-8	Mikayla Coil Ring 8	1	11	J2042-U	Cipher Necklace U	1	66
J2018	Mikayla Cuff	2	10	J2042-V	Cipher Necklace V	1	66
J2019	Mikayla Dagger & Loop Lariat	2	11	J2042-W	Cipher Necklace W	1	66
J2020	Mikayla Dagger Pendant Necklace	2	10	J2042-X	Cipher Necklace X	1	66
J2021	Mikayla Dagger Post Earrings	2	10	J2042-Y	Cipher Necklace Y	1	66
J2022	Mikayla Loop & Chain Earrings	2	11	J2042-Z	Cipher Necklace Z	1	66
J2023	Mikayla Loop & Dagger Earrings	2	11	J2043	Rect. Facet Prehnite & Aqua Chalcedony Necklace	1	130
J2024	Brass Quill Earrings	3	24	J2044	Rect. Facet Dangle Earrings Aqua Chalcedony	2	130
J2025	Omega Necklace	3	8	J2045	Rect. Facet Dangle Earrings Prehnite	2	130
J2026	Alpha Necklace	3	8	J2046	Tiny Square Facet Post Earrings Aqua Chalcedony	2	130
J2027	Delta Necklace	3	8	J2047	Tiny Square Facet Post Earrings Prehnite	2	130
J2028	Tiny Zircon Post Earrings Gold	6	9	J2048-6	Rectangular Facet Ring Aqua Chalcedony 6	1	130
J2029	Tiny Zircon Post Earrings Silver	6	9	J2048-7	Rectangular Facet Ring Aqua Chalcedony 7	1	130
J2030-6	Stacking Shapes Ring Gold 6	10	9	J2048-8	Rectangular Facet Ring Aqua Chalcedony 8	1	130
J2030-7	Stacking Shapes Ring Gold 7	10	9	J2049-6	Rectangular Facet Ring Prehnite 6	1	130
J2030-8	Stacking Shapes Ring Gold 8	10	9	J2049-7	Rectangular Facet Ring Prehnite 7	1	130
J2031-6	Stacking Shapes Ring Silver 6	10	9	J2049-8	Rectangular Facet Ring Prehnite 8	1	130
J2031-7	Stacking Shapes Ring Silver 7	10	9	J2050	Figur Gold & Silver Oval Earrings	2	20
J2031-8	Stacking Shapes Ring Silver 8	10	9	J2051	Figur Loop Hoops Small	2	20
J2032	Tiny Zircon Necklace Gold	6	9	J2052	Figur Loop Hoops Large	2	20
J2033	Tiny Zircon Necklace Silver	6	9	J2053	Figur Swirl Hoops	2	20

## Index By Item Number

Item	Product Name	Min	Page	Item	Product Name	Min	Page
J2054	Figur Twist Hoops	2	20	ME804	Pyramid Display Box Brass Medium	2	121
J2055	Figur Big G Hoops	3	21	ME805	Pyramid Display Box Brass Large	1	121
J2056	Figur Diamond Hoops	3	21	ME806	Pyramid Display Box Brass Jumbo	1	121
J2057	Figur Gold & Silver Angle Earrings	2	21	ME807	Square Nesting Trays Brass S/5	1	120
J2058	Figur Gold & Silver Round Earrings	2	21	ME808	Rectangle Trays Brass S/3	2	120
J2059	Figur Hex Hoops	3	21	ME809	Mirror Boxes Brass Mini S/3	4	120
J2060	Silver Shapes Post Earrings	4	7	ME869	Brass Rod Jewelry Stand T-Bar Small	4	125
J2061	Mini Hoops Gold-Filled	6	7	ME870	Brass Rod Jewelry Stand T-Bar Medium	4	125
J2062	Mini Hoops Sterling Silver	6	7	ME871	Brass Rod Jewelry Stand T-Bar Large	2	125
J2063	Veldi Post Earrings	4	7	ME872	Brass Rod Jewelry Stand T-Bar Extra Large	2	125
J2064-6	Veldi Cube Ring 6	1	7	ME873	Steel Ring Block	3	125, 127
J2064-7	Veldi Cube Ring 7	1	7	ME874	Brass Rod Wall Mount Jewelry Display Bar	2	126
J2064-8	Veldi Cube Ring 8	1	7	ME875	Brass Rod Wall Mount Jewelry Display Pegs	2	126
J2065	Katarina Kyanite Chain Necklace	1	13	ME876	Brass Rod Jewelry Stand Double T Small	2	126
J2066	Katarina Kyanite Pendant Necklace	1	13	ME877	Brass Rod Jewelry Stand Double T Medium	2	126
J2067	Katarina Kyanite Dangle Earrings	1	13	ME878	Brass Rod Jewelry Stand Double T Large	2	126
J2068	Katarina Kyanite Post Earrings	2	13	ME879	Brass Rod Jewelry Stand Double Bar Extra Large	2	126
J2069-6	Katarina Kyanite Ring 6	1	13	ME964	Steel Ring Cone	3	127
J2069-7	Katarina Kyanite Ring 7	1	13	ME996	Rectangle Trays Antique Iron S/3	2	122
J2069-8	Katarina Kyanite Ring 8	1	13	ME997	Mirror Boxes Antique Iron Mini S/3	4	123
J2070	Barra Post Earrings Long	1	13	ME998	Angled Display Case Small	2	124
J2071	Barra Post Earrings Wide	1	13	ME999	Angled Display Case Large	1	124
J2072	Albion Lariat	2	24	ST107	Pearlized Ammonite	12	TS
J2073	Ibiza Dangling Spheres Earrings	3	119	ST147	Amethyst Drusy Flower Small	6	TS
J2074	Ibiza Dangling Fish Earrings	3	119	ST187	Crystal Jewelry Box	1	111
J2075	Ibiza Mesh Diamond Earrings	3	119	ST188	Crystal Ring Box Round	1	111
J2076	Ibiza Dangling Loops Earrings	3	119	ST189	Crystal Ring Box Square	1	111
J2077	Ibiza Dangling Coin Earrings	2	119	ST233	Crystal Geode Pair Mini	12	91
J2078	Omega Bracelet Silver	3	TS	ST252	Herkimer Diamond in Stone Matrix	1	TS
J2079	Omega Bracelet Gold	3	TS	ST261	Quartz Perfume Bottle Diamond	2	104
ME203	Display Cable & Clothespins	2	118	ST262	Quartz Perfume Bottle Oval	2	104
ME261	Linear Display Stand Small	2	119	ST263	Quartz Perfume Bottle Flask	2	104
ME262	Linear Display Stand Medium	2	119	TX249	Shibori Indigo Stitch Scarf	2	53
ME430	Petite Metal Jewelry Signs S/4	4	115	TX250	Shibori Indigo Ombre Scarf	2	53
ME570	Forged Brass Jewelry Stands S/4	1	128	TX296	Washed Linen Three-Pocket Tote Indigo	2	116
ME604	Forged Iron Jewelry Stands S/4	1	123	TX297	Washed Linen Three-Pocket Tote Greige	2	116
ME616	Antiqued Brass Display Disk Extra Small	2	114	TX298	Washed Linen Clutch Bag Indigo	4	117
ME617	Antiqued Brass Display Disk Small	2	115	TX299	Washed Linen Clutch Bag Greige	4	117
ME618	Antiqued Brass Display Disk Medium	1	115	TX300	Washed Linen Jewelry Roll Indigo	4	117
ME619	Antiqued Brass Display Disk Large	1	114	TX301	Washed Linen Jewelry Roll Greige	4	117
ME620	Antiqued Brass Display Pillars S/3	2	114	W407	Pebble Tape Measure	6	112
ME707	Mirror Box Antique Iron Extra Small	6	122	W467	Petite Dress Form Small	2	115
ME708	Mirror Box Antique Iron Small	4	122	W468	Petite Dress Form Medium	1	115
ME709	Mirror Box Antique Iron Medium	4	122	W469	Petite Dress Form Large	1	114
ME710	Mirror Box Antique Iron Large	2	122	W470	Sculptural Chile Wood Box	3	112
ME711	Mirror Box Antique Iron Extra Large	2	122	W564	La Dama Mannequin	1	TS
ME712	Mirror Box Antique Iron Jumbo	1	122	W655	Ventana Jewelry Box Small	4	104
ME737	Linear Display Stand Wide Low	2	119	W656	Ventana Jewelry Box Medium	3	104
ME738	Linear Display Stand Large	2	119	W657	Ventana Jewelry Box Large	2	104
ME797	Brass Clothespin Mini	18	118				
ME798	Brass Clothespin Small	6	118				
ME799	Brass Clothespin Large	6	118				
ME803	Pyramid Display Boxes Brass Small S/3	2	120				

TS: Tradeshow Only Item



## Index By Product Name & Category

Product Name	Page	Product Name	Page	Product Name	Page
<b>A</b>		Bella Beaded Collection	107	Bracelets, Bangle	
Accessories		Bella Bracelet Collection	102	Artisan Brass Angle Bangle	TS
Challie Collection	40	Bella Coin Purse Collection	102	Braided Brass Collection	16
Stella Suede Clutch Wallets	126	Bird Charm Necklace	61	Brass Honeycomb Collection	80
Afghan Turquoise Bead Strands	31	Birdcage Necklace	25	Brass Latch Bangles	119
African Trade Bead & Brass Necklace	54	Biwa Pearl Bracelet	70	Diamond Pavé Bangle	TS
Ajana Collection	15, TS	Biwa Pearl Earrings	70	Hammered Bronze Collection	27
Albion Collection	24	Biwa Pearl Necklace	70	Heirloom Brass Collection	47
Albion Lariat	24	Black Onyx & Brass Rings	41	Herkimer Crystal Collection	44
Alpha Necklace	8	Bolinas Agate Collection	42, 79	Horn Bracelets, Bangles & Cuffs	110, 112-113
Amazonite Knotted Necklace	109	Bolinas Brass Collection	78-79	Silver-Plated Latch Bangles	89
Amethyst Drusy Flower	TS	Boxes		Bracelets, Beaded	
Anatolia Collection	10	Crystal Jewelry Box	111	Anora Tiny Sapphire Collection	16
Anda Collection	65	Crystal Ring Boxes	111	Lia Brass Chain Link Bracelet	93
Angelie Dangle Earrings	127	Sculptural Chile Wood Box	112	Bracelets, Chain	
Angelie Post Earrings	127	Ventana Jewelry Boxes	104	Hammered Brass Chain Collection	101
Angelie Ring	127	Bracelets		Hammered Silver Chain Collection	37
Angled Display Cases	124	Arta Brass Collection	4	Voyager Collection	58
Annie Jumbo Hoop Earrings	15	Baby Ball Bracelet	53	Bracelets, Cuffs	
Anora Kunzite Collection	17	Bella Beaded Collection	107	Albion Collection	24
Anora Tiny Sapphire Collection	16	Bella Bracelet Collection	102	Arta Brass Bracelet Collection	4, 12
Anora Tourmaline Crystal Collection	17	Biwa Pearl Bracelet	70	Arta Brass Collection	4
Antiqued Brass Display Collection	114-115	Brass Buckle Cuff	14, 74	Bolinas Brass Collection	78
Antler Necklace	40	Brass Squares Bracelet	101	Caille Collection	42
Aqua Chalcedony & Prehnite Drop Earrings	48	Caille Collection	42	Freshwater Double Pearl Collection	33
Arta Brass Bracelet Collection	4, 12	Challie Collection	40	Heirloom Brass Collection	95
Arta Brass Collection	4	Challie Equestrian Bracelet	40	Herkimer & Drusy Collection	45
Artifact Amulet Necklace	107	Challie Link Bracelets	41	Jaipur Cuff	TS
Artifact Petal Bead & Leather Necklace	106	Crocheted Pyrite Bracelet	100	Karana Etched Brass Cuff	30
Artifact Petal Bead Hoop Earrings	106	Cyra Rice Pearl Bracelet	71	Liquid Bronze Cuff	101
Artemis Geode Earrings Dark	111	Domes Bracelet	96	Lyanna Collection	91
Artemis Geode Earrings Light	111	Estrella Turquoise Collection	22	Marcella Collection	47
Artemis Geode Necklaces	111	Heirloom Brass Collection	47	Maya Cuffs Brass & Gold	99
Artisan Brass Angle Bangle	TS	Indra Collection	35, 99	Maya Cuffs Dark Nickel & Silver	35
Athena Geode Earrings	44	Isha Bracelets	35, 38	Mikayla Coil Collection	10
Athena Geode Necklace	44	Kyan Collection	55	Milky Way Collection	62, 123
Aurora Crystal Lavender Collection	18	Leather & Brass ID Bracelet	15	Milky Way Cuffs	87
Aurora Crystal White Collection	18	Maya Bracelets	35	Milky Way Cuffs Silver-Plated	86
Aurora Knotted Bead Necklace Antique Gold	99	Mosaik Antique Silver Collection	107	Royston Turquoise & Brass Collection	76
Aurora Knotted Bead Necklace Silver	34	Mosaik Brass Collection	108	Sigri Bronze Collection	26
		Mosaik Silver Collection	106	Silver-Plated Brushed Wave Cuff	89
<b>B</b>		Neela Lapis Faceted Plate Bracelet	96	Sottile Brass Cuff	28
Baby Ball Bracelet	53	Omega Bracelets	TS	Svelte Pavé Collection	69
Bags	116, 118	Rondo Brass Bracelet	92	Tabasco Geode Collection	73
Bahia Collection	TS	Samarra Silver Scythe Bracelet	90	Tara Chrysoprase Collection	99
Bar Earrings Brass	75	Samarra Silver Scythe Pearl Bracelet	90	Theia Crystal Collection	19
Bar Earrings Silver	37	Silver-Plated Buckle Cuff	88	Bracelets, Knotted/Macramé	
Baroque Pearl Drop Necklace	33	Squares Bracelet Silver	36	Bolinas Brass Collection	78
Baroque Pearl Pendant Necklace	90	Tulum Turquoise Collections	30	Gray River Pearl Collection	105
Baroque Pearl Post Earrings	90	Wire-Wrap Aqua Chalcedony Collection	74	Indra Collection	99
Baroque Pearl Rings	90			Izmir Collection	54
Barra Post Earrings	13				

## Index By Product Name & Category

Product Name	Page	Product Name	Page	Product Name	Page
Juna Collection	28-29	Constellation Necklaces Silver-Plated	87	Anora Tourmaline Crystal Collection	17
Kalani Twist Bead Bracelet	108	Crescent Chain Earrings	95	Aqua Chalcedony & Prehnite Drop Earrings	48
Knotted Tiny Pearl Collection	33	Crocheted Pyrite Bracelet	100	Arta Brass Collection	4
Mosaic Brass Collection	108	Crystal Geode	91	Artemis Geode Earrings Dark	111
Braided Brass Collection	16	Crystal Honeycomb Collection	80-81	Artemis Geode Earrings Light	111
Brass Angle Earrings	53	Crystal Jewelry Box	111	Athena Geode Earrings	44
Brass Buckle Cuff	14, 74	Crystal Point Collection	83	Aurora Crystal Lavender Collection	18
Brass Circles Post Earrings	32	Crystal Point Drop Earrings	83	Aurora Crystal White Collection	18
Brass Clothespins	118	Crystal Point Drop Necklace	83	Bahia Collection	TS
Brass Crescent Earrings	28	Crystal Point Large Drop & Pyrite Pendant Necklace	83	Bar Earrings Brass	75
Brass Disc Chain Necklace	29	Crystal Point Multi Necklace	83	Bar Earrings Silver	37
Brass Feather & Cord Necklace	76	Crystal Point Single Earrings	83	Biwa Pearl Earrings	70
Brass Feather Collection	76-77	Crystal Ring Boxes	111	Bolinas Brass Collection	79
Brass Feather Earrings	60	Cyra Brass Earrings	71	Brass Angle Earrings	53
Brass Feather Hoops	77	Cyra Brass Pendant Necklace	71	Brass Feather Collection	77
Brass Honeycomb Collection	80-81	Cyra Brass Ring	71	Brass Feather Earrings	60
Brass Honeycomb Hex Collection	81	Cyra Rice Pearl Bracelet	71	Brass Honeycomb Collection	81
Brass Keepsake Collection	61	Cyra Rice Pearl Earrings	71	Brass Lace Earrings	97
Brass Knot Ring	117	Cyra Rice Pearl Pendant	71	Brass Lace Triple Earrings	97
Brass Lace Earrings	97	<b>D</b>		Brass Oval Earrings	51
Brass Lace Triple Earrings	97	Delta Necklace	8	Brass Petal Earrings	51
Brass Latch Bangles	119	Diamond Pavé Bangle	TS	Brass Quill Earrings	24
Brass Oval Earrings	51	Display Accessories		Brass Squares Earrings	53
Brass Petal Earrings	51	Angled Display Cases	124	Caillie Collection	42
Brass Quill Earrings	24	Antiqued Brass Display Collection	114-115	Challie Collection	40
Brass Rod Jewelry Stand Double Bar	126	Etruscan Glass Bottles	84	Crescent Chain Earrings	95
Brass Rod Jewelry Stands Double T's	126	Horn Ring Stand	104	Crystal Honeycomb Collection	80
Brass Rod Jewelry Stands T-Bars	125	Jewelry Display Collections	115	Crystal Point Drop Earrings	83
Brass Rod Wall Mount Jewelry Display Bar	126	La Dama Mannequin	TS	Crystal Point Single Earrings	83
Brass Rod Wall Mount Jewelry Display Hooks	126	Linear Display Stands	119	Cyra Brass Earrings	71
Brass Squares Bracelet	101	Mirror Boxes Antique Iron	122-123	Cyra Rice Pearl Earrings	71
Brass Squares Earrings	53	Mirror Boxes Brass Mini	120	Estrella Turquoise Collection	22
Brass Tiny Bead Necklace	50	Petite Cloches	116	Geometric Silver Rectangle Collection	37
Brazilian Black Agate Ring Collection	103	Petite Dress Forms	114-115	Gold Dholki Earrings	30
Burnished Brass Collection	39, 117	Petite Metal Jewelry Signs	115	Gold Drusy Long Rectangle Earrings	82
Burnished Brass Hoops	74	Piccolo Glass Dome Collection	114-115	Gold Drusy Round Earrings	82
<b>C</b>		Pyramid Display Boxes Brass	120-121	Gray River Pearl Collection	105
Caillie Collection	42	Rectangle Trays Antique Iron	122	Green Kyanite Jumble Collection	51
Carapace Necklace	75	Rectangle Trays Brass	120	Hammered Brass Round Earrings	51
Challie Collection	40	Square Nesting Trays Brass	120	Hammered Silver Collection	34
Challie Equestrian Bracelet	40	Steel Ring Block	125, 127	Hammered Silver-Plated Teardrop Duo Earrings	88
Challie Link Bracelets	41	Steel Ring Cone	127	Heirloom Brass Collection	95
Chrysoprase Cube Collection	66	Display Cable & Clothespins	118	Herkimer Diamond Dangle Earrings	91
Cipher Necklaces	66	Domes Bracelet	96	Horn Earrings	113
Clips		Drusy Post Earrings	127	Horn Filigree Earring Collection	102
Brass Clothespins	118	<b>E</b>		Ibiza Dangling Coin Earrings	119
Display Cable & Clothespins	118	Earrings, Dangles		Ibiza Dangling Earrings Collection	119
Compass on Watch Fob Chain	61	Ajana Collection	15	Isis Brass Squares Earrings	53
Constellation Collection	63, 87, 123	Anda Collection	65	Kalani Dangle Earrings	109
Constellation Necklaces Brass	63, 123	Angelie Dangle Earrings	127	Katarina Kyanite Collection	13
		Anora Kunzite Collection	17	Kyan Collection	55



## Index By Product Name & Category

Product Name	Page	Product Name	Page	Product Name	Page
Lia Brass Chain Link Earrings	93	Indra Collection	98	Forty Diamond Slice Necklace	68
Long Loop Teardrop Collection	49	Mikayla Coil Collection	11	Freshwater Double Pearl Collection	33
Luna Brass Collection	19	Mini Hoops Collection	7	Freshwater Pearl Bolo	33
Marguerite Baroque Pearl Froth Earrings	32	Oval Silver Hoops	85	<b>G</b>	
Mystic Stone Collection	56	Oval Vermeil Hoops	85	Garden Quartz Collection	94
Napali Blue Kyanite Earrings	52	Samarra Silver Scythe Earrings	90	Gear Collection	128
Nori Earrings Brass	101	Silver Hoops	84	Geometric Silver Rectangle Collection	37
Nouveau Earrings Brass	51	Turquoise & Brass Collection	77	Gold Bar Collection	67
Olympia Gray Pearl Earrings	37	Turquoise & Brass Hoops	77	Gold Dholki Earrings	30
Peapod Earrings	25, 56, 82, 92, 97	Vermeil Hoops	84	Gold Drusy Long Rectangle Earrings	82
Pyrite Abacus Earrings	100	Willa Elliptical Earrings	14	Gold Drusy Rectangle Necklace	82
Quill Collection	41	Earrings, Post		Gold Drusy Round Earrings	82
Rectangular Facet Collection	130	Angelie Post Earrings	127	Gold Drusy Round Necklace	82
Rondelle Earrings	56	Bahia Collection	TS	Golden Rutile Knotted Necklaces	39
Round Facet Collection	86	Baroque Pearl Post Earrings	90	Gray River Pearl Collection	105
Sabara Tourmaline Collection	5	Barra Post Earrings	13	Green Kyanite Jumble Collection	50-51
Silver Filigree Collection	86	Brass Circles Post Earrings	32	<b>H</b>	
Silverite Briolette Collection	56	Chrysoprase Cube Collection	66	Half Moon Necklace Brass	96
Silver-Plated Seven Feather Earrings	89	Constellation Collection	63	Half Moon Necklace Silver	36
Silver-Plated Three Feather Earrings	89	Crystal Point Collection	83	Hammered Brass Chain Collection	101
Sq. Facet Aqua Chalcedony Silver Collection	86	Drusy Post Earrings	127	Hammered Brass Round Earrings	51
Sq. Facet Aqua Chalcedony Vermeil Collection	48	Estrella Turquoise Collection	22	Hammered Bronze Collection	26-27
Sq. Facet Labradorite Vermeil Collection	48	Gold Bar Collection	67	Hammered Bronze Earrings	26
Sq. Facet Moonstone Collection	48	Hammered Bronze Collection	26	Hammered Gold-Plated Stacking Ring	73
Sq. Facet Prehnite Vermeil Collection	48	Heirloom Brass Collection	95	Hammered Silver Chain Collection	36-37
Star Turquoise Earrings	23	Herkimer Diamond Post Earrings Large	91	Hammered Silver Collection	34
Tabasco Geode Collection	73	Herkimer Diamond Post Earrings Small	91	Hammered Silver Varied Chain Necklace	TS
Talisman Collection	38-39	Katarina Kyanite Collection	13	Hammered Silver-Plated Teardrop Duo Earrings	88
Tamalpais Collection	64	Kyan Collection	55	Hammered Silver-Plated Teardrop Necklace	88
Tara Chrysoprase Collection	99	Marcella Collection	46	Heirloom Brass Collection	46-47, 94-95,
Tiny Dots Stick Earrings	TS	Marguerite Baroque Pearl Post Earrings	32	Helena Collection	74, 97
Tiny Square Facet Collection	49	Mikayla Coil Collection	10	Herkimer & Drusy Collection	45
Tiny Square Facet Earrings	49	Mila Collection	26	Herkimer Chain Necklace	25
Trio Collection	75	Silver Shapes Earrings	7	Herkimer Crystal Collection	44-45
Tulum Turquoise Collections	31	Svelte Pavé Collection	69	Herkimer Crystal Vial Necklace	45
Wire-Wrap Aqua Chalcedony Collection	74	Tabasco Geode Collection	73	Herkimer Diamond Dangle Earrings	91
Earrings, Hoops		Tiny Square Facet Post Earrings	130	Herkimer Diamond in Stone Matrix	TS
Anda Collection	65	Tiny Zircon Collection	9	Herkimer Diamond Post Earrings Large	91
Annie Jumbo Hoop Earrings	15	Veldi Cube Collection	7	Herkimer Diamond Post Earrings Small	91
Artefact Petal Bead Hoop Earrings	106	Estrella Turquoise Collection	22-23	Herkimer Diamond Solitaire Rings	91
Brass Crescent Earrings	28	Etruscan Glass Bottles	84	Horn Bracelets, Bangles & Cuffs	110, 112-113
Brass Feather Hoops	77	<b>F</b>		Horn Earrings	110, 113
Brass Honeycomb Hex Collection	81	Feather Bell Jar Collection	60	Horn Filigree Earring Collection	102
Burnished Brass Collection	39	Feather Oval Frame Necklace	60	Horn Necklaces	113, TS
Burnished Brass Hoops	74	Feather Rectangular Frame Necklace	60	Horn Ring Stand	104
Caillie Collection	42	Figur Earrings Collection	20-21	Hourglass Necklace	61
Estrella Turquoise Collection	23	Florin Mirrors	129	<b>I</b>	
Figur Earrings Collection	20-21	Florin Round Vanity Mirrors	129	Ibiza Dangling Coin Earrings	119
Gear Collection	128	Forged Brass Jewelry Stands	128	Ibiza Dangling Earrings Collection	119
Hammered Bronze Earrings	26	Forged Jewelry Stands	123	Indra Collection	34-35, 98-99
Horn Earrings	110				

## Index By Product Name & Category

Product Name	Page	Product Name	Page	Product Name	Page
Isha Bracelets	35, 38	<b>L</b>		Necklaces	
Izmir Collection	54	La Dama Mannequin	TS	Bolinas Brass Collection	79
<b>J</b>		Labradorite Oval Necklace	49	Caillie Collection	42
Jaipur Cuff	TS	Leather & Bead Bolo	92	Mystic Stone Collection	57
Jewelry Display		Leather & Brass ID Bracelet	15	Tiny Pearl Necklace	46
Amethyst Drusy Flower	TS	Lia Brass Chain Link Bracelet	93	Necklaces, Beaded	
Angled Display Cases	124	Lia Brass Chain Link Earrings	93	Afghan Turquoise Bead Strands	31
Antiqued Brass Display Collection	114-115	Lia Brass Chain Link Necklace	93	African Trade Bead & Brass Necklace	54
Brass Clothespins	118	Lia Brass Rings	93	Liquid Jade Necklace	14
Display Cable & Clothespins	118	Linear Display Stands	119	Liquid Turquoise & Brass Necklace	TS
Etruscan Glass Bottles	84	Liquid Bronze Cuff	101	Neela Lapis Liquid Bead Necklace	96
Horn Ring Stand	104	Liquid Jade Necklace	14	Sarisang Lapis Long Multi-Strand Bead Necklace	97
Jewelry Display Collections	115	Liquid Turquoise & Brass Necklace	TS	Silverite Choker Dove Gray	57
La Dama Mannequin	TS	Long Loop Teardrop Collection	49	Turquoise & Brass Collection	31
Linear Display Stands	119	Luna Brass Collection	19	Necklaces, Beaded Chain	
Mirror Boxes Antique Iron	122-123	Lyanna Collection	91	Brass Tiny Bead Necklace	50
Mirror Boxes Brass Mini	120	<b>M</b>		Herkimer Chain Necklace	25
Petite Cloches	116	Marcella Collection	46-47	Olympia Gray Pearl Necklace	37
Petite Dress Forms	114-115	Marguerite Baroque Pearl Froth Earrings	32	Pyrite Long Chain with Quartz Drop	100
Petite Metal Jewelry Signs	115	Marguerite Baroque Pearl Lariat	32	Turquoise Bead & Brass Pendant Necklace	31
Piccolo Glass Dome Collection	114-115	Marguerite Baroque Pearl Post Earrings	32	Necklaces, Bib	
Pyramid Display Boxes Brass	120-121	Maya Bracelets	35	Anda Collection	65
Rectangle Trays Antique Iron	122	Maya Cuffs Brass & Gold	99	Artefact Petal Bead & Leather Necklace	106
Rectangle Trays Brass	120	Maya Cuffs Dark Nickel & Silver	35	Brass Feather & Cord Necklace	76
Square Nesting Trays Brass	120	Mikayla Collection	10-11	Crystal Point Multi Necklace	83
Steel Ring Block	125, 127	Mila Blue Drusy Necklace	26	Estrella Turquoise Collection	23
Steel Ring Cone	127	Mila Collection	26-27	Green Kyanite Jumble Collection	50
Jewelry Display Collections	115	Milky Way Collection	62, 123	Half Moon Necklace Brass	96
Jewelry Roll, Washed Linen	117	Milky Way Cuffs	87	Half Moon Necklace Silver	36
Jewelry Stands		Milky Way Cuffs Silver-Plated	86	Hammered Silver-Plated Teardrop Necklace	88
Brass Rod Jewelry Stand Double Bar	126	Mineral Specimens		Helena Collection	74, 97
Brass Rod Jewelry Stands Double T's	126	Amethyst Drusy Flower	TS	Indra Collection	34, 98
Brass Rod Jewelry Stands T-Bars	125	Crystal Geode	91	Katarina Kyanite Collection	13
Brass Rod Wall Mount Jewelry Display Bar	126	Mini Hoops Collection	7	Multi-Strand Bead Necklace Brass	96
Brass Rod Wall Mount Jewelry Display Hooks	126	Mini Magnifying Glass Charm Necklace	61	Multi-Strand Bead Necklace Silver	36
Forged Brass Jewelry Stands	128	Mirror Boxes Antique Iron	122-123	Napali Blue Kyanite Necklace	52
Forged Jewelry Stands	123	Mirror Boxes Brass Mini	120	Necklaces, Bolo	
Juna Collection	28-29	Mirrors, Florin	129	Freshwater Pearl Bolo	33
<b>K</b>		Mosaic Brass Collection	108	Leather & Bead Bolo	92
Kalani Collection	109	Mosaik Antique Silver Collection	107	Necklaces, Chain	
Kalani Dangle Earrings	109	Mosaik Brass Collection	108	Ajana Collection	TS
Kalani Tassel Wrap Necklace	109	Mosaik Silver Collection	106	Anda Collection	65
Kalani Twist Bead Bracelet	108	Moss Agate Knotted Necklace	50	Brass Disc Chain Necklace	29
Karana Etched Brass Cuff	30	Mossy Aquamarine Knotted Necklaces	43	Brass Honeycomb Collection	81
Katarina Kyanite Collection	13	Multi-Strand Bead Necklace Brass	96	Challie Collection	40
Keepsake Magnifier Necklace	59	Multi-Strand Bead Necklace Silver	36	Forty Diamond Slice Necklace	68
Keepsake Necklaces	58-59	Mystic Stone Collection	56-57	Hammered Brass Chain Collection	101
Key Ring, Challie Collection	40	<b>N</b>		Hammered Silver Chain Collection	36
Knotted Necklaces	28-29	Napali Blue Kyanite Collection	52	Hammered Silver Varied Chain Necklace	TS
Knotted Tiny Pearl Collection	33	Napali Blue Kyanite Earrings	52	Heirloom Brass Collection	94-95
Kyan Collection	55	Napali Blue Kyanite Necklace	52	Horn Necklaces	113, TS
				Indra Collection	98



## Index By Product Name & Category

Product Name	Page	Product Name	Page	Product Name	Page
Lia Brass Chain Link Necklace	93	Kyan Collection	55	Cipher Necklaces	66
Luna Brass Collection	19	Labradorite Oval Necklace	49	Constellation Silver Collection	87
Quill Collection	41	Marcella Collection	46	Cyra Brass Pendant Necklace	71
Safari Chain Necklace	110	Mila Blue Drusy Necklace	26	Delta Necklace	8
Necklaces, Charm Pendant		Mila Collection	26	Izmir Collection	54
Bird Charm Necklace	61	Napali Blue Kyanite Collection	52	Kalani Collection	109
Brass Keepsake Collection	61	Neela Lapis Pendant Necklace	96	Keepsake Necklaces	58
Compass on Watch Fob Chain	61	Oval Aqua Chalcedony Necklace	49	Mikayla Coil Collection	10
Feather Bell Jar Collection	60	Oval Moonstone Necklace	49	Omega Necklace	8
Feather Oval Frame Necklace	60	Peapod Collection	25, 56, 92	Signet Necklaces	67
Feather Rectangular Frame Necklace	60	Pyrite Abacus Pendant Necklace	100	Silver-Plated Seven Feather Necklace	89
Herkimer Crystal Vial Necklace	45	Rectangular Facet Collection	130	Silver-Plated Three Feather Necklace	89
Hourglass Necklace	61	Royston Collection	77	Star Pendant Necklace	23
Keepsake Magnifier Necklace	59	Royston Turquoise & Brass Collection	76	Tamalpais Collection	64
Keepsake Necklaces	58-59	Silverite Briolette Collection	57	Trio Collection	75
Mini Magnifying Glass Charm Necklace	61	Square Facet Aqua Chalcedony Silver Collection	86	Voyager Necklaces	58-59
Voyager Collection	58-59	Svelte Pavé Collection	69	Willa Elliptical Necklace	15
Necklaces, Choker		Tabasco Geode Collection	72	Necklaces, Pendant	
Anatolia Collection	10	Tara Chrysoprase Collection	98	Antler Necklace	40
Arta Brass Collection	4	Tiny Zircon Collection	9	Talisman Collection	38-39
Crystal Honeycomb Collection	80	Necklaces, Knotted/Macramé		Necklaces, Tassel	54
Necklaces, Gemstone Necklace		Amazonite Knotted Necklace	109	Neela Lapis Faceted Plate Bracelet	96
Anora Tiny Sapphire Collection	16	Aurora Knotted Bead Necklace Antique Gold	99	Neela Lapis Liquid Bead Necklace	96
Estrella Turquoise Collection	22	Aurora Knotted Bead Necklace Silver	34	Neela Lapis Pendant Necklace	96
Sabara Tourmaline Collection	5	Golden Rutile Knotted Necklaces	39	Nori Earrings Brass	101
Necklaces, Gemstone Pendant		Gray River Pearl Collection	105	Nouveau Earrings Brass	51
Albion Collection	24	Herkimer Crystal Collection	44	<b>O</b>	
Anora Kunzite Collection	17	Juna Collection	28	Olympia Gray Pearl Earrings	37
Artemis Geode Necklaces	111	Kalani Tassel Wrap Necklace	109	Olympia Gray Pearl Necklace	37
Athena Geode Necklace	44	Knotted Necklaces	28-29	Omega Bracelets	TS
Aurora Crystal Lavender Collection	18	Knotted Tiny Pearl Collection	33	Omega Necklace	8
Aurora Crystal White Collection	18	Mosaic Brass Collection	108	Oval Aqua Chalcedony Necklace	49
Bahia Collection	TS	Moss Agate Knotted Necklace	50	Oval Moonstone Necklace	49
Baroque Pearl Drop Necklace	33	Mossy Aquamarine Knotted Necklaces	43	Oval Silver Hoops	85
Baroque Pearl Pendant Necklace	90	Pallas Necklace	106	Oval Vermeil Hoops	85
Birdcage Necklace	25	Stone & Sapphire Knotted Necklace	89	<b>P</b>	
Biwa Pearl Necklace	70	Necklaces, Lariat		Pallas Necklace	106
Bolinas Agate Collection	79	Albion Lariat	24	Peapod Earrings	25, 56, 82, 92, 97
Chrysoprase Cube Collection	66	Crystal Point Collection	83	Peapod Necklaces	25, 56, 92
Constellation Necklaces Brass	63, 123	Garden Quartz Collection	94	Pearlized Shells	TS
Constellation Necklaces Silver-Plated	87	Herkimer Crystal Collection	45	Pebble Tape Measure	112
Crystal Honeycomb Collection	81	Marguerite Baroque Pearl Lariat	32	Perfume Bottles, Quartz	104
Crystal Point Drop Necklace	83	Mikayla Coil Collection	11	Petite Cloches	116
Crystal Point Lg. Drop & Pyrite Pendant Necklace	83	Tamalpais Collection	64	Petite Dress Forms	114-115
Cyra Rice Pearl Pendant	71	Necklaces, Locketts	58	Petite Metal Jewelry Signs	115
Estrella Turquoise Collection	23	Necklaces, Metal Pendant		Piccolo Glass Dome Collection	114-115
Garden Quartz Collection	94	Alpha Necklace	8	Pyramid Display Boxes Brass	120-121
Gold Drusy Rectangle Necklace	82	Artefact Amulet Necklace	107	Pyrite Abacus Earrings	100
Gold Drusy Round Necklace	82	Brass Feather Collection	76	Pyrite Abacus Pendant Necklace	100
Gray River Pearl Collection	105	Brass Honeycomb Collection	81	Pyrite Cage Rings	61
Katarina Kyanite Collection	13	Carapace Necklace	75	Pyrite Long Chain with Quartz Drop	100

## Index By Product Name & Category

Product Name	Page	Product Name	Page	Product Name	Page
<b>Q</b>		Mikayla Coil Collection	11	<b>T</b>	
Quartz Perfume Bottles	104	Sigri Bronze Collection	27	Tabasco Geode Collection	72-73
Quill Collection	41	Stacking Shapes Rings	9	Talisman Collection	38-39
<b>R</b>		Tulum Ring	30	Tamalpais Collection	64
Rectangle Trays Antique Iron	122	Tulum Ring Silver	106	Tannar Leather Tote Bags	118
Rectangle Trays Brass	120	Veldi Cube Collection	7	Tape Measure, Pebble	112
Rectangular Facet Collection	130	Willa Stackable Brass Rings	14	Tara Chrysoprase Collection	98-99
Rings, Beaded Rings Lia	93	Rondelle Earrings	56	Theia Crystal Collection	19
Rings, Gemstone		Rondo Brass Bracelet	92	Tiny Dots Stick Earrings	TS
Anatolia Collection	10	Round Facet Collection	86	Tiny Pearl Necklace	46
Anora Kunzite Collection	17	Royston Collection	77	Tiny Square Facet Collection	49
Aurora Crystal Lavender Collection	18	Royston Turquoise & Brass Collection	76	Tiny Square Facet Earrings	49
Aurora Crystal White Collection	18	<b>S</b>		Tiny Square Facet Post Earrings	130
Bahia Collection	TS	Sabara Tourmaline Collection	5	Tiny Zircon Collection	9
Baroque Pearl Rings	90	Safari Chain Necklace	110	Totes	
Black Onyx & Brass Rings	41	Samarra Silver Scythe Bracelet	90	Tannar Leather Tote Bags	118
Bolinas Agate Collection	42	Samarra Silver Scythe Earrings	90	Washed Linen Three-Pocket Totes	116
Brazilian Black Agate Ring Collection	103	Samarra Silver Scythe Pearl Bracelet	90	Trio Collection	75
Chrysoprase Cube Collection	66	Sarisang Lapis Long Multi-Strand Bead Necklace	97	Tulum Ring	30
Estrella Turquoise Collection	22	Scarves, Shibori Indigo	53	Tulum Ring Silver	106
Freshwater Double Pearl Collection	33	Sculptural Chile Wood Box	112	Tulum Turquoise Collections	30-31
Herkimer & Drusy Collection	45	Signet Necklaces	67	Turquoise & Brass Collection	31, 77
Herkimer Diamond Solitaire Rings	91	Sigri Bronze Collection	26-27	Turquoise & Brass Hoops	77
Katarina Kyanite Collection	13	Silver Filigree Collection	86	Turquoise Bead & Brass Pendant Necklace	31
Lyanna Collection	91	Silver Hoops	84	<b>V</b>	
Marcella Collection	47	Silver Shapes Earrings	7	Veldi Cube Collection	7
Mila Collection	27	Silverite Briquette Collection	56-57	Ventana Jewelry Boxes	104
Pyrite Cage Rings	61	Silverite Choker Dove Gray	57	Vermeil Hoops	84
Rectangular Facet Collection	130	Silver-Plated Brushed Wave Cuff	89	Voyager Collection	58-59
Royston Turquoise & Brass Collection	76	Silver-Plated Buckle Cuff	88	Voyager Necklaces	58-59
Sq. Facet Aqua Chalcedony Silver Collection	86	Silver-Plated Latch Bangles	89	<b>W</b>	
Sq. Facet Aqua Chalcedony Vermeil Collection	48	Silver-Plated Seven Feather Earrings	89	Wallets, Stella Suede Clutch	126
Sq. Facet Labradorite Vermeil Collection	48	Silver-Plated Seven Feather Necklace	89	Wallets/Coin Purses	
Sq. Facet Moonstone Collection	48	Silver-Plated Three Feather Earrings	89	Bella Coin Purse Collection	102
Sq. Facet Prehnite Vermeil Collection	48	Silver-Plated Three Feather Necklace	89	Washed Linen Clutch Bags	117
Svelte Pavé Collection	69	Sottile Brass Cuff	28	Washed Linen Clutch Bags	117
Tabasco Geode Collection	73	Square Facet Aqua Chalcedony Silver Collection	86	Washed Linen Jewelry Rolls	117
Tara Chrysoprase Collection	99	Square Facet Aqua Chalcedony Vermeil Collection	48	Washed Linen Three-Pocket Totes	116
Tulum Turquoise Collections	30	Square Facet Labradorite Vermeil Collection	48	Willa Elliptical Earrings	14
Rings, Inlay Gemstone Milky Way	62	Square Facet Moonstone Collection	48	Willa Elliptical Necklace	15
Rings, Metal Ring		Square Facet Prehnite Vermeil Collection	48	Willa Stackable Brass Rings	14
Angelle Ring	127	Square Nesting Trays Brass	120	Wire-Wrap Aqua Chalcedony Collection	74
Arta Brass Collection	4	Squares Bracelet Silver	36		
Braided Brass Collection	16	Stacking Shapes Rings	9	TS: Tradeshow Only Item	
Brass Honeycomb Collection	80	Star Pendant Necklace	23		
Brass Knot Ring	117	Star Turquoise Earrings	23		
Burnished Brass Collection	117	Steel Ring Block	125, 127		
Cyra Brass Ring	71	Steel Ring Cone	127		
Gold Bar Collection	67	Stella Suede Clutch Wallets	126		
Hammered Gold-Plated Stacking Ring	73	Stone & Sapphire Knotted Necklace	89		
Heirloom Brass Collection	46, 95	Svelte Pavé Collection	69		





200 Gate Five Road, No. 116 Sausalito, California 94965  
 tel. 415 339 9500 fax. 415 339 9400 www.roostco.com

Date \_\_\_\_\_

Buyer \_\_\_\_\_

Signature \_\_\_\_\_

PO# \_\_\_\_\_

Requested Ship Date \_\_\_\_\_

Opening Order     Reorder

Business Name \_\_\_\_\_

Bill to Address \_\_\_\_\_  
 \_\_\_\_\_  
 \_\_\_\_\_

Telephone \_\_\_\_\_

Facsimile \_\_\_\_\_

E-mail \_\_\_\_\_

Ship to Address (no drop shipments) \_\_\_\_\_  
 \_\_\_\_\_  
 \_\_\_\_\_

Residential Delivery  Yes     No

Truck Shipments Accepted  Yes     No

Ship to Telephone \_\_\_\_\_

Card # \_\_\_\_\_

Expiration Date \_\_\_\_\_

Cardholder's Name \_\_\_\_\_

Card Billing Address \_\_\_\_\_  
 \_\_\_\_\_  
 \_\_\_\_\_

Minimum opening order is \$500 (\$350 for jewelry only); reorder \$300 (\$200 for jewelry only). Items must be ordered in case pack quantities. A New Customer Information Form is required to open an account.

Item #	Quantity	Description	Item Price	Extension

Total \_\_\_\_\_

Special/Shipping Instructions \_\_\_\_\_



200 Gate Five Road, No. 116 Sausalito, California 94965

tel. 415 339 9500 fax. 415 339 9400 www.roostco.com

Date \_\_\_\_\_

Buyer \_\_\_\_\_

Signature \_\_\_\_\_

PO# \_\_\_\_\_

Requested Ship Date \_\_\_\_\_

Opening Order     Reorder \_\_\_\_\_

Business Name \_\_\_\_\_

Bill to Address \_\_\_\_\_

\_\_\_\_\_

\_\_\_\_\_

Telephone \_\_\_\_\_

Facsimile \_\_\_\_\_

E-mail \_\_\_\_\_

Ship to Address (no drop shipments) \_\_\_\_\_

\_\_\_\_\_

\_\_\_\_\_

Residential Delivery  Yes     No \_\_\_\_\_

Truck Shipments Accepted  Yes     No \_\_\_\_\_

Ship to Telephone \_\_\_\_\_

Card # \_\_\_\_\_

Expiration Date \_\_\_\_\_

Cardholder's Name \_\_\_\_\_

Card Billing Address \_\_\_\_\_

\_\_\_\_\_

\_\_\_\_\_

\_\_\_\_\_

Minimum opening order is \$500 (\$350 for jewelry only); reorder \$300 (\$200 for jewelry only). Items must be ordered in case pack quantities. A New Customer Information Form is required to open an account.

Item #	Quantity	Description	Item Price	Extension

Total \_\_\_\_\_

Special/Shipping Instructions \_\_\_\_\_





200 Gate Five Road, No. 116 Sausalito, California 94965  
 tel. 415 339 9500 fax. 415 339 9400 www.roostco.com

Date \_\_\_\_\_

Buyer \_\_\_\_\_

Signature \_\_\_\_\_

PO# \_\_\_\_\_

Requested Ship Date \_\_\_\_\_

Opening Order       Reorder

Business Name \_\_\_\_\_

Bill to Address \_\_\_\_\_

\_\_\_\_\_

\_\_\_\_\_

Telephone \_\_\_\_\_

Facsimile \_\_\_\_\_

E-mail \_\_\_\_\_

Ship to Address (no drop shipments) \_\_\_\_\_

\_\_\_\_\_

\_\_\_\_\_

Residential Delivery  Yes  No

Truck Shipments Accepted  Yes  No

Ship to Telephone \_\_\_\_\_

Card # \_\_\_\_\_

Expiration Date \_\_\_\_\_

Cardholder's Name \_\_\_\_\_

Card Billing Address \_\_\_\_\_

\_\_\_\_\_

\_\_\_\_\_

\_\_\_\_\_

Minimum opening order is \$500 (\$350 for jewelry only); reorder \$300 (\$200 for jewelry only). Items must be ordered in case pack quantities. A New Customer Information Form is required to open an account.

Item #	Quantity	Description	Item Price	Extension

Total \_\_\_\_\_

Special/Shipping Instructions \_\_\_\_\_



200 Gate Five Road, No. 116 Sausalito, California 94965

tel. 415 339 9500 fax. 415 339 9400 www.roostco.com

Date \_\_\_\_\_

Buyer \_\_\_\_\_

Signature \_\_\_\_\_

PO# \_\_\_\_\_

Requested Ship Date \_\_\_\_\_

Opening Order     Reorder \_\_\_\_\_

Business Name \_\_\_\_\_

Bill to Address \_\_\_\_\_

\_\_\_\_\_

\_\_\_\_\_

Telephone \_\_\_\_\_

Facsimile \_\_\_\_\_

E-mail \_\_\_\_\_

Ship to Address (no drop shipments) \_\_\_\_\_

\_\_\_\_\_

\_\_\_\_\_

Residential Delivery  Yes     No \_\_\_\_\_

Truck Shipments Accepted  Yes     No \_\_\_\_\_

Ship to Telephone \_\_\_\_\_

Card # \_\_\_\_\_

Expiration Date \_\_\_\_\_

Cardholder's Name \_\_\_\_\_

Card Billing Address \_\_\_\_\_

\_\_\_\_\_

\_\_\_\_\_

\_\_\_\_\_

Minimum opening order is \$500 (\$350 for jewelry only); reorder \$300 (\$200 for jewelry only). Items must be ordered in case pack quantities. A New Customer Information Form is required to open an account.

Item #	Quantity	Description	Item Price	Extension

Total \_\_\_\_\_

Special/Shipping Instructions \_\_\_\_\_



## Terms & Conditions

### New Accounts

- An initial order and completed New Customer Information Form are required to open an account.
- All customers must supply Roost with their state sales tax number.
- All customer accounts are subject to approval by Roost.

### Orders

- Minimum opening order is \$500 (\$350 for jewelry only); reorder \$300 (\$200 for jewelry only).
- Orders must be written in case pack quantities (indicated by minimums throughout the catalog). If not, Roost reserves the right to increase quantities to meet case pack requirements. All case pack requirements are per item number.
- Order confirmations will indicate estimated ship dates. Actual ship dates may shift due to changing circumstances and availability. Backorders will be shipped without notice and as available unless otherwise directed by customer.
- All changes to open orders should be submitted in writing.

### Pricing

- Prices in this catalog are valid through June 15, 2016.
- Prices may be subject to change without notice.
- The wholesale prices listed in this catalog apply to stocking retailers only. Trade customers without a physical retail storefront or a catalog operation are subject to a 50% surcharge. Please contact [info@roostco.com](mailto:info@roostco.com) to request a trade price list.

### Payment Terms

- Prepayment of opening orders is required. We accept payment by credit card (Visa, MasterCard and American Express) or company check. Using a credit card will expedite your shipment. If prepaying by check, allow two weeks for check clearance.
- Prepayments must include estimated freight charge.
- A \$20 fee will be charged for any returned checks.
- A \$15 fee will be charged for payments by wire transfer.
- For Net 30 terms, please submit complete trade and bank references. Upon approval, terms will be established for reorders.

### Shipping

- All orders are shipped FOB Vacaville, CA.
- Special routing instructions must be specified or Roost will ship at own discretion. Special handling requests are subject to extra charge.
- Roost will not be responsible for additional charges incurred for inside deliveries.
- International customers are responsible for entry into destination country, including freight forwarder arrangements, customs clearance and all associated broker charges, import duties, customs fees, tariffs and taxes. Shipping and other fees, including storage charges, for orders refused, held or denied entry by customs are the responsibility of the customer.
- Due to the nature of our products, some items will be shipped in oversized cartons, which may result in higher freight costs.
- Roost does not drop ship or ship C.O.D.

### Late Payments

- Late charges of 1.5% per month will be charged to all past due accounts.
- Customer agrees to pay all collection costs and attorney fees.
- Delinquent accounts will be reported to Dun & Bradstreet, Manufacturers Credit Cooperative and other credit bureaus.

### Returns / Claims

- Most Roost product is handcrafted. There may be some slight variation in color, texture and finish. These are not considered flaws.
- Please examine your order upon arrival for any discrepancies. Any shipping damage or loss must be claimed by consignee with carrier. All other claims must be submitted in writing to Customer Service within ten days of receipt.
- No returns will be accepted without a Roost Return Authorization (RA) number. All cartons must be identified with this number. Returns must be received in their original condition at our Vacaville location.
- Returns may be subject to a 20% handling and restocking fee.
- Unauthorized returns and refused shipments will be charged a 20% restocking fee and all freight charges.
- All cancellations must be requested in writing and confirmed by Roost.



Spring Home Issue No.23 is now available. Please contact your sales representative or email [info@roostco.com](mailto:info@roostco.com) to request a copy.

### Roost

200 Gate Five Road, No.116 Sausalito, California 94965  
tel. 415 339 9500 fax. 415 339 9400 [www.roostco.com](http://www.roostco.com)

### Contact Information

New accounts, new and existing orders, stock availability: [sales@roostco.com](mailto:sales@roostco.com)

Returns, claims, product information: [customerservice@roostco.com](mailto:customerservice@roostco.com)

Catalog requests, price lists, company information: [info@roostco.com](mailto:info@roostco.com)

Press inquiries, image requests: [press@roostco.com](mailto:press@roostco.com)

